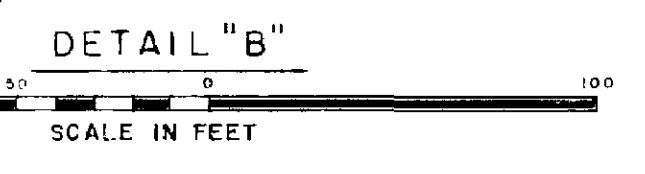
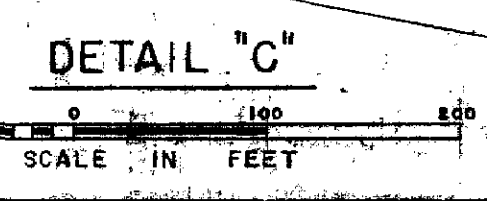


SHEET INDEX



DETAIL "B"
SCALE IN FEET



DETAIL "C"
SCALE IN FEET

(TYPE) MISCELLANEOUS

PROJECT OWNERSHIP MAP

STATE CALIFORNIA
 COUNTY SAN LUIS OBISPO
 DIVISION SOUTH PACIFIC
 DISTRICT LOS ANGELES
 6th ARMY AREA

LOCATION OF PROJECT

6 MILES N. OF SAN LUIS OBISPO
 200 MILES S. OF SAN FRANCISCO

TRANSPORTATION FACILITIES

RAILROADS SOUTHERN PACIFIC
 STATE ROADS STATE HIGHWAY 178
 FEDERAL ROADS U.S. HIGHWAY 101
 AIRLINES

ACQUISITION

TOTAL ACRES ACQUIRED
 ACRES FEE
 ACRES TRANSFER TO WAR DEPT.
 ACRES LEASED TO WAR DEPT.
 ACRES LESSER INTERESTS

DISPOSAL

TOTAL ACRES DISPOSED OF
 ACRES SOLD BY WAR DEPT.
 ACRES TRANSFERRED BY WAR DEPT.
 ACRES RETRANSFERRED TO GOVT. AGENCY
 ACRES LEASES TERMINATED
 ACRES LESSER INT'S TERM.

LEGEND

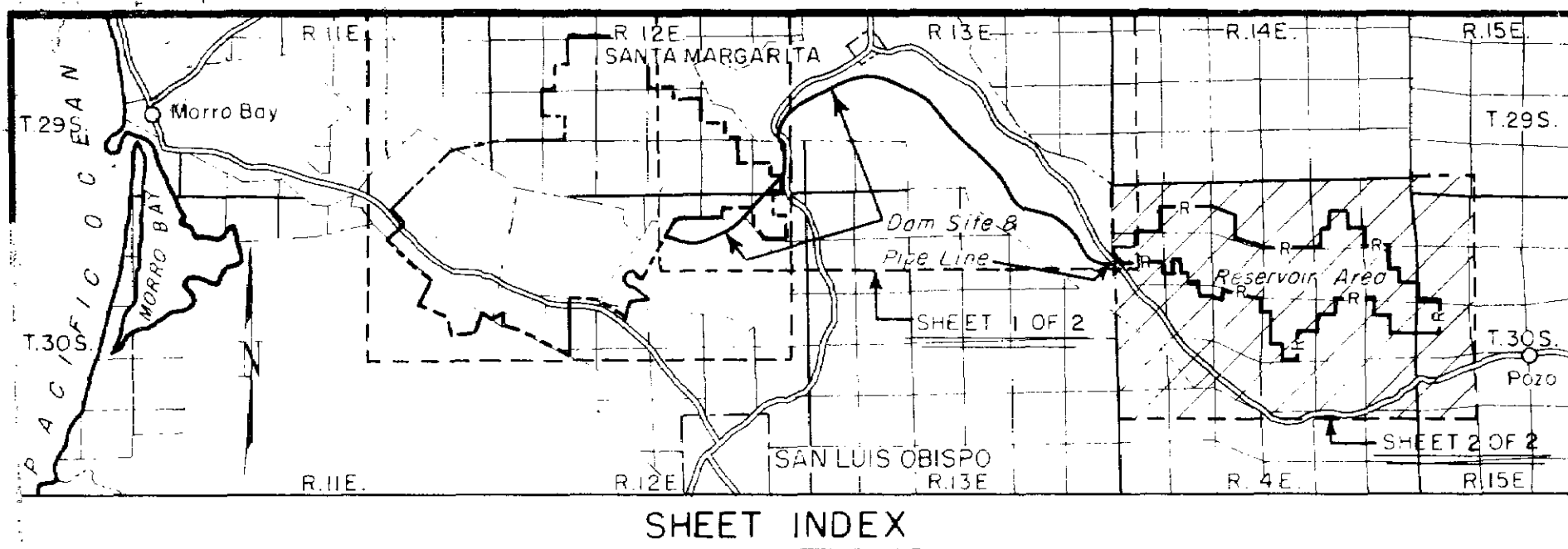
NOTE: USE SYMBOLS FROM FM-27-30 (WAR DEPT. BASIC FIELD MANUAL) PAGES 21 TO 27 INCL.

EXCEPT

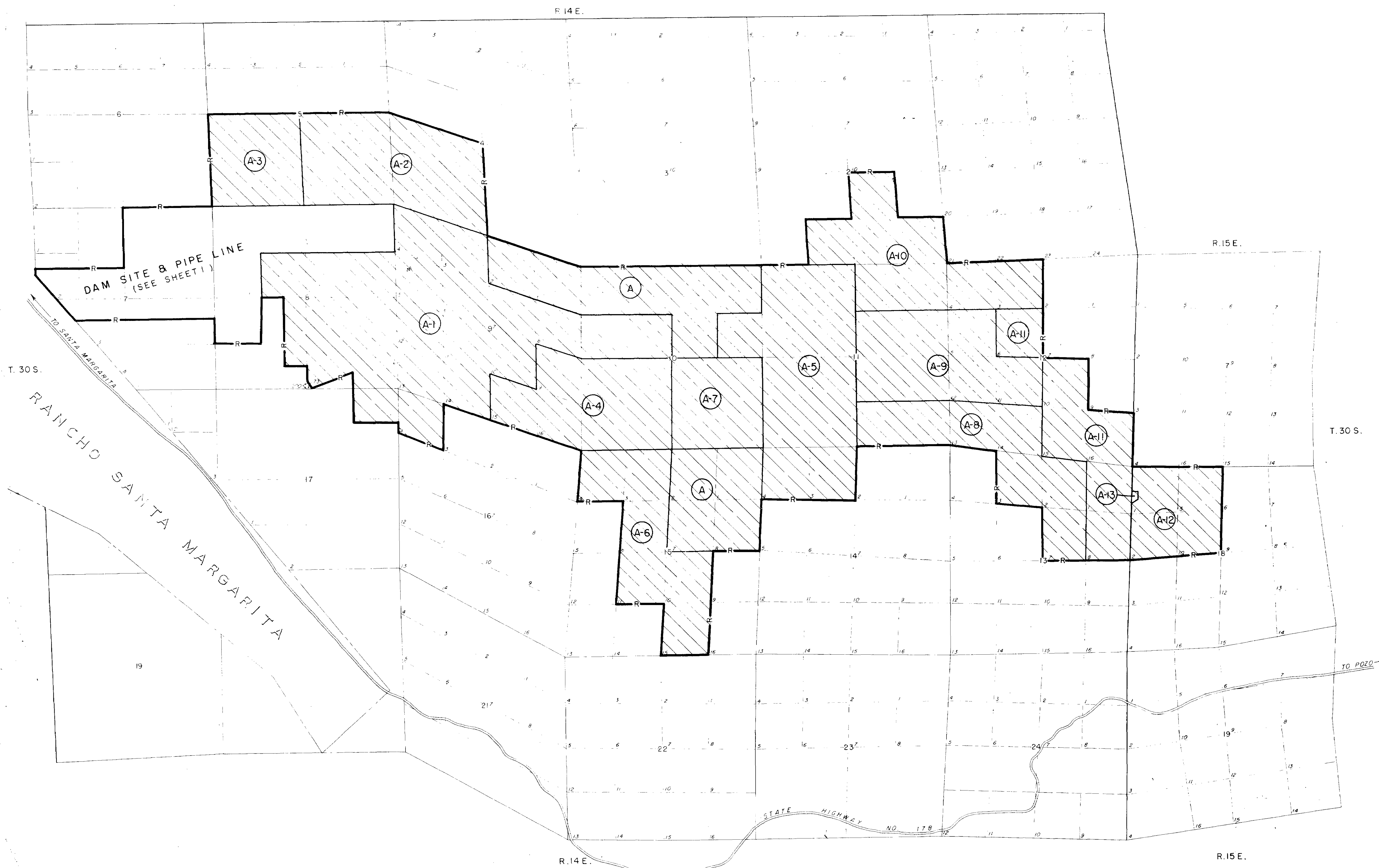
RESERVATION LINE
 RESERVATION LINE (Actual Survey)
 DAM SITE (Taking Line)
 RESERVOIR SITE (Taking Line)
 CONTOUR LINES
 AVIGATION EASEMENTS
 TRACT NUMBER

250.73 AC. FEE; 4.54 AC. PUBLIC DOMAIN BY USE PERMIT; 158.01 AC. EASEMENT (16, INCLUDING 1 NO AREA), PERMITS (2), NO AREA; AND LIC. (1), NO AREA, REPORTED EXCESS TO G.S.A. SF-118 (LA-31), 9 FEB. 1982.

REVISIONS	DATE	BY
CORPS OF ENGINEERS, U.S. ARMY OFFICE OF THE DIVISION ENGINEER SOUTH PACIFIC DIVISION		
REAL ESTATE		
SALINAS DAM AND RESERVOIR		
REPORT OF EXCESS REAL PROPERTY TO GSA		
MILITARY RESERVATION		
DRAWN BY: S.I.W.		DATE: 9 FEB. 1982
TRACED BY: F.D.V.		
CHECKED BY: S.P.		
SUBMITTED BY: <i>Carl Panish</i>		
RECOMMENDED: <i>Carl Panish</i>		
CHIEF, CADASTRAL SEC.		
CHIEF, PLANNING & CONTROL BR.		
OFFICE, CHIEF OF ENGINEERS, WASHINGTON, D. C.		
INSTALLATION OR PROJECT NO.		
SCALE IN FEET		
1000	600	0
1200	200	
SHEET 1 OF 2		DRAWING NUMBER: SF-M-20



SHEET INDEX



(TYPE) MISCELLANEOUS

PROJECT OWNERSHIP MAP

STATE CALIFORNIA
 COUNTY SAN LUIS OBISPO
 DIVISION SOUTH PACIFIC
 DISTRICT LOS ANGELES
 6th ARMY AREA

LOCATION OF PROJECT

10 MILES N.E. OF SAN LUIS OBISPO
 200 MILES S. OF SAN FRANCISCO

TRANSPORTATION FACILITIES

RAILROADS SOUTHERN PACIFIC
 STATE ROADS STATE HIGHWAY 178
 FEDERAL ROADS U.S. HIGHWAY 101
 AIRLINES

ACQUISITION

TOTAL ACRES ACQUIRED
 ACRES FEE
 ACRES TRANSF'R TO WAR DEPT.
 ACRES LEASED TO WAR DEPT.
 ACRES LESSER INTERESTS

DISPOSAL

TOTAL ACRES DISPOSED OF
 ACRES SOLD BY WAR DEPT.
 ACRES TRANSF'D BY WAR DEPT.
 ACRES RETRANSF'D TO GOVT. AGCY.
 ACRES LEASES TERMINATED
 ACRES LESSER INT'S TERM.

LEGEND

NOTE: USE SYMBOLS FROM FM-21-30 (WAR DEPT. BASIC FIELD MANUAL) PAGES 21 TO 27 INCL.

- EXCEPT
- RESERVATION LINE
 - RESERVATION LINE (Actual Survey)
 - DAM SITE (Taking Line)
 - RESERVOIR SITE (Taking Line)
 - CONTOUR LINES
 - AVIGATION EASEMENTS
 - TRACT NUMBER

M.D.B.&M.

REVISIONS	DATE	BY
CORPS OF ENGINEERS, U.S. ARMY OFFICE OF THE DIVISION ENGINEER SOUTH PACIFIC DIVISION		
REAL ESTATE		
SALINAS DAM AND RESERVOIR REPORT OF EXCESS REAL PROPERTY TO GSA MILITARY RESERVATION		
DRAWN BY: <i>CLW</i> TRACED BY: <i>F.D.V.</i> CHECKED BY: <i>S.P.</i> SUBMITTED BY: <i>Carl J. Parvash</i> CHIEF, CADASTRAL SEC.	RECOMMENDED BY: <i>John B. ...</i> CHIEF PLANNING & CONTROL BR. OFFICE, CHIEF OF ENGINEERS, WASHINGTON, D. C.	APPROVED BY: <i>[Signature]</i> CHIEF, REAL ESTATE DIVISION DATE: 2 FEB. 1982
INSTALLATION OR PROJECT NO.		SCALE IN MILES SHEET 2 OF 5 DRAWING NO. 537-M-20

MISCELLANEOUS

PROJECT MAP

DEPT. OF THE ARMY

USING SERVICE

LOCATION OF PROJECT

STATE CALIFORNIA

COUNTY SAN LUIS OBISPO

DIVISION SOUTH PACIFIC

DISTRICT LOS ANGELES

ARMY AREA SIXTH

6 MILES N. OF SAN LUIS OBISPO

200 MILES S. OF SAN FRANCISCO

TRANSPORTATION FACILITIES

RAILROADS SOUTHERN PACIFIC

STATE ROADS

FEDERAL ROADS U.S. HIGHWAY 101

AIR LINES

ACQUISITION

TOTAL ACRES ACQUIRED

FEE

PUBLIC DOMAIN WITHDRAWAL

USE PERMIT

USE PERMIT (OTHER THAN P. D.)

TRANSFER

LEASE

LESSER INTERESTS

DISPOSAL

TOTAL ACRES DISPOSED OF

SOLD

PUBLIC DOMAIN WITHDRAWAL

USE PERMIT

USE PERMIT (OTHER THAN P. D.)

TRANSFERRED

LEASES TERMINATED

LESSER INTERESTS TERM.

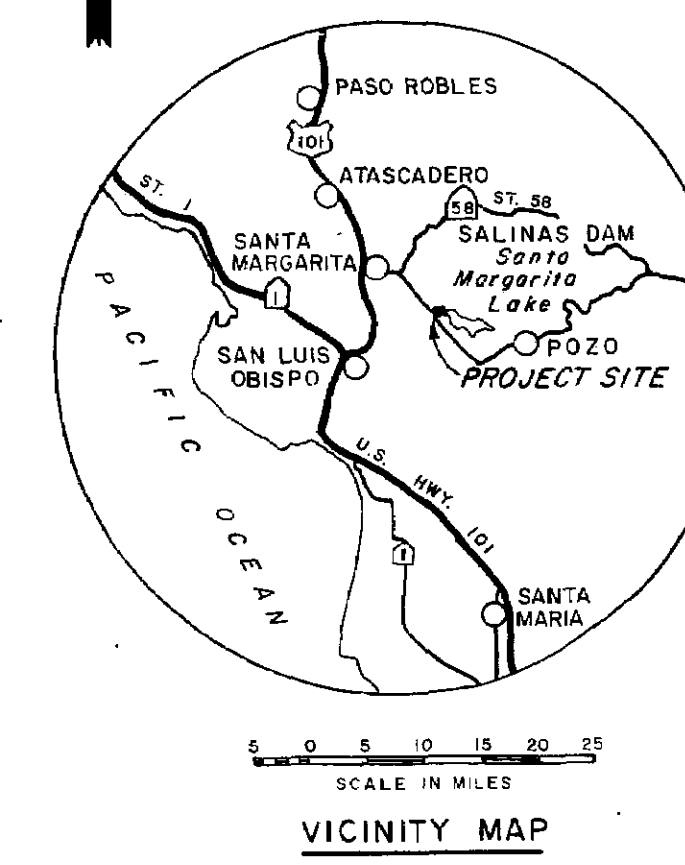
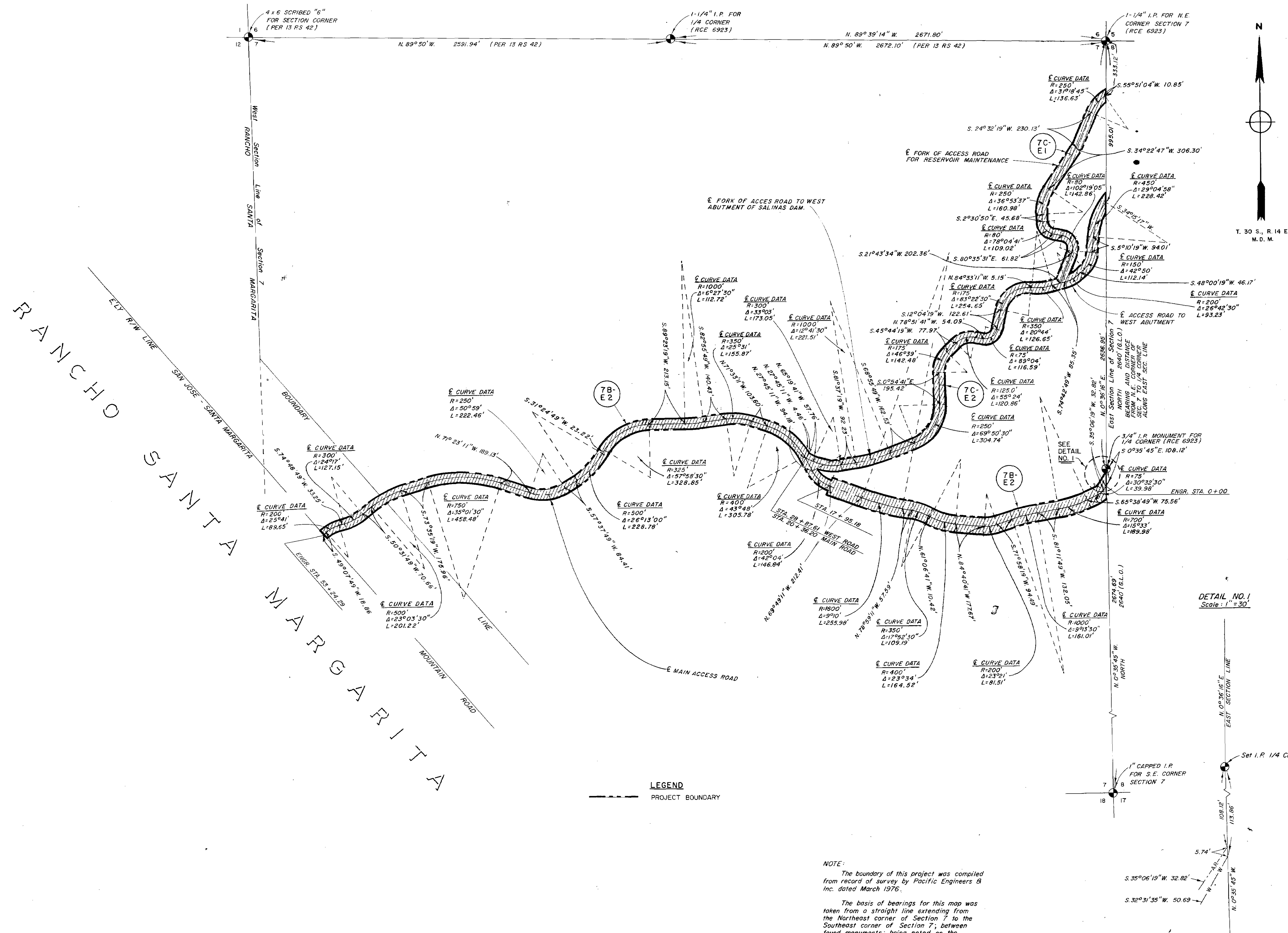
REASSIGNED

OTHER

LEGEND

EXCEPT FOR THE SPECIAL SYMBOLS SHOWN BELOW MAP SYMBOLS ARE STANDARD IN ARMY MAP SERVICE TECHNICAL MANUAL NO. 23.

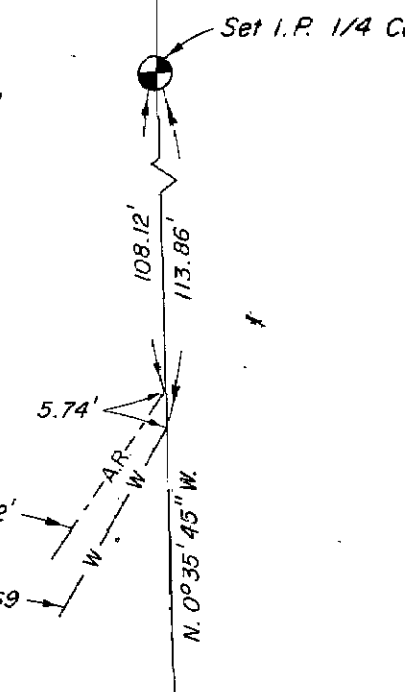
- RESERVATION LINE
RESERVATION LINE (Actual Survey)
TRACT BOUNDARY LINE
TRACT NUMBER
CONTOUR LINE
DISPOSAL
EXTENDED OWNERSHIP LINE



LEGEND
PROJECT BOUNDARY

NOTE: The boundary of this project was compiled from record of survey by Pacific Engineers & Inc. dated March 1976. The basis of bearings for this map was taken from a straight line extending from the Northeast corner of Section 7 to the Southeast corner of Section 7; between found monuments; being noted on the government field notes as being due North.

DETAIL NO. 1
Scale: 1" = 30'



49.26 AC. EASEMENT (7) REPORTED EXCESS TO GSA, SF-118 (LA-131), 9 FEB 1982.

DEPARTMENT OF THE ARMY
OFFICE OF THE LOS ANGELES DISTRICT ENGINEER
SOUTH PACIFIC DIVISION
REAL ESTATE
SALINAS DAM AND RESERVOIR
MAIN ROAD AND FORK ROADS
APPROVED BY: [Signature]
DATE 9 FEB 1982
SCALE IN FEET
SHEET 3 OF 5
DRAWING NO. 537-N-20

Table with columns: DATE, REVISIONS, BY

MISCELLANEOUS

PROJECT MAP

DEPT. OF THE ARMY

USING SERVICE

LOCATION OF PROJECT

STATE CALIFORNIA
 COUNTY SAN LUIS OBISPO
 DIVISION SOUTH PACIFIC
 DISTRICT LOS ANGELES
 ARMY AREA SIXTH
 6 MILES N. OF SAN LUIS OBISPO
 200 MILES S. OF SAN FRANCISCO

TRANSPORTATION FACILITIES

RAILROADS SOUTHERN PACIFIC
 STATE ROADS
 FEDERAL ROADS U. S. HIGHWAY 101
 AIR LINES

ACQUISITION

TOTAL ACRES ACQUIRED

FEE
 PUBLIC DOMAIN WITHDRAWAL
 USE PERMIT
 USE PERMIT (OTHER THAN P. D.)
 TRANSFER

LEASE

DISPOSAL

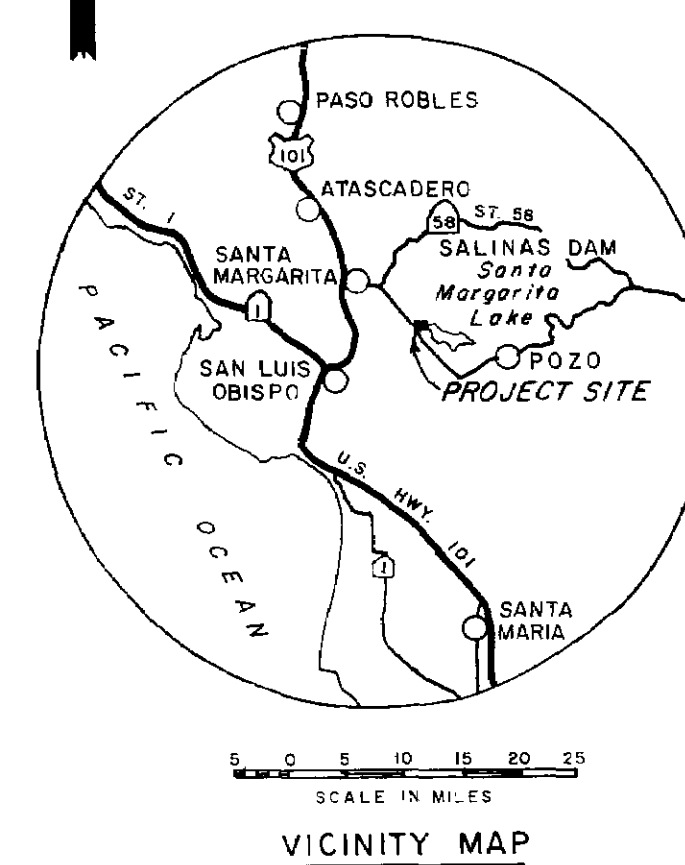
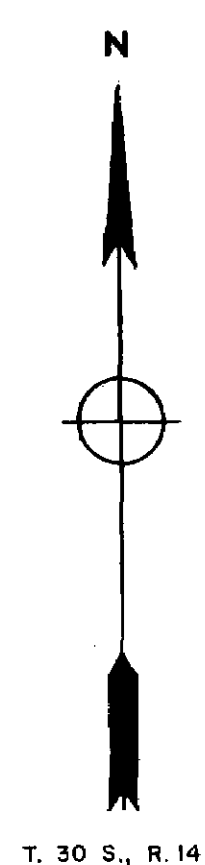
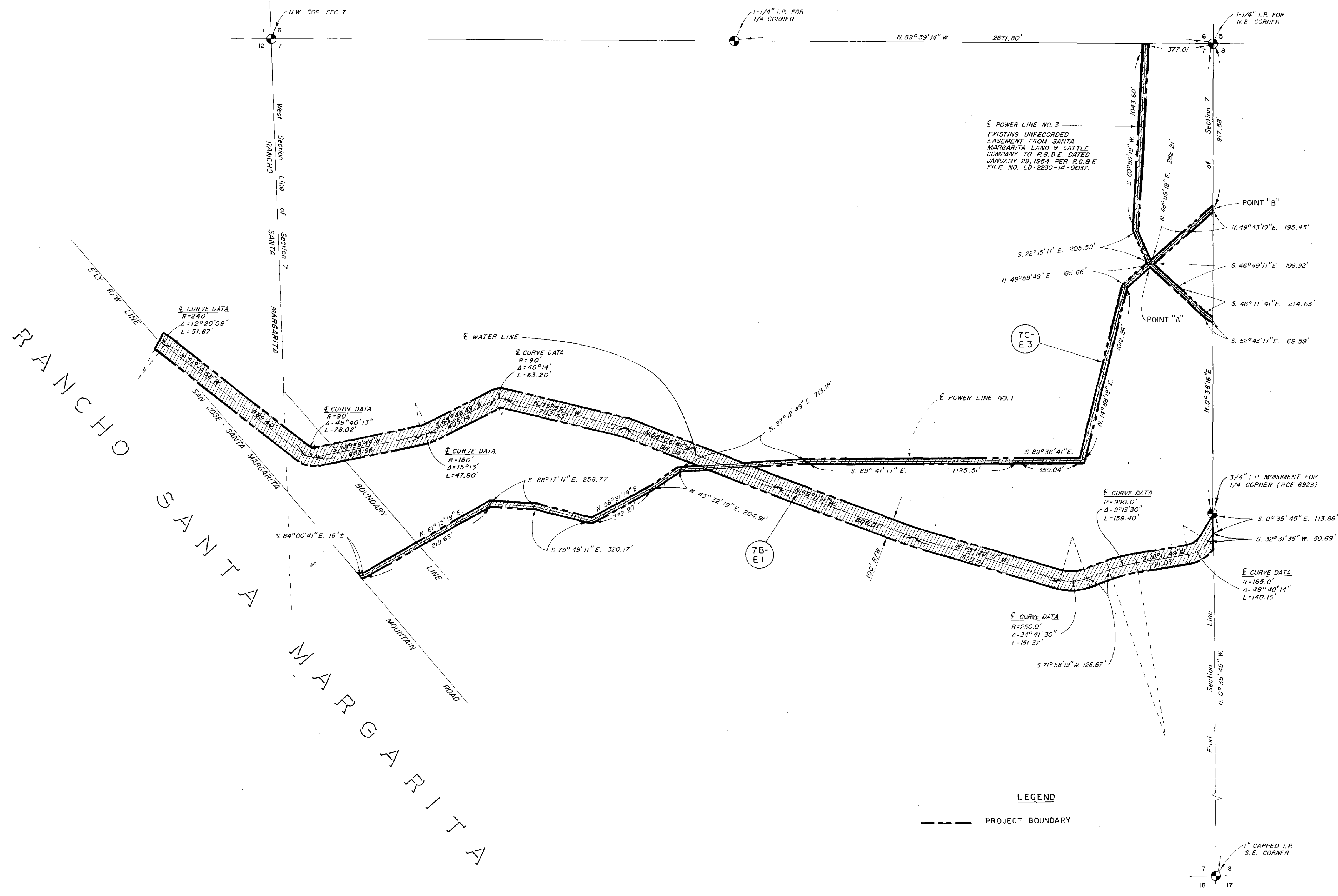
TOTAL ACRES DISPOSED OF

SOLD
 PUBLIC DOMAIN WITHDRAWAL
 USE PERMIT
 USE PERMIT (OTHER THAN P. D.)
 TRANSFERRED
 LEASES TERMINATED
 LESSER INTERESTS TERM.
 REASSIGNED
 OTHER

LEGEND

EXCEPT FOR THE SPECIAL SYMBOLS SHOWN BELOW MAP SYMBOLS ARE STANDARD IN ARMY MAP SERVICE TECHNICAL MANUAL NO. 23.

- RESERVATION LINE
- RESERVATION LINE (Actual Survey)
- TRACT BOUNDARY LINE
- TRACT NUMBER
- CONTOUR LINE
- DISPOSAL
- EXTENDED OWNERSHIP LINE



LEGEND

PROJECT BOUNDARY

DEPARTMENT OF THE ARMY
 OFFICE OF THE LOS ANGELES DISTRICT ENGINEER
 SOUTH PACIFIC DIVISION

REAL ESTATE
SALINAS DAM AND RESERVOIR
 POWER LINE AND WATER LINE

DRAWN BY: B.M.H. Y.C.L.
 TRACED BY:
 CHECKED BY: T.S. X.E.P.
 SUBMITTED BY: *Carl P. Pons*
 CHIEF, CAESTRAL SECTION
 RECOMMENDED BY: *John R. B...*
 CHIEF, PLANNING & CONTROL BR.
 APPROVED BY: *[Signature]*
 CHIEF, REAL ESTATE DIVISION
 DATE: 9 FEB 1982

OFFICE, CHIEF OF ENGINEERS, WASHINGTON 25, D. C.
 SCALE IN FEET: 0 100 200 300 400
 SHEET 4 OF 5 DRAWING NO. 537-M-20
 INSTALLATION OR PROJECT NO.

DATE	REVISIONS	BY

MISCELLANEOUS
PROJECT MAP

DEPT. OF THE ARMY
USING SERVICE
LOCATION OF PROJECT
STATE CALIFORNIA
COUNTY SAN LUIS OBISPO
DIVISION SOUTH PACIFIC
DISTRICT LOS ANGELES
ARMY AREA SIXTH
6 MILES N. OF SAN LUIS OBISPO
200 MILES S. OF SAN FRANCISCO

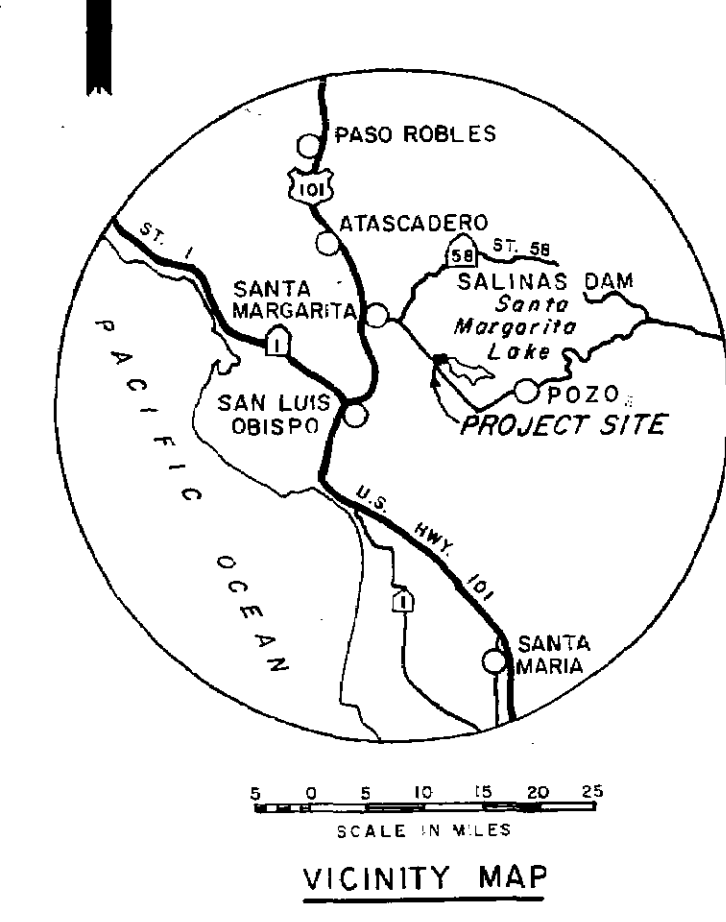
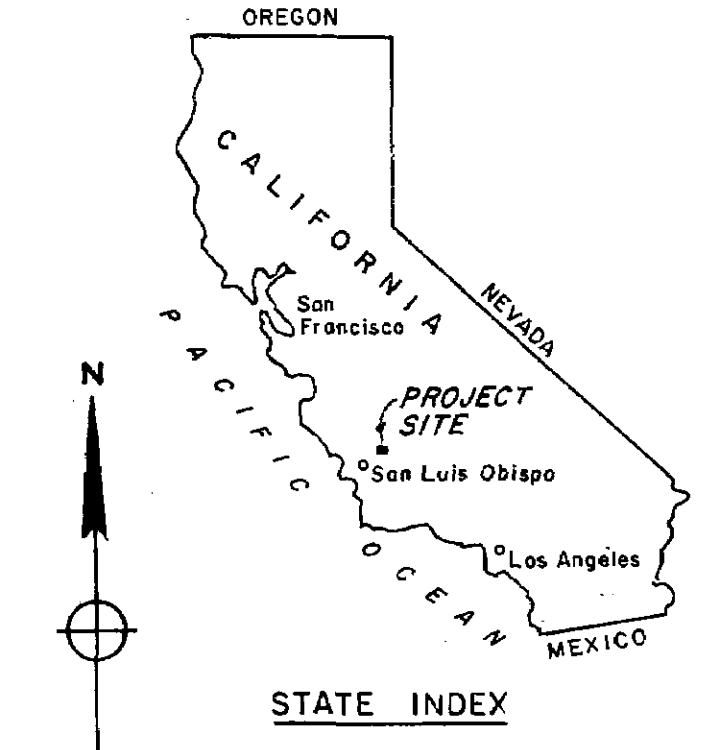
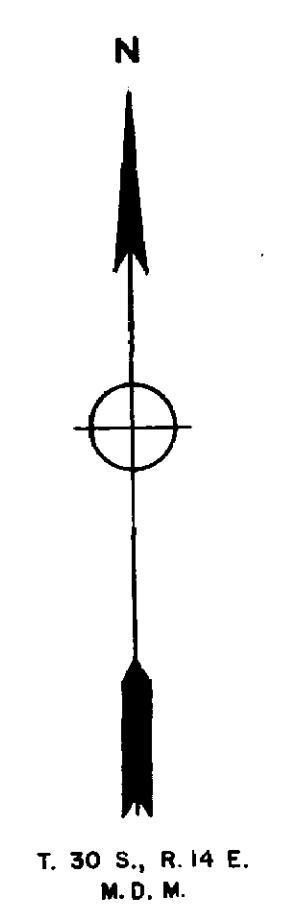
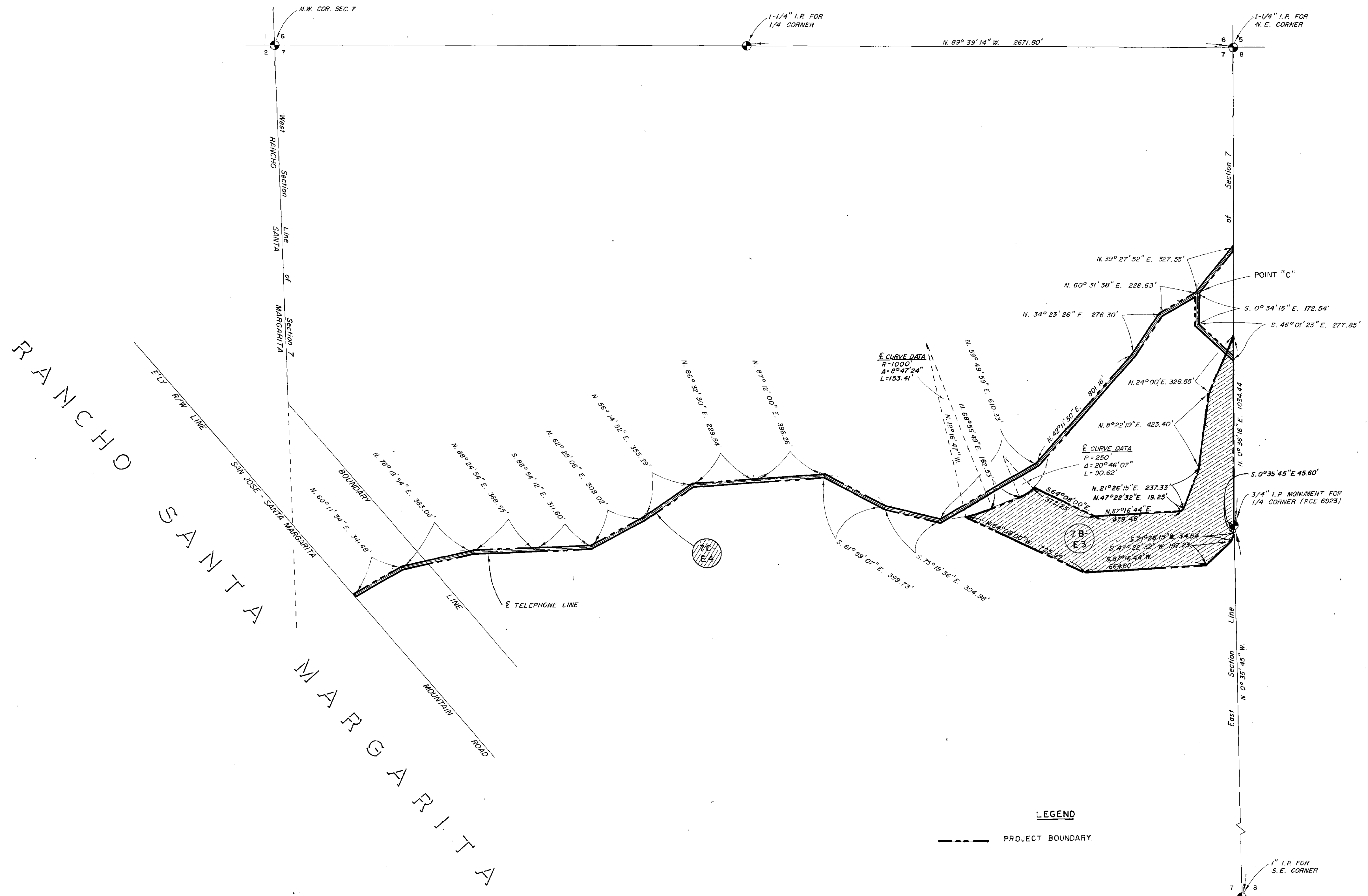
TRANSPORTATION FACILITIES
RAILROADS SOUTHERN PACIFIC
STATE ROADS
FEDERAL ROADS U. S. HIGHWAY 101
AIR LINES

ACQUISITION
TOTAL ACRES ACQUIRED
FEE
PUBLIC DOMAIN WITHDRAWAL
USE PERMIT
USE PERMIT (OTHER THAN P. D.)
TRANSFER
LEASE
LESSER INTERESTS

DISPOSAL
TOTAL ACRES DISPOSED OF
SOLD
PUBLIC DOMAIN WITHDRAWAL
USE PERMIT
USE PERMIT (OTHER THAN P. D.)
TRANSFERRED
LEASES TERMINATED
LESSER INTERESTS TERM.
REASSIGNED
OTHER

LEGEND
EXCEPT FOR THE SPECIAL SYMBOLS SHOWN BELOW MAP SYMBOLS ARE STANDARD IN ARMY MAP SERVICE TECHNICAL MANUAL NO. 23.

RESERVATION LINE	
RESERVATION LINE (Actual Survey)	
TRACT BOUNDARY LINE	
TRACT NUMBER	
CONTOUR LINE	
DISPOSAL	
EXTENDED OWNERSHIP LINE	



LEGEND
PROJECT BOUNDARY

DATE	REVISIONS	BY

DEPARTMENT OF THE ARMY
OFFICE OF THE LOS ANGELES DISTRICT ENGINEER
SOUTH PACIFIC DIVISION

REAL ESTATE
SALINAS DAM AND RESERVOIR
TELEPHONE LINE AND CLEARING EASEMENT

DRAWN BY: B.M.H. x.c.l.
TRACED BY:
CHECKED BY: T.S. x.e.p.
SUBMITTED BY:
RECOMMENDED BY:
APPROVED BY: [Signature]
DATE: 9 FEB 1982

OFFICE, CHIEF OF ENGINEERS, WASHINGTON 25, D. C.

SCALE IN FEET
300 200 100 0 300 600

SHEET 5 OF 5 DRAWING NO. 537-M-20