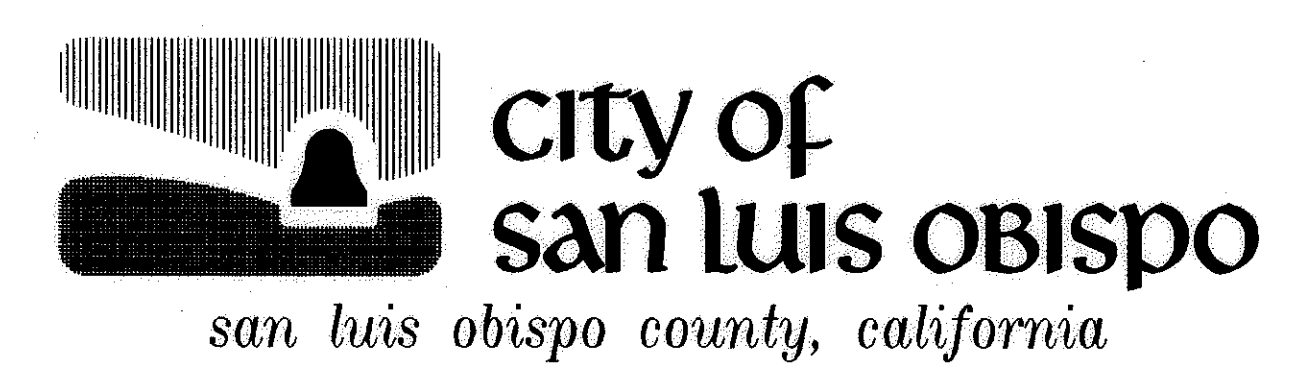
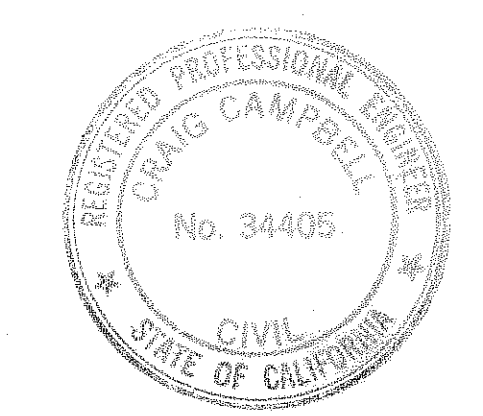


index to plans

sheet no.	description
1.....	Cover Sheet
2.....	Plan & Profile (sta 10+00 to 10+80)
3.....	Plan & Profile (sta 10+80 to 12+20)



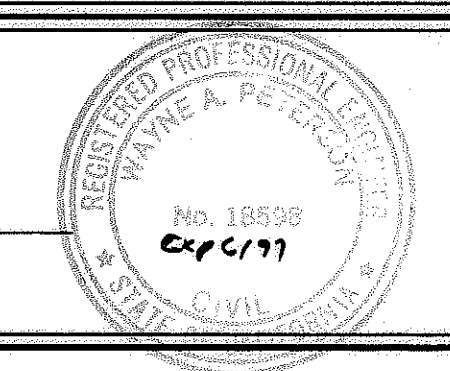
Flora St. / El Cerrito St. Storm Drain Project



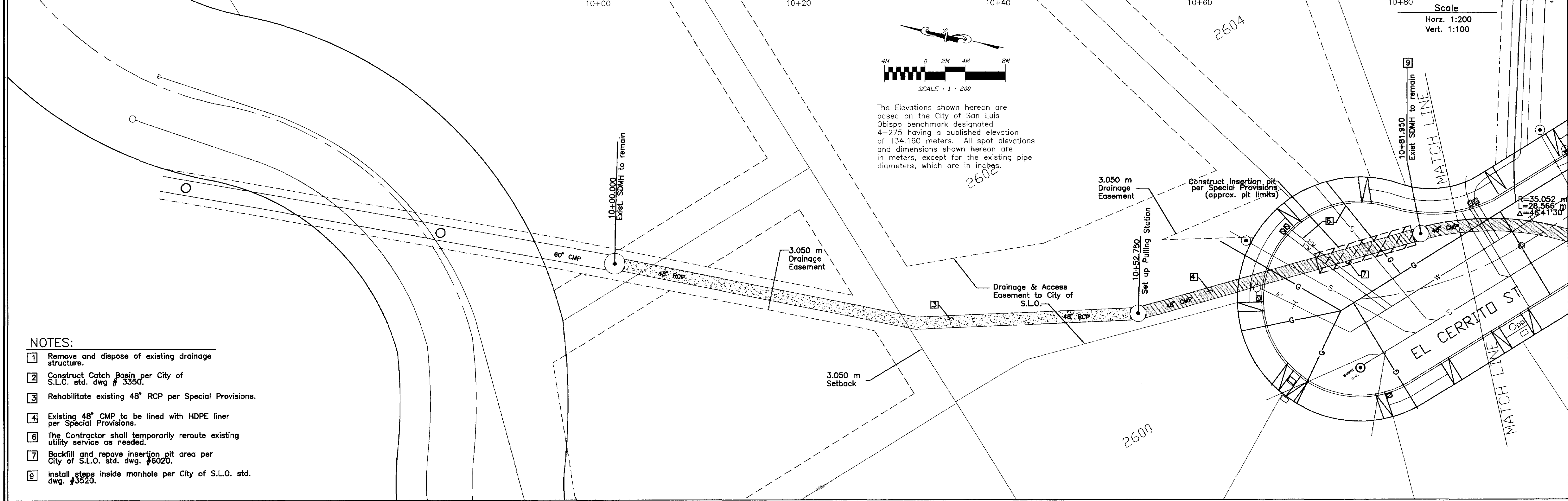
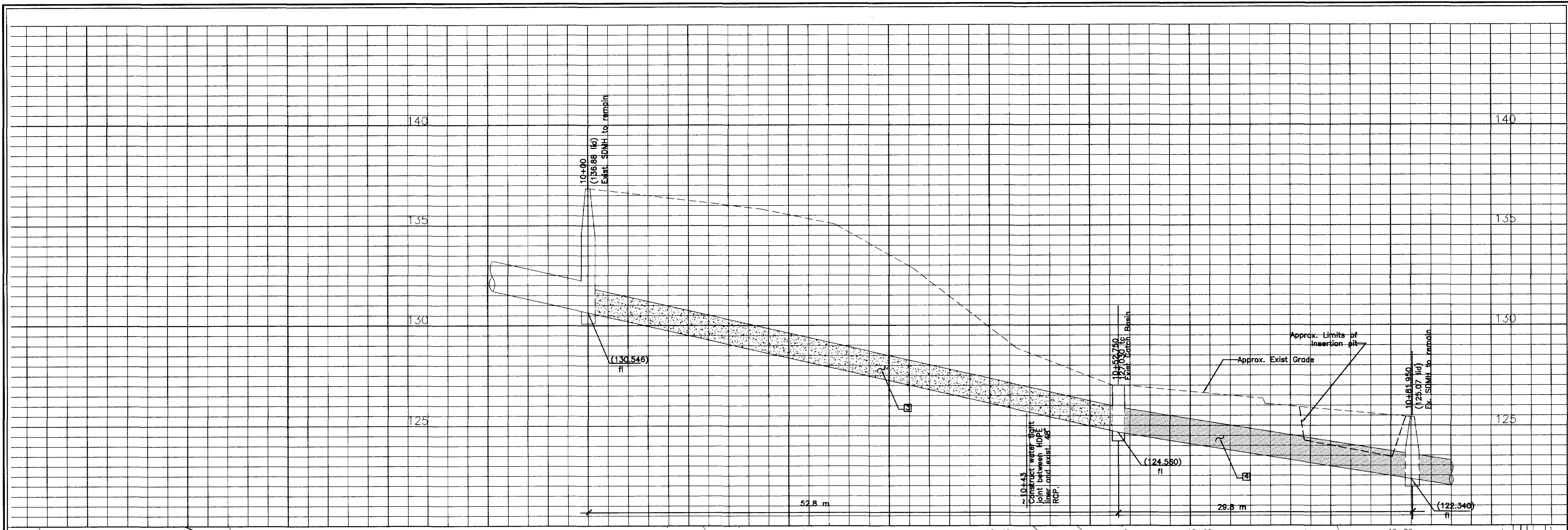
Craig Campbell 8-13-96
 Craig Campbell R.C.E. 34405

96-05E

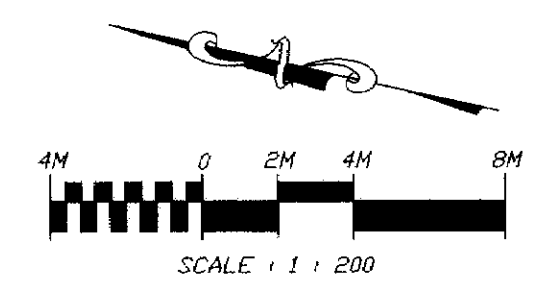
Wayne A. Peffer
 City Engineer



DATE	7-24-96
FILE NO./LOCATION	
SHEET	1 OF 3



- NOTES:**
- 1 Remove and dispose of existing drainage structure.
 - 2 Construct Catch Basin per City of S.L.O. std. dwg # 3350.
 - 3 Rehabilitate existing 48" RCP per Special Provisions.
 - 4 Existing 48" CMP to be lined with HDPE liner per Special Provisions.
 - 6 The Contractor shall temporarily reroute existing utility service as needed.
 - 7 Backfill and repave insertion pit area per City of S.L.O. std. dwg. #6020.
 - 9 Install steps inside manhole per City of S.L.O. std. dwg. #3520.

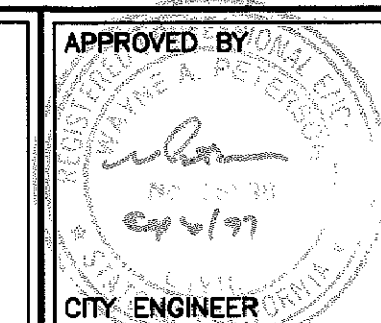


The Elevations shown hereon are based on the City of San Luis Obispo benchmark designated 4-275 having a published elevation of 134.160 meters. All spot elevations and dimensions shown hereon are in meters, except for the existing pipe diameters, which are in inches.

Scale
Horz. 1:200
Vert. 1:100



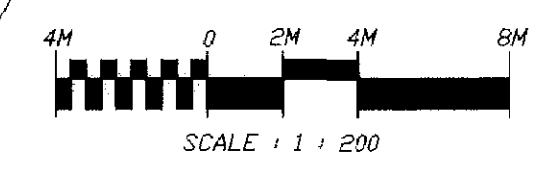
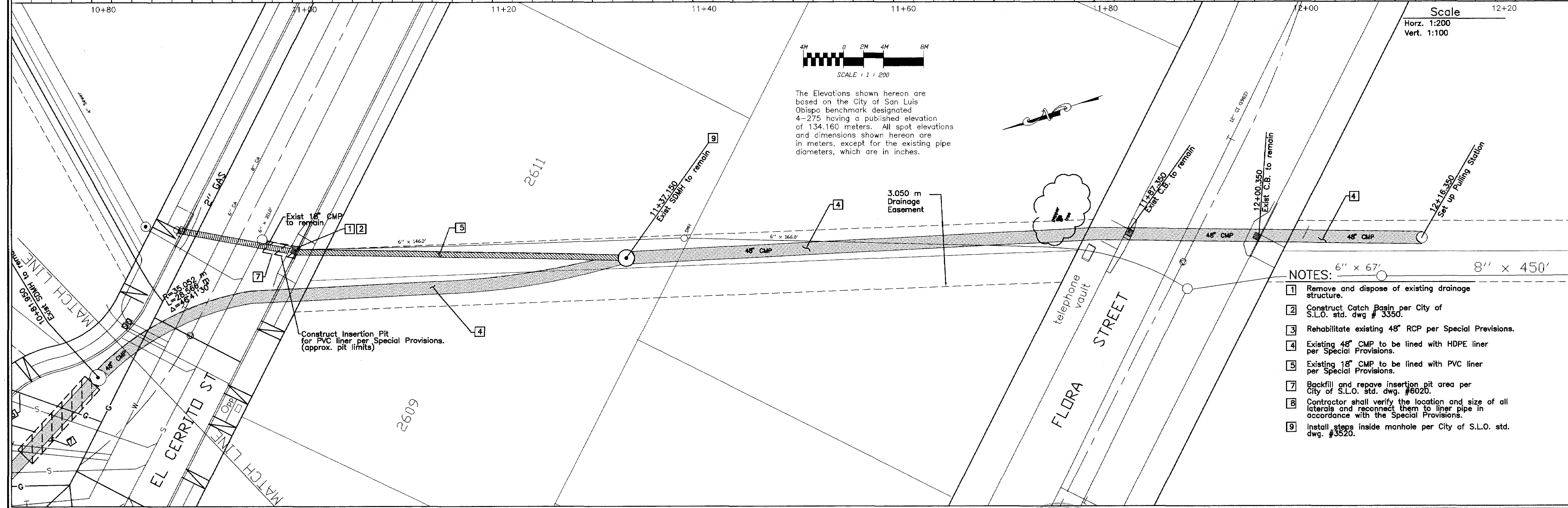
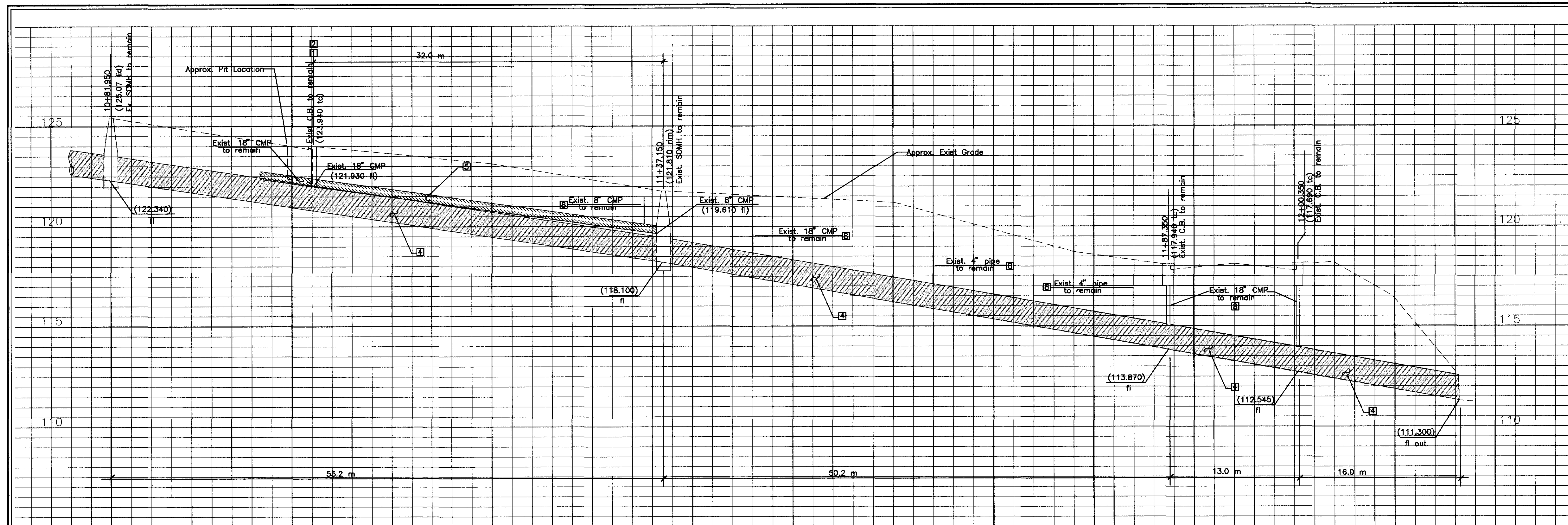
Plan & Profile (STA 10+00 TO 10+80)
Flora St. / El Cerrito St.
Strom Drain Project



DATE	7-24-96
SCALE	1:200
DESIGNED BY	RSV
DRAWN BY	CD
CHECKED BY	CC
APPROVED BY	
UTILITIES DEPARTMENT	

JOHN L WALLACE & ASSOCIATES
 Consulting Civil Engineers
 4115 So. Broad St B5 San Luis Obispo, Ca
 (805)544-4011 FAX 544-4294

SPECIFICATION NO.	96-05E
FILE NO./LOCATION	
SHEET	2 OF 3



The Elevations shown here are based on the City of San Luis Obispo benchmark designated 4-275 having a published elevation of 134.160 meters. All spot elevations and dimensions shown here are in meters, except for the existing pipe diameters, which are in inches.

Scale
Horz. 1:200
Vert. 1:100

- NOTES:
- 1 Remove and dispose of existing drainage structure.
 - 2 Construct Catch Basin per City of S.L.O. std. dwg # 3350.
 - 3 Rehabilitate existing 48" RCP per Special Provisions.
 - 4 Existing 48" CMP to be lined with HDPE liner per Special Provisions.
 - 5 Existing 18" CMP to be lined with PVC liner per Special Provisions.
 - 7 Backfill and repave insertion pit area per City of S.L.O. std. dwg. #6020.
 - 8 Contractor shall verify the location and size of all laterals and reconnect them to liner pipe in accordance with the Special Provisions.
 - 9 Install steps inside manhole per City of S.L.O. std. dwg. #3520.

GIVE TO RICHARD FISHER WITH EXTRA WORK ON MONDAY AND TUESDAY 4-7-4-8

GREEN LINE UNDERGROUND VIDEO SALINAS MADONNA CONST FLORA - EL CERRITO ST SAN LUIS OBISPO TAPE # 1

AS BUILTS ON WEAP HOLES IN 48" RCP

LOG REPORT
03-25-97

MEASUREMENTS ARE FROM CENTER OF DI ON DOWNSTREAM SIDE WALKING UP STREAM

STREET : EL CERRITO
DATE : 3/25/97
OPERATOR : DAVID PHILLIPS
REACH # :
STORM SEWER
CAM START : 0'
HEADING : DOWNSTREAM
RUN # : 1

RIGHT 4.20
LEFT 15.00
RIGHT 28.10
RIGHT 52.30
LEFT 63.60
RIGHT 75.00

FROM THE MH AT STATION 10+00 TO THE MH AT STATION 10+52.750
PIPE TYPE : RCP
PIPE SIZE : 48"
LENGTH :
DEPTH :
FLOW RATE :

FOOTAGE:	TIME OF DAY:	FAULT OR COMMENTS:
41.2 Ft	11:19AM	INFILTRATION INFLOW
50.2 Ft	11:19AM	INFILTRATION INFLOW
90.2 Ft	11:20AM	INFILTRATION INFLOW
99.9 Ft	11:21AM	INFILTRATION INFLOW
107.4 Ft	11:21AM	INFILTRATION INFLOW
117.0 Ft	11:22AM	INFILTRATION INFLOW
124.2 Ft	11:23AM	INFILTRATION INFLOW
140.6 Ft	11:23AM	INFILTRATION INFLOW
174.3 Ft	11:25AM	END OF RUN

with City of SCO

El Cerrito

Storm Drain Proj

APR 25 1997
11:25 AM

GIVE TO RICHARD
FISHER

GREEN LINE UNDERGROUND
VIDEO SALINAS
MADONNA CONST
FLORA - EL CERRITO ST
SAN LUIS OBISPO
TAPE # 1

LOG REPORT
03-25-97

STREET : EL CERRITO
DATE : 3/25/97
OPERATOR : DAVID PHILLIPS
REACH # :
STORM SEWER
CAM START : 0'
HEADING : DOWNSTREAM
RUN # : 2

FROM THE MH AT STATION
10+52.750 TO THE MH AT
STATION 10+81.950
PIPE TYPE : HDPE
PIPE SIZE : 42"
LENGTH :
DEPTH :
FLOW RATE :

FOOTAGE:	TIME OF DAY:	FAULT OR COMMENTS:
89.5 Ft	11:30AM	INFILTRATION INFLOW
94.4 Ft	11:31AM	END OF RUN

⊗ DAMAGED PIPE ON 42" HDPE STARTS 24' DOWNSTREAM
OF 1ST 4" LATERAL (FREDS DRAW). WORST AREA IS 7' UPSTREAM
FROM LATERAL AND IS 2.70 HIGH AND 3.70 WIDE. PIPE COMES
BACK TO NORMAL SHAPE 79' UPSTREAM FROM 4" LATERAL (FREDS).
WE DRILLED AN 1 1/2" HOLE AT 12 O'CLOCK AT WORST SPOT AND
FOUND GROUT.

