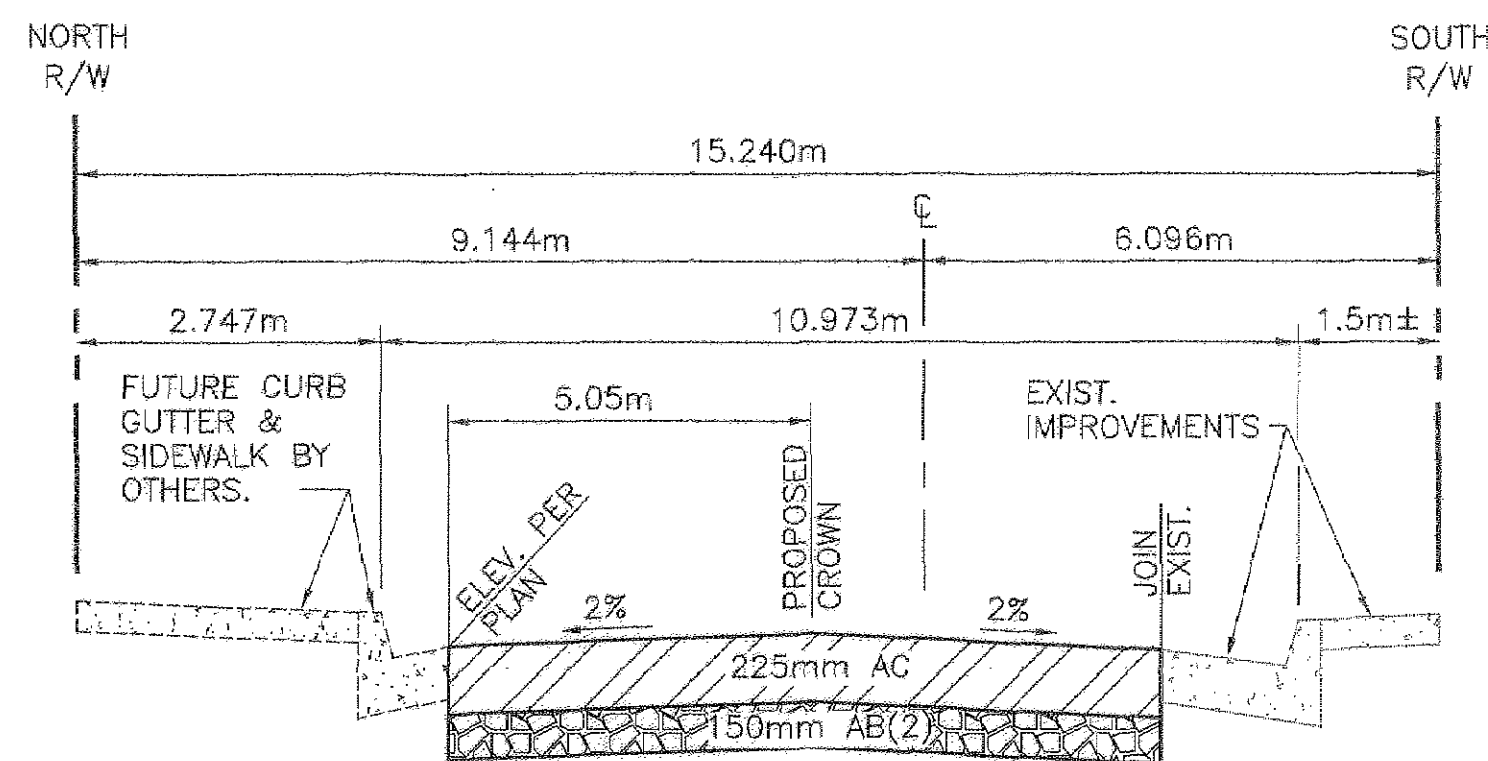


SANTA BARBARA ST. TYPICAL SECTION
NOT TO SCALE



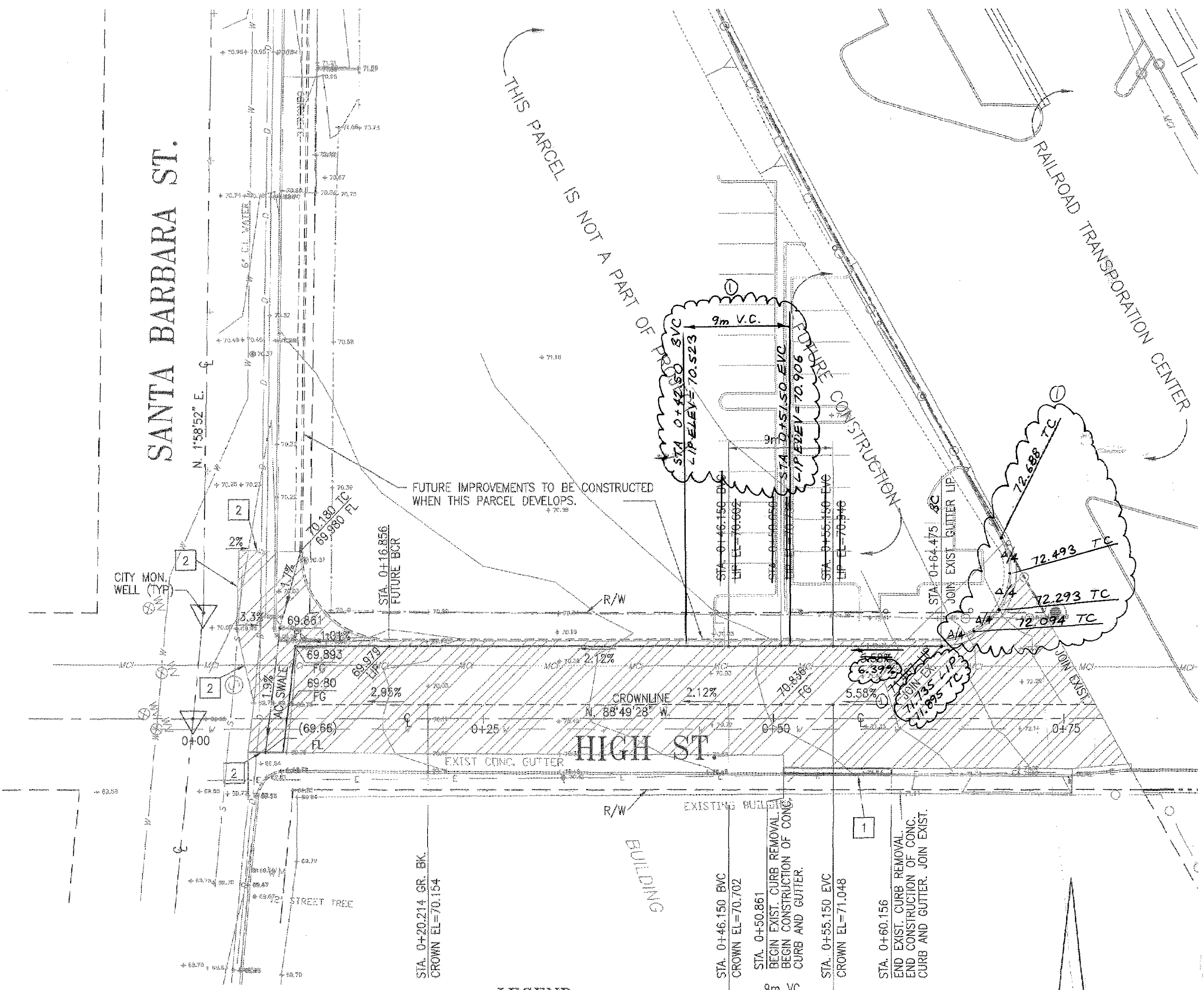
HIGH ST. TYPICAL SECTION
NOT TO SCALE

CONSTRUCTION NOTES

- 1 CONSTRUCT CONC. CURB & GUTTER PER CITY ENGINEERING STD. 4030. (450mm GUTTER WITH 200mm CURB FACE)
- 2 SAWCUT EXIST. AC PVMT. AND JOIN

BENCHMARK

NO. 5-129
ELEV=69.865m
LEAD & TAG AT BCR OF SOUTHEAST CORNER OF HIGH AND SANTA BARBARA.



LEGEND

- EXISTING PAVEMENT, BASE AND CONC. CROSS GUTTER TO BE REMOVED.
- REPLACE STRUCTURAL SECTION FOR HIGH ST. PER TYPICAL SECTION SHOWN HEREON. REPLACE STRUCTURAL SECTION FOR SANTA BARBARA ST. WITH

