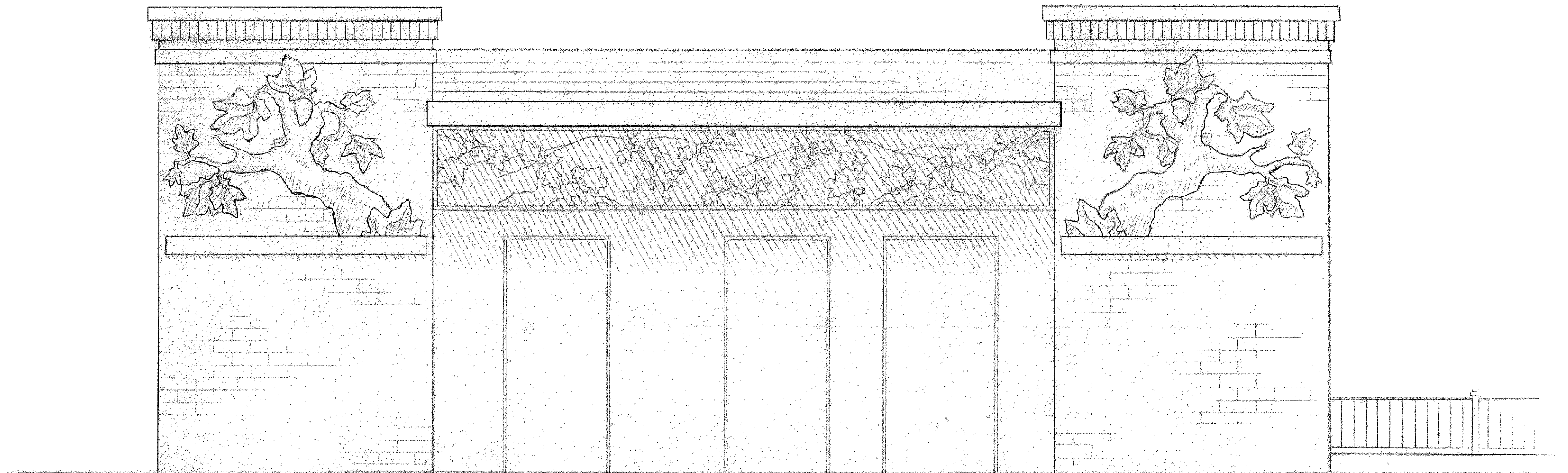




DETAIL OF GRILLE BELOW

SCALE: 1/2" = 1'0"



PUBLIC ART PROPOSAL

(FOR NEW RESTROOM AT PARKING LOT # 2)

SCALE: 1/2" = 1'0"

NOTED: THE COLUMN SCULPTURES ARE HAND WROUGHT BRONZE BAS RELIEF, AND FEATURE NIGHT TIME ILLUMINATION BY WAY OF THE LIGHT BOXES BENEATH THEM.  
THE GRILLE PANELS ARE PAINTED STEEL WITH BRONZE LEAVES & BRANCHES (SEE PROPOSAL LETTER FOR MORE DETAILS).

DRAWN BY: MARK E. JEPSON  
DATE: MARCH 1, 2000  
FOR: SAN LUIS OBISPO  
PUBLIC WORKS DEPT.  
955 MORRO ST  
SLO, CA. 93401