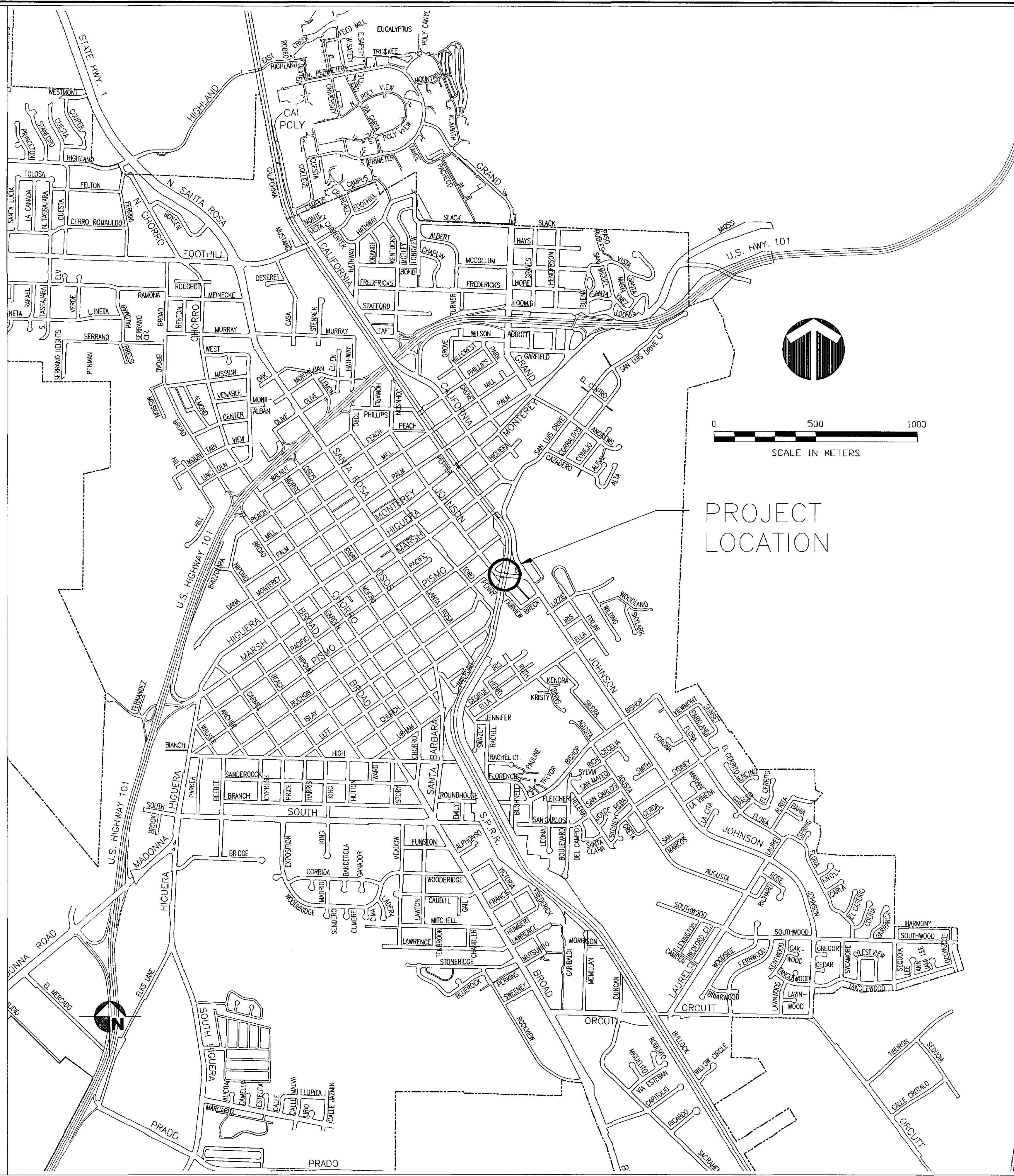


general notes

1. IT SHALL BE THE RESPONSIBILITY OF THE CONTRACTOR OR PERMITEE TO CONTACT "UNDERGROUND SERVICE ALERT U.S.A." TOLL FREE AT 1-800-227-2600 FORTY-EIGHT (48) HOURS PRIOR TO START OF CONSTRUCTION, FOR LOCATION OF POWER, TELEPHONE, OIL AND NATURAL GAS UNDERGROUND FACILITIES. CONTRACTOR OR PERMITEE SHALL ALSO CONTACT THE APPROPRIATE AGENCY FOR THE LOCATION OF CABLE T.V., WATER, SEWER, DRAINAGE OR UNDERGROUND FACILITIES.
2. THE CONTRACTOR SHALL POSSESS A CLASS "A" LICENSE AT THE TIME THE CONTRACT IS AWARDED.



PROJECT LOCATION

index to plans

- Sheet 1 LOCATION MAP & GENERAL NOTES
- Sheet 2 GENERAL PLAN
- Sheet 3 CATCHER BLOCK DETAILS

Reference Documents:
 City Standard Specifications - January 2003 Edition
 City Engineering Standards - January 2003 Edition

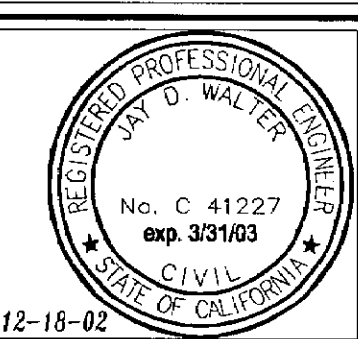


JOHNSON AVENUE
 RAILROAD OVERCROSSING
 SEISMIC RETROFIT

SPECIFICATION NO. 99232B

APPROVED BY

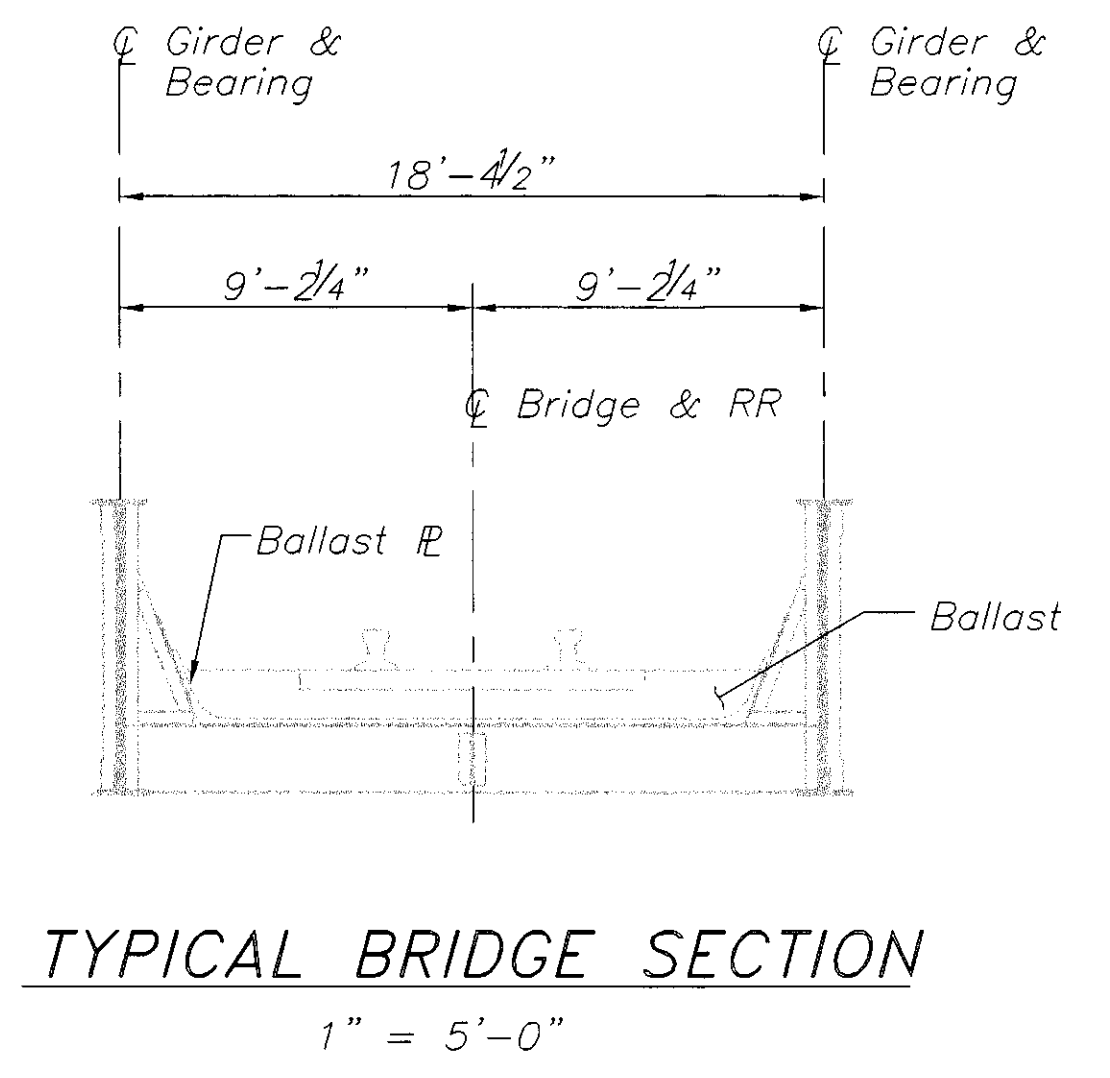
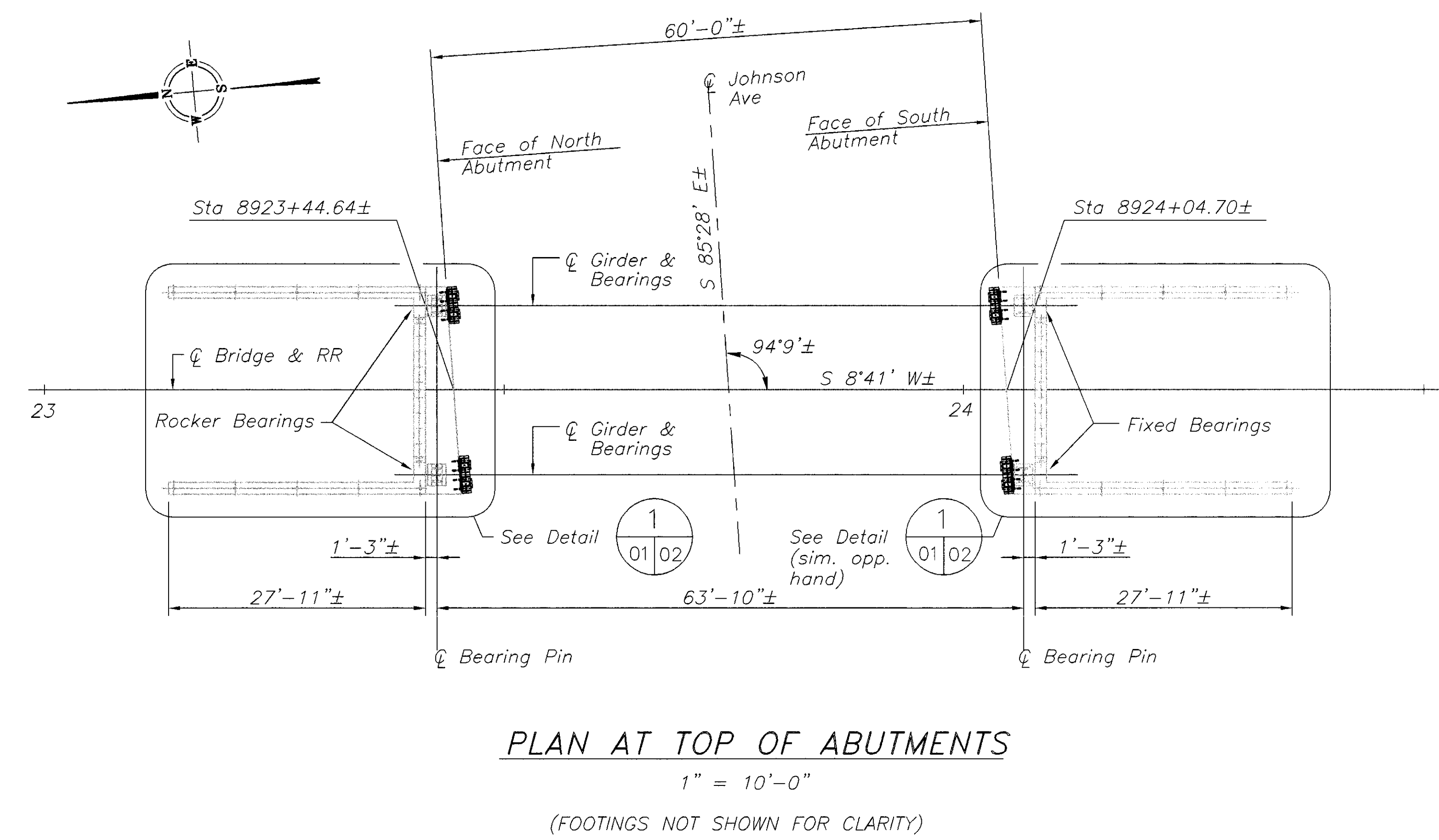
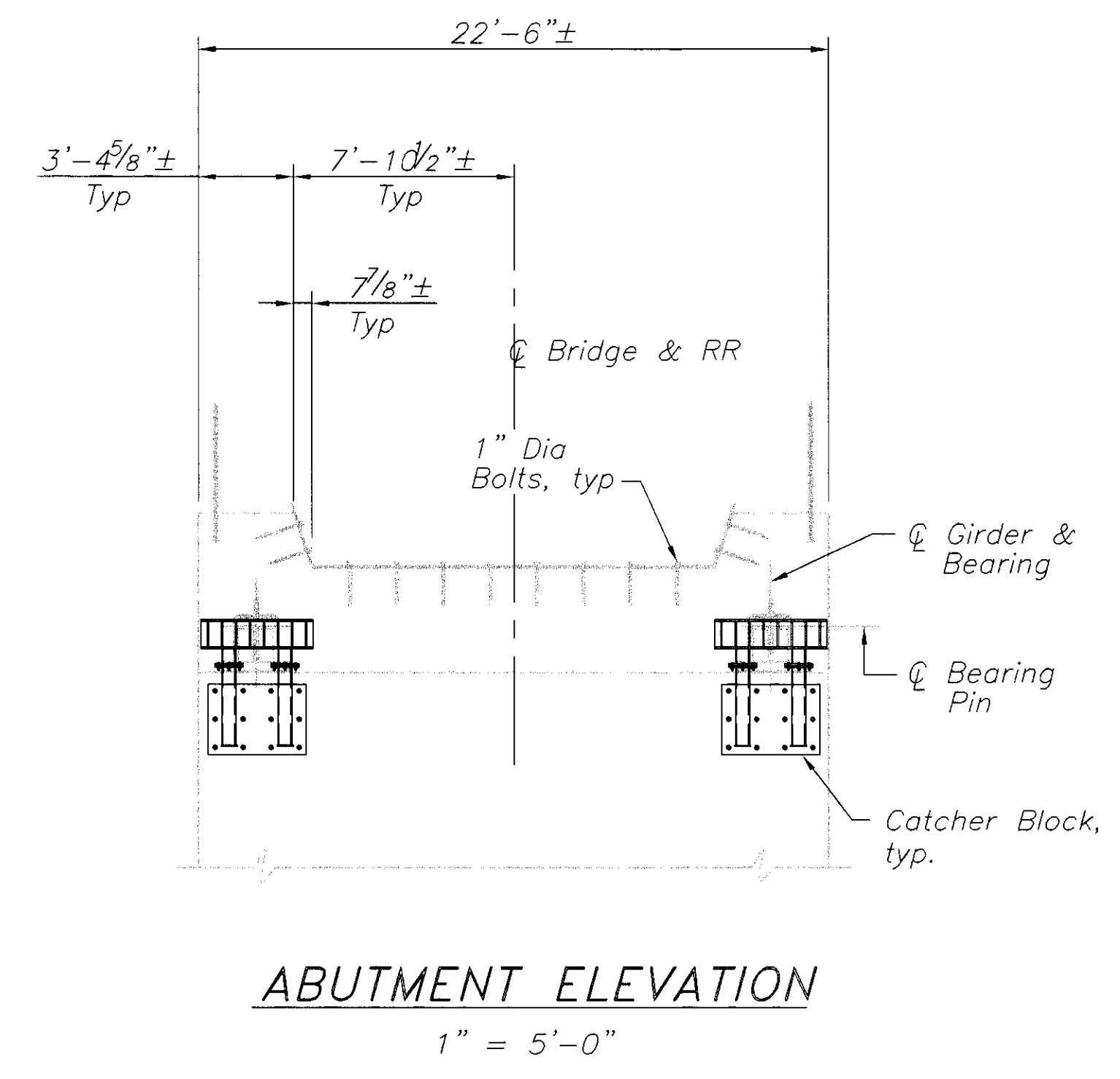
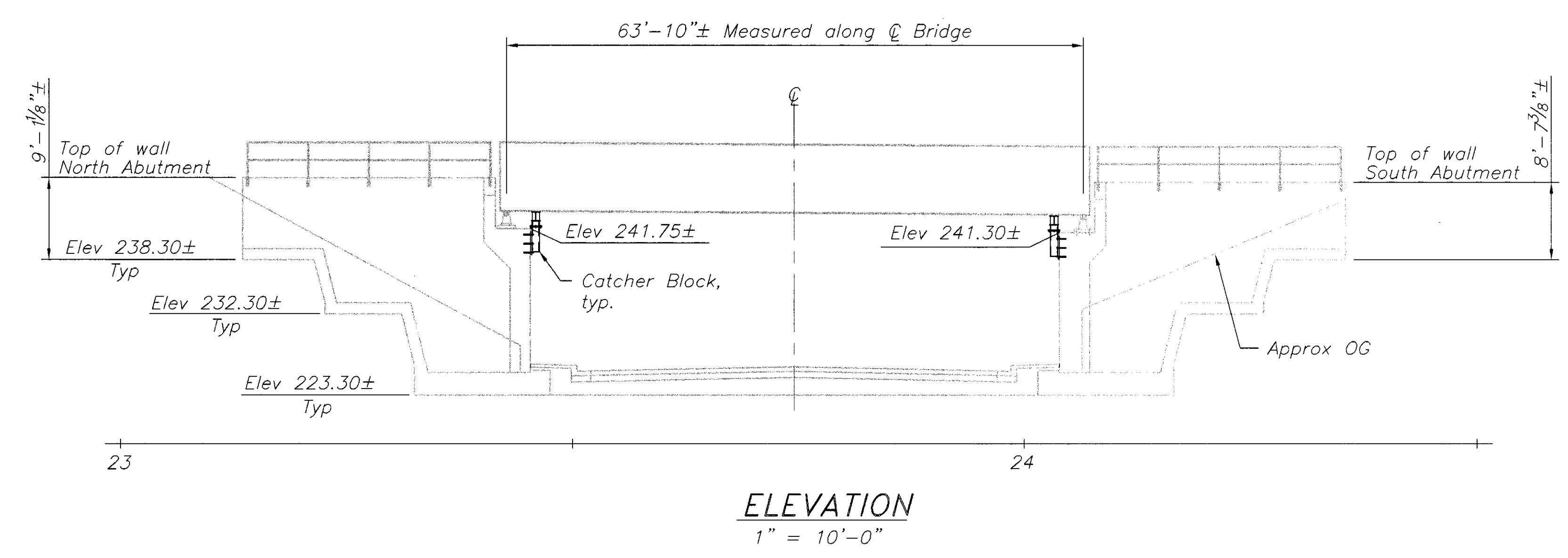
 Jay Walter R.C.E. C41227
 City Engineer



DATE	12/02
FILE NO./LOCATION	0056 B
SHEET	1 OF 3

DIST	COUNTY	ROUTE	POST MILES TOTAL PROJECT	SHEET NO.	TOTAL SHEETS
05	SLO		CR	2	3

REGISTERED ENGINEER - CIVIL 05-22-02 PLANS APPROVAL DATE BUCKLAND & TAYLOR LTD., BRIDGE ENGINEERING 101-788 HARBOURSIDE DRIVE NORTH VANCOUVER, BC, CANADA V7P 3R7	



INDEX TO PLANS

SHEET No.	TITLE
1.	General Plan
2.	Catcher Block Details

GENERAL NOTES

LOAD AND RESISTANCE FACTOR DESIGN
 Bridge Design Specifications (1994 AASHTO with interims and revisions by Caltrans)

DESIGN SEISMIC LOAD
 ATC - 32 ARS Curve
 Peak Bedrock Acceleration = 0.6g
 Soil Profile = Type D
 Fault Moment Magnitude = 7.25±0.25
 Spectra Acceleration Increased by 20%

REINFORCED CONCRETE EXISTING
 Assumed for Retrofit Evaluation
 f'c = 3,700 psi
 fy = 44,000 psi

LEGEND

	Indicates Existing Structure
	Indicates New Construction

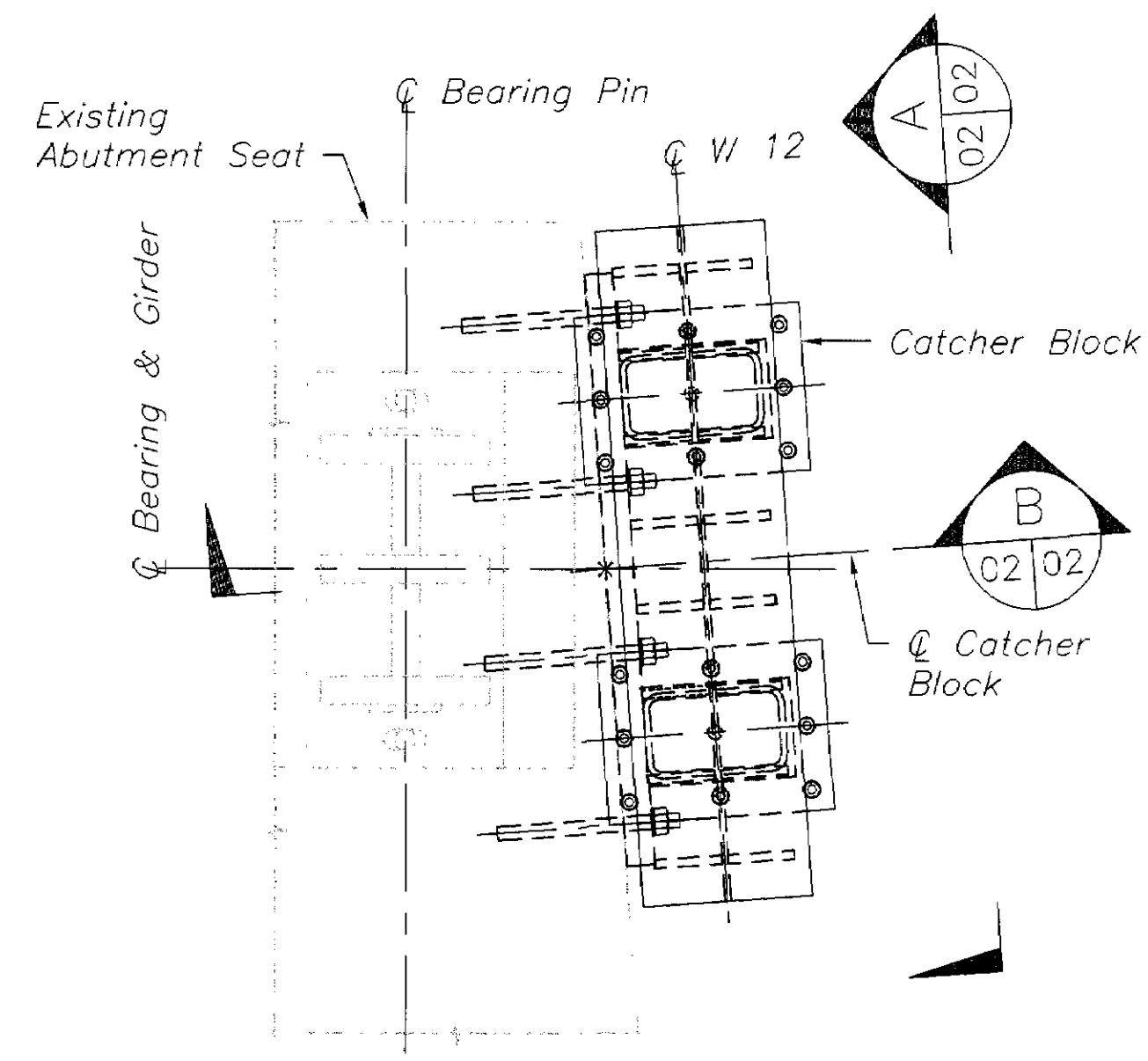
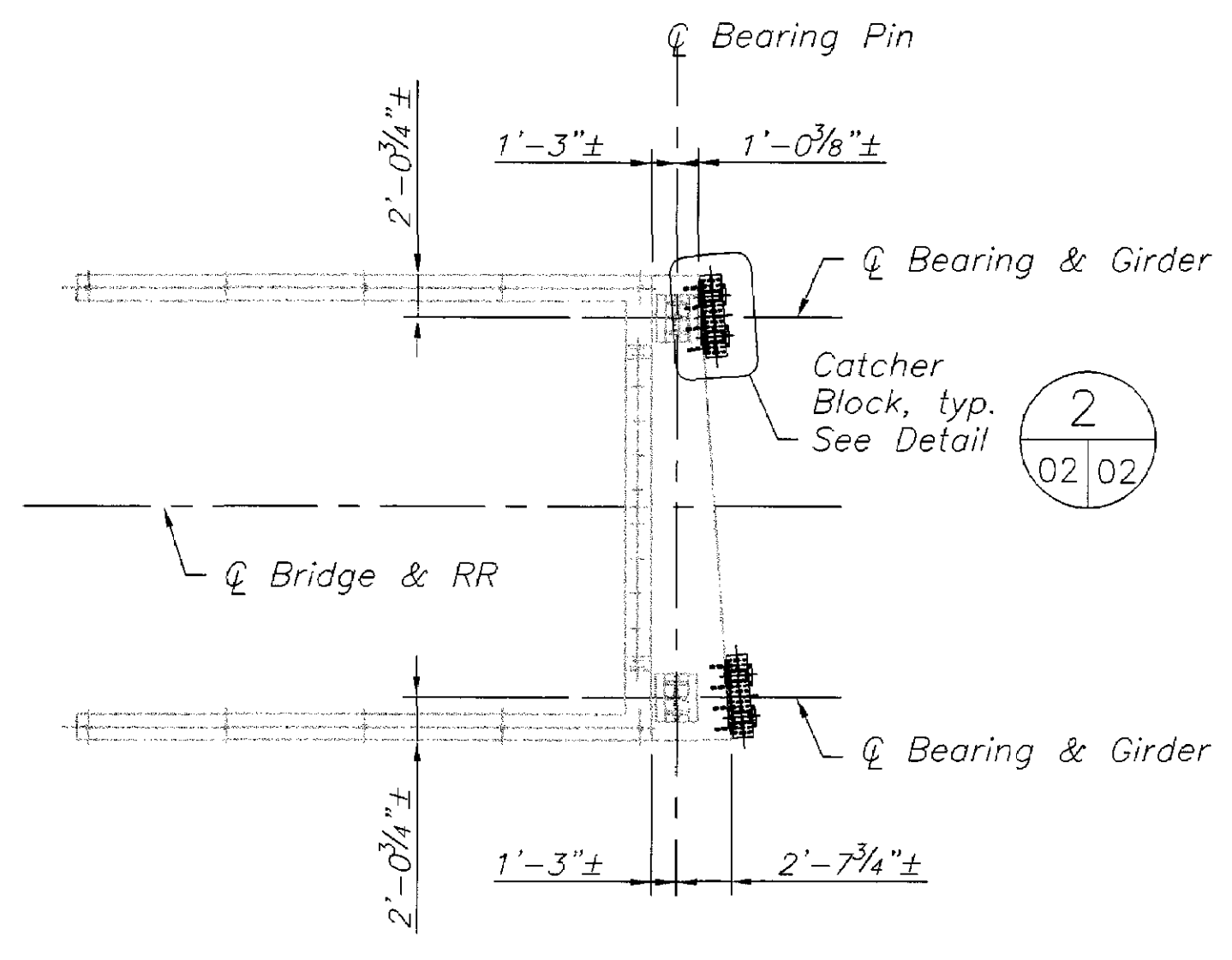
NOTE: THE CONTRACTOR SHALL VERIFY ALL CONTROLLING FIELD DIMENSIONS BEFORE ORDERING OR FABRICATING ANY MATERIAL.

 DESIGN OVERSIGHT D. J. QUEEN 05-22-02 SIGN OFF DATE	DESIGN	BY S. ARNEAU	CHECKED D. J. QUEEN	PREPARED FOR THE CITY OF SAN LUIS OBISPO SOUTH PACIFIC RAILROAD	JORGE E. TORREJON PROJECT ENGINEER	BRIDGE NO.	49C-367	EARTHQUAKE RETROFIT PROJECT JOHNSON AVENUE UNDERPASS GENERAL PLAN		
	DETAILS	BY M. LAMAGNA/C. LEWIS	CHECKED D. J. QUEEN			LAYOUT	BY		POST MILE	CR
	QUANTITIES	BY	CHECKED			SPECIFICATIONS	BY		PLANS AND SPECS COMPARED	REVISION DATES (PRELIMINARY STAGE ONLY)

ORIGINAL SCALE IN INCHES FOR REDUCED PLANS: 0 1 2 3

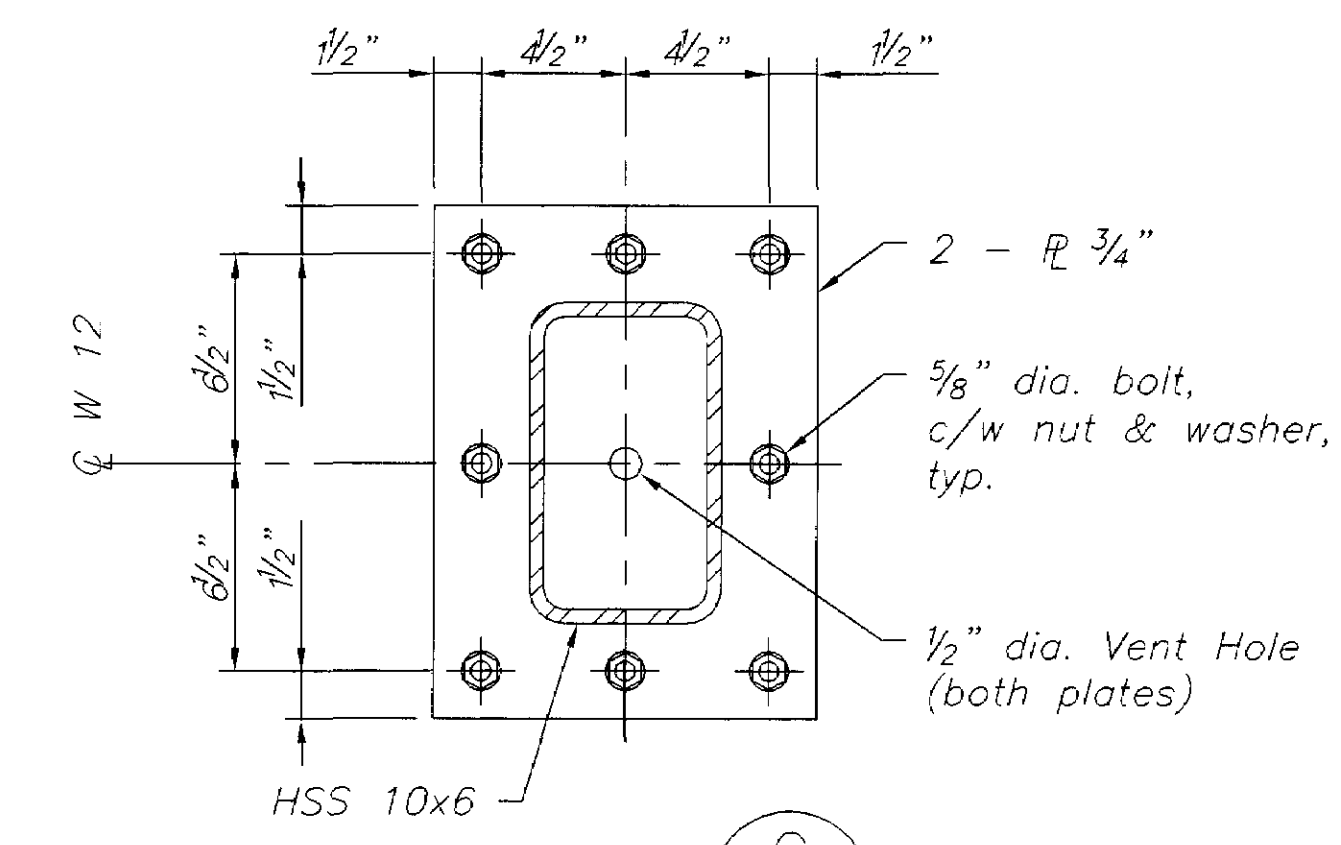
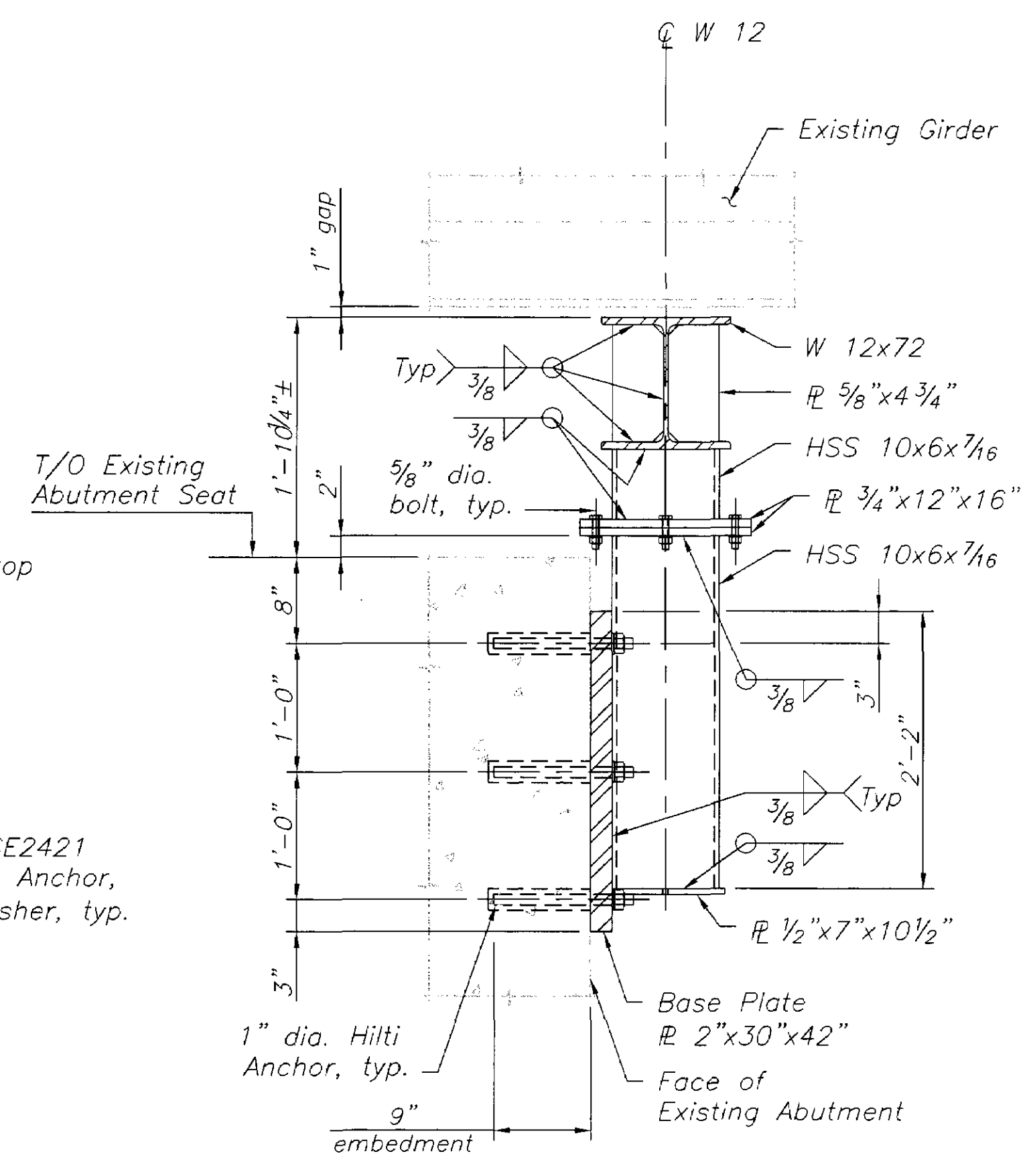
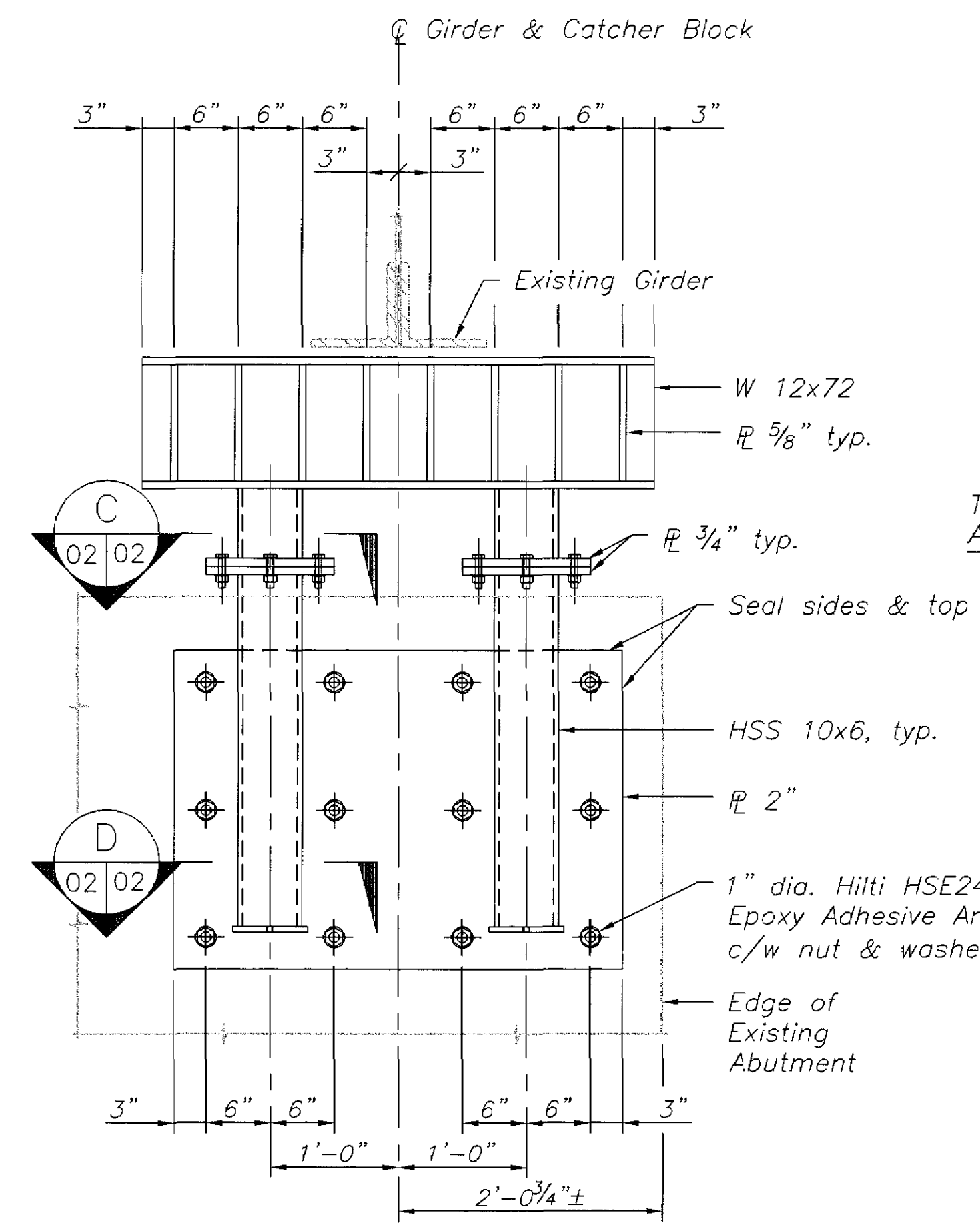
CU EA JOHNSON AVENUE UNDERPASS

DISREGARD PRINTS BEARING EARLIER REVISION DATES

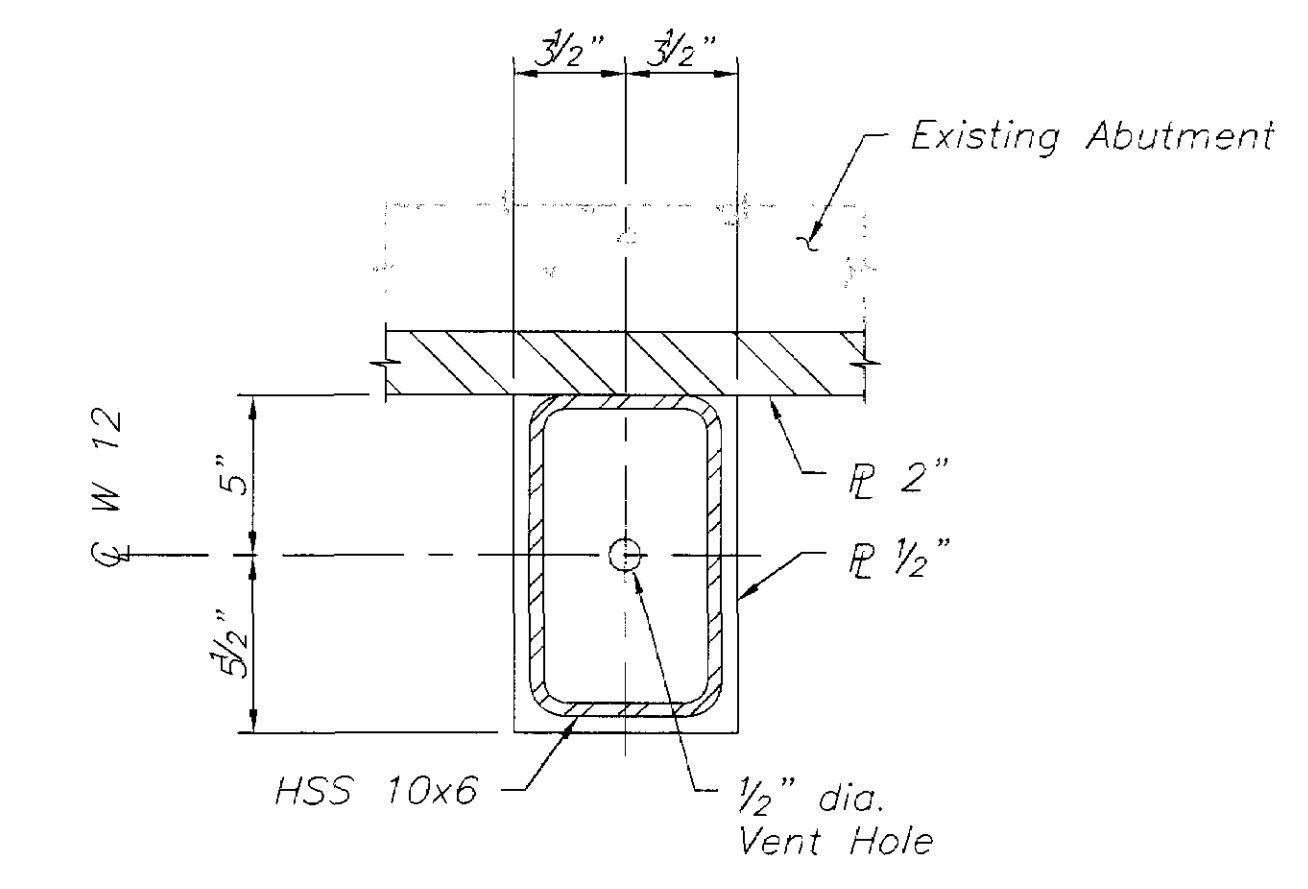


DETAIL 1
Scale: 1/8"=1'-0"

DETAIL 2
Scale: 1"=1'-0"



SECTION C
Scale: 2"=1'-0"



SECTION D
Scale: 2"=1'-0"

SECTION A
Scale: 1"=1'-0"

SECTION B
Scale: 1"=1'-0"

- NOTES:**
- New Materials
 Steel: ASTM A709 - Grade 50
 High Strength Bolts: ASTM A325
 Anchor Rods: ASTM A193 B7
 - All new steel to be hot-dip galvanized in accordance with ASTM A123 - thickness grade 100. All anchors and fasteners to be hot-dip galvanized in accordance with ASTM A153 - Class C.
 - Existing concrete surface under the new anchor base plates shall meet the following requirements:
 - The surface shall be sound and clean of foreign materials.
 - The flatness shall not vary from a straight edge laid on the surface in any direction within the limits of the base plate by more than 1/16".
 - Local irregularities shall be less than 1/16".

- LEGEND**
- Indicates Existing Structure
 - Indicates New Construction

NOTE: THE CONTRACTOR SHALL VERIFY ALL CONTROLLING FIELD DIMENSIONS BEFORE ORDERING OR FABRICATING ANY MATERIAL.

David J. Queen
 DESIGN OVERSIGHT
 D. J. QUEEN
 05-22-02
 SIGN OFF DATE

DESIGN	BY S. ARNEAU	CHECKED D. J. QUEEN			
DETAILS	BY C. LEWIS	CHECKED D. J. QUEEN	LAYOUT	BY	CHECKED
QUANTITIES	BY	CHECKED	SPECIFICATIONS	BY	PLANS AND SPECS COMPARED

PREPARED FOR THE
 CITY OF SAN LUIS OBISPO
 SOUTH PACIFIC RAILROAD
 JORGE E. TORREJON
 PROJECT ENGINEER

BRIDGE NO.
 49C-367
 POST MILE
 CR

EARTHQUAKE RETROFIT PROJECT
 JOHNSON AVENUE UNDERPASS
 CATCHER BLOCK DETAILS