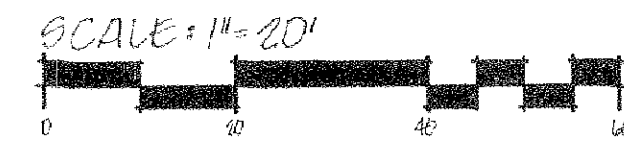


GROVE ST.

HIGUERA STREET

STA 0+00
HIGUERA STREET
GROVE STREET

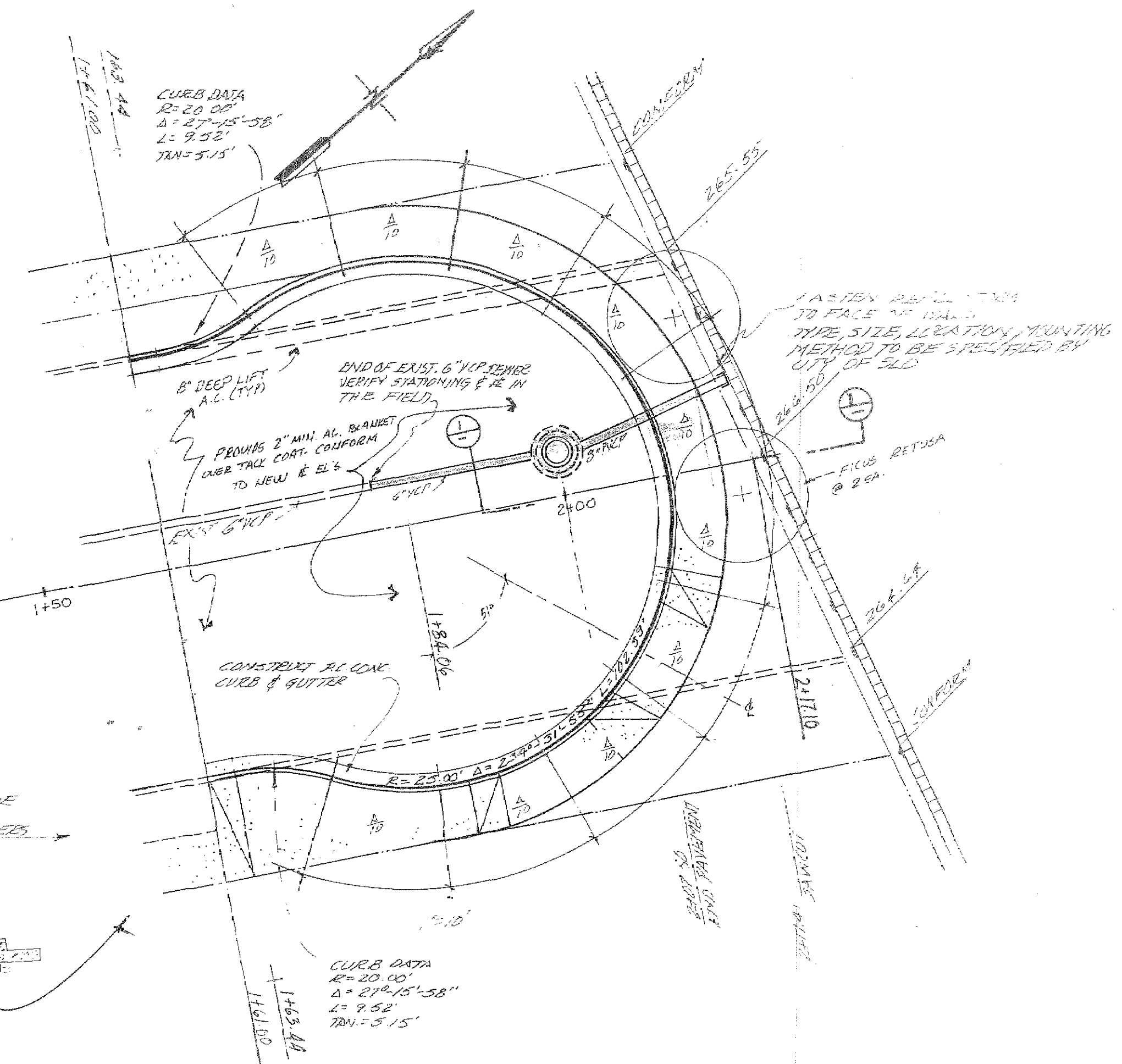


STREET TREES
IN TREE WELLS PLANT
EITHER PYRUS CALLERYANA
OR FICUS NITIDA

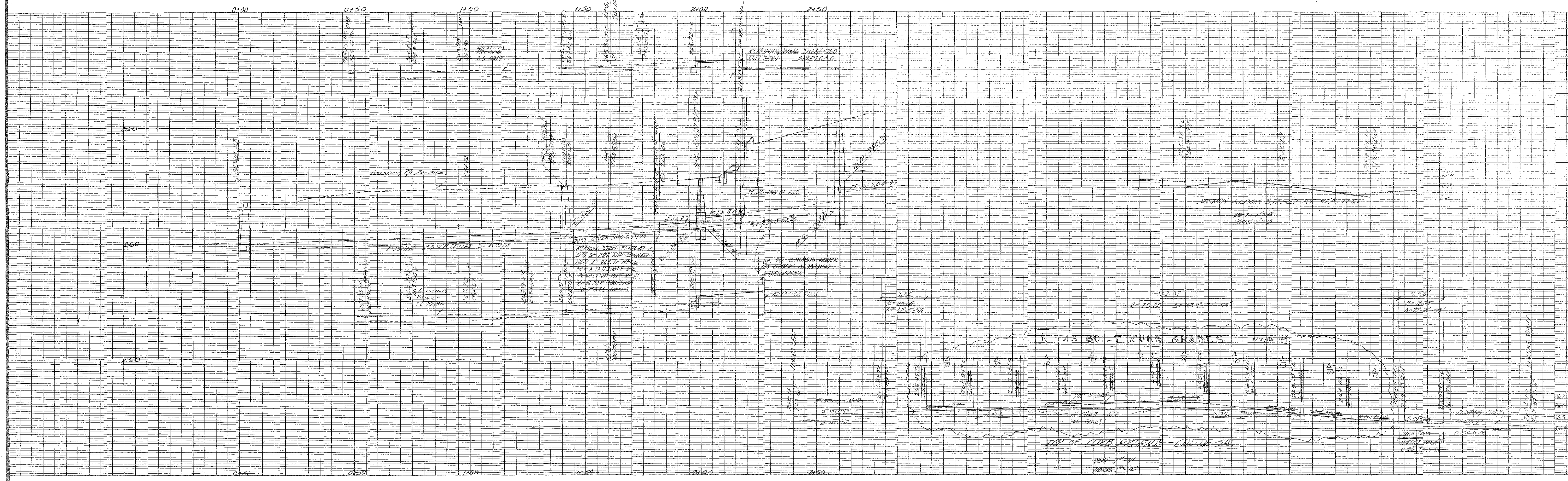
SLO CITY STD. DRAWINGS

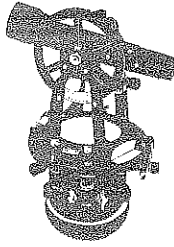
ITEM	DEPT. NO.
SEWER MANHOLE	6410
SEW. MAN. SAND TRAP	6650
SIDEWALK	410
CURB & GUTTER	4030
TREE PLANTING NOTES	7110
TREE PLANTING (STAKING)	7120
TREE WELL BASE RING	7140
TREE WELL COVER	7141

SECTION 1-5



OK
THE
11-05





CENTRAL COAST
ENGINEERING

396 Buckley Road
San Luis Obispo
California 93401

E-1209

November 12, 1985

City of San Luis Obispo
990 Palm Street
San Luis Obispo, CA 93406
ATTN: Ray Pitt

RE: Higuera Street Improvement Plans

Ray,

Please find attached copies of the above improvement plans. The plans show changes to the cul-de-sac curb elevations. While the grades differ from those approved, they better fit the existing improvements and should provide a better finished product. The reasons for the change are as follows:

- 1) Once the end of the existing street was excavated, it was found that pavement existed at the cul-de-sac end and that it was approximately 0.5' below design grade. Lowering the high point by 0.44' provided a better fit to the existing pavement while allowing a 0.08' minimum overlay for the final paved surface.
- 2) The back of sidewalk grade for the approved drawing was 0.16' higher than the walkway tie in elevation at the lot on the northwesterly cul-de-sac. The proposed modification places both pavement sections at the same elevation.
- 3) Lowering the cul-de-sac at the Lee property allowed for property drainage to flow across the sidewalk and thereby eliminate a potential ponding problem in the lawn area.

Although the gutter grade at the northwest portion of the cul-de-sac is below 1% (0.91%), there are no anticipated drainage problems. There is little tributary area for this 50' stretch of paving.

Please review these changes. If you have any questions or comments, please direct them to me.

Yours,


Mike Szatlocky