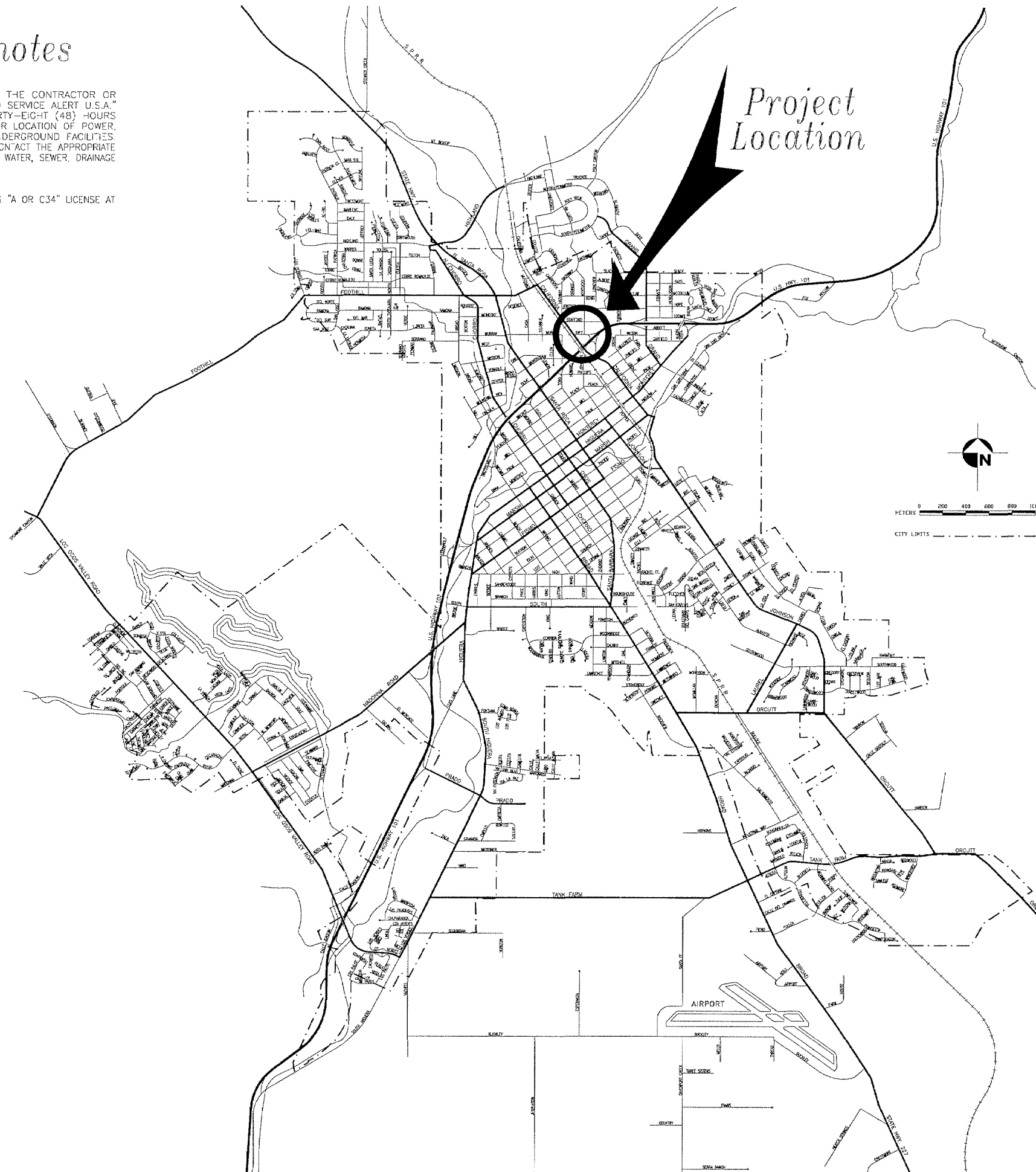


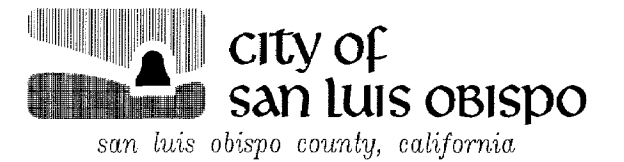
general notes

1. IT SHALL BE THE RESPONSIBILITY OF THE CONTRACTOR OR PERMITEE TO CONTACT "UNDERGROUND SERVICE ALERT U.S.A." TOLL FREE AT 1-800-227-2600 FORTY-EIGHT (48) HOURS PRIOR TO START OF CONSTRUCTION, FOR LOCATION OF POWER, TELEPHONE, OIL AND NATURAL GAS UNDERGROUND FACILITIES. CONTRACTOR OR PERMITEE SHALL ALSO CONTACT THE APPROPRIATE AGENCY FOR THE LOCATION OF CABLE T.V., WATER, SEWER, DRAINAGE OR UNDERGROUND FACILITIES.
2. THE CONTRACTOR SHALL POSSESS A CLASS "A OR C34" LICENSE AT THE TIME THE CONTRACT IS AWARDED.



index to plans

sheet no.	description
1	Location Map & General Notes
2	Taft Street Profile & Plan View



WATER DISTRIBUTION PROJECT

Taft Street
California to Kentucky

RECORD

SPECIFICATION NO. **92-04**

APPROVED BY

Wayne A. Peterson
City Engineer

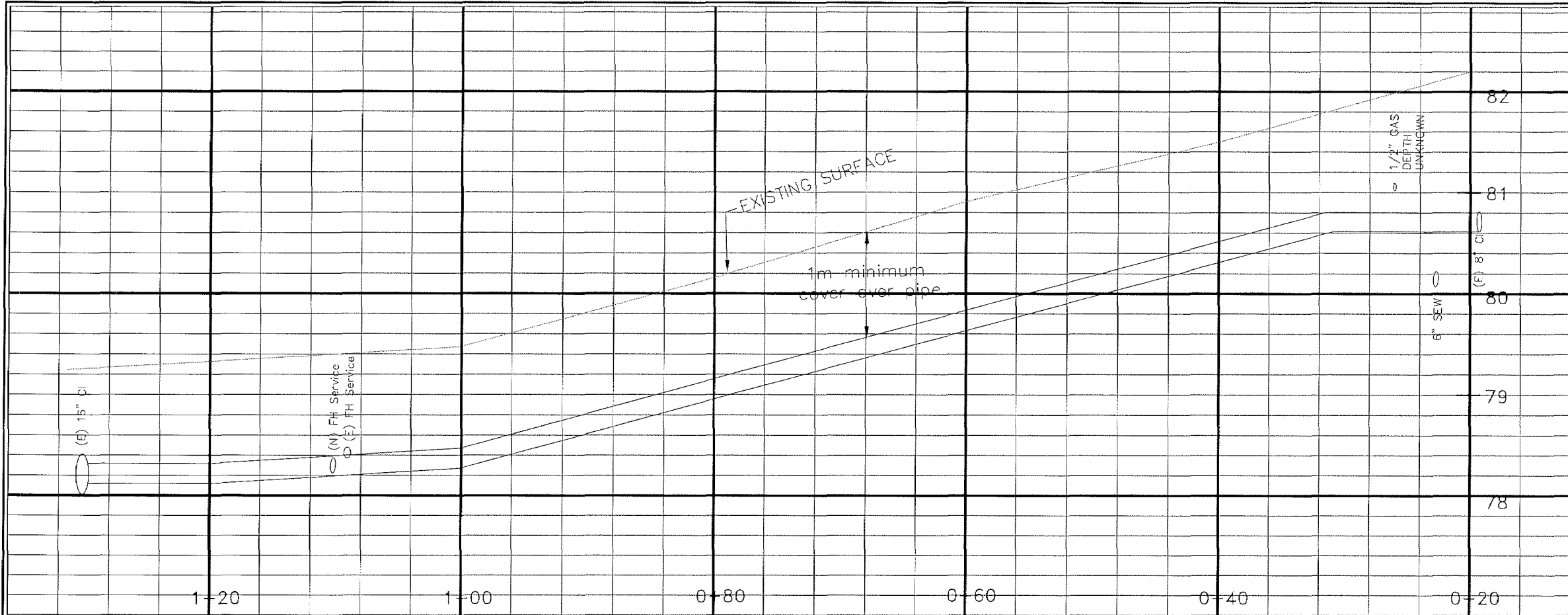
R.C.E. 18598

DATE
03/17/98

FILE NO./LOCATION

SHEET
1 OF 2

NATURE / STATUS OF PLANS	BY	DATE



Notes:

- Contractor to verify depths/diameters of existing waterlines prior to making tie-ins. Provide fittings and adapters as needed to make connections.
- Restore all pavement and sidewalk damaged as a result of operations in accordance with current City Standards.
- All Polybutylene service lines shall be removed and replaced with copper or PE per current standards. Replace fittings as needed.
- Contractor to provide bends as needed to make angle points.

Legend:

(N) = New - to be installed.
(E) = Existing

T = Install valve per std 6340. Size equals line size unless noted otherwise.
▲ = Install Thrust Block
⊕ = Install Fire Hydrant Assembly per Std. 6310
▽ = Install Reducer. Size per Plan.
◻ = Install Cap or Plug

(N) 200mm Tee & (N) 200 mm Valves. STD. 6320 & 6340

(N) 200 mm Waterline

(N) 200mm x 150mm Reducer.

(E) 4" AC

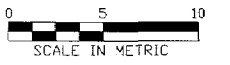
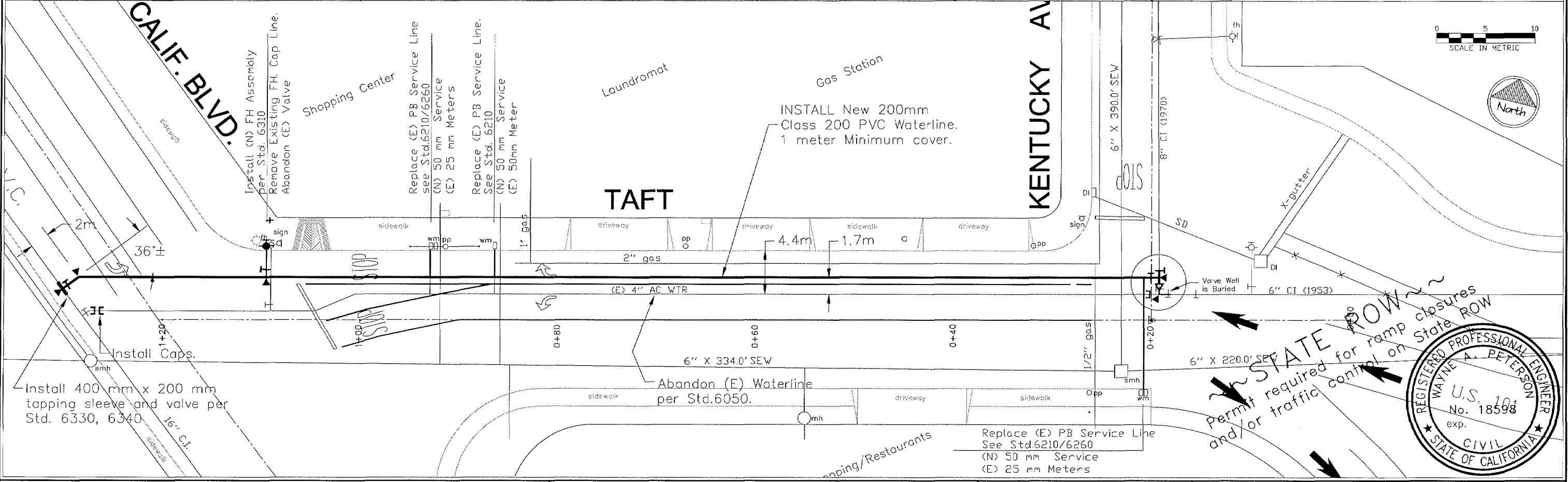
(E) 6" CI

(N) Cap

(N) 150 mm Elbow

Tie-in (E) 8" & (E) 6". Remove (E) Valves, Pipe, Fittings & Thrust Blocks as needed to make tie-ins.

DETAIL A - TIE-IN @ KENTUCKY



DESIGNED BY B.F. DATE APRIL 1998
DRAWN BY C.C. SCALE METRIC H1:400 V1:50
CHECKED BY CHECKER
APPROVED BY UTILITIES DEPARTMENT

WATER DISTRIBUTION PROJECT
Taft St. between California & Kentucky

DESIGNED BY	B.F.	DATE	APRIL 1998
DRAWN BY	C.C.	SCALE	METRIC H1:400 V1:50
CHECKED BY	CHECKER		
APPROVED BY	UTILITIES DEPARTMENT		

PLAN & PROFILE

REGISTRATION NO. 92-04
FILE NO./LOCATION 0025 U.
SHEET 2 OF 2

REGISTERED PROFESSIONAL ENGINEER
WAYNE A. PETERSON
U.S. 101
No. 18598
exp.
STATE OF CALIFORNIA CIVIL

NO.	DATE	REVISION / STATUS OF PLANS

Notes:

- Contractor to verify depths/diameters of existing waterlines prior to making tie-ins. Provide fittings and adapters as needed to make connections.
- Restore all pavement and sidewalk damaged as a result of operations in accordance with current City Standards.
- All Polyethylene service lines shall be removed and replaced with copper or PE per current standards. Replace fittings as needed.
- Contractor to provide bends as needed to make angle points.

Legend:

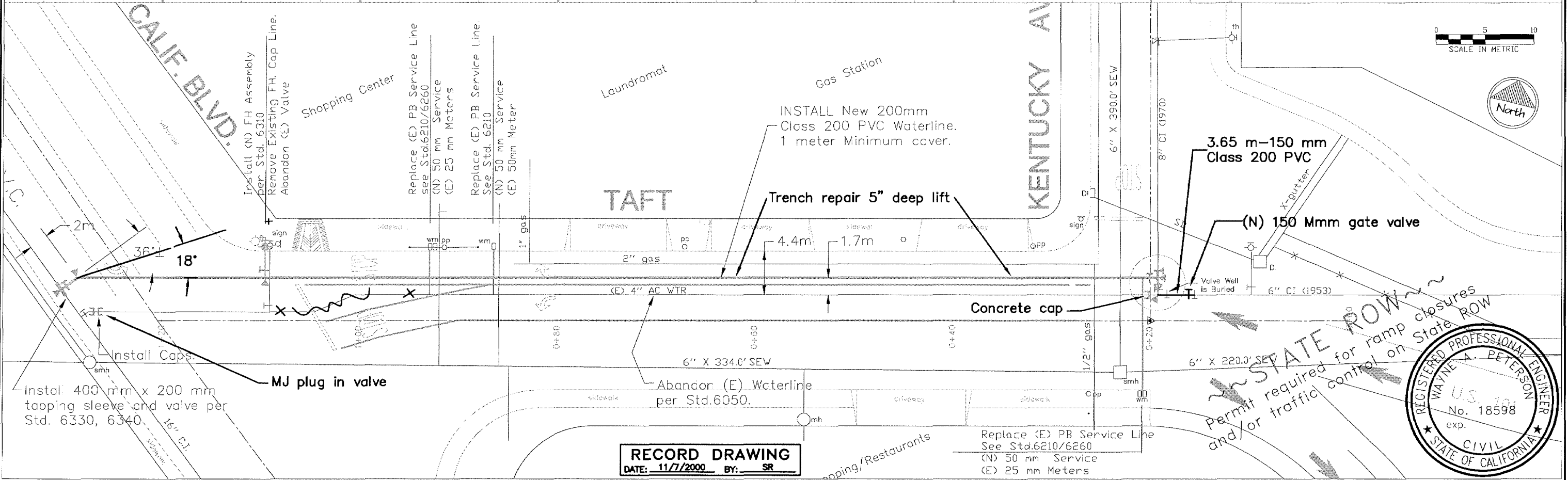
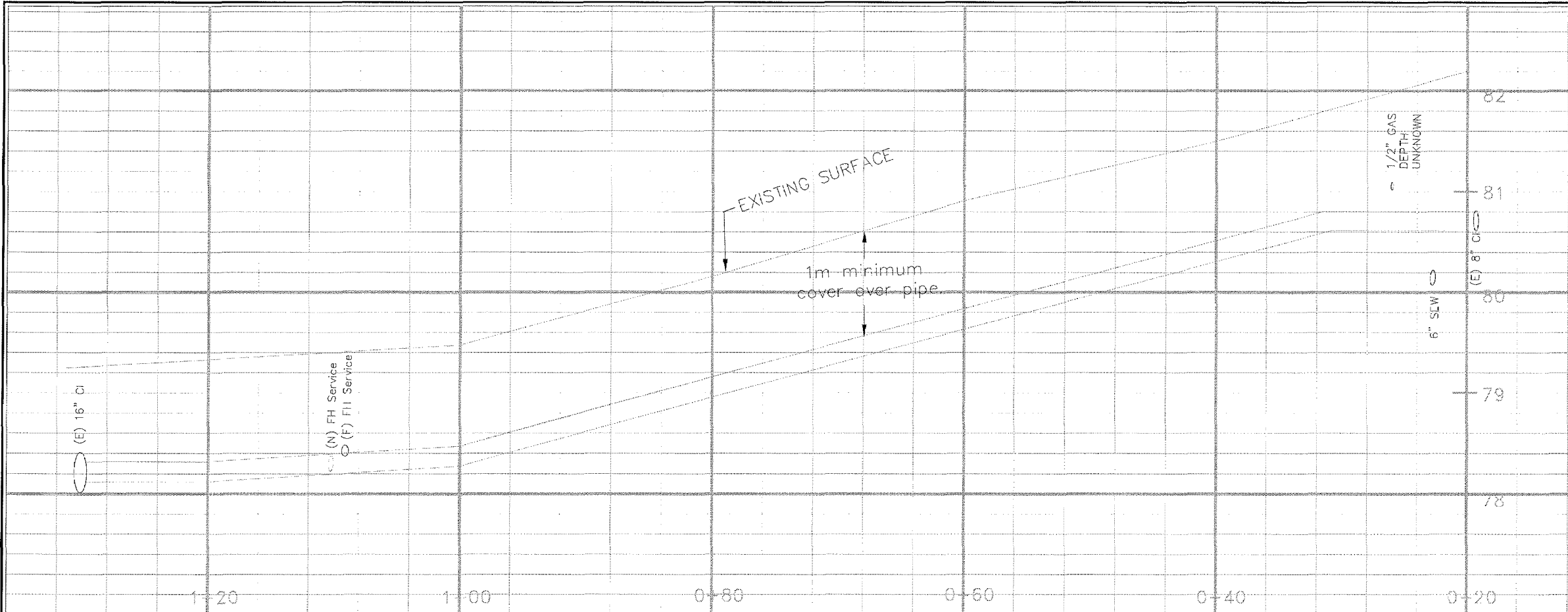
(N) = New - to be installed.
(E) = Existing

— = Install valve per std 6340. Size equals line size unless noted otherwise.
▲ = Install Thrust Block
⊕ = Install Fire Hydrant Assembly per Std. 6310
▽ = Install Reducer. Size per Plan.
⊔ = Install Cap or Plug

(N) 200mm Tee & (N) 200 mm Valves. STD. 6320 & 6340
(N) 200 mm Waterline
(N) 200mm x 150mm Reducer.
(E) 4" AC
(N) Cap
(N) 150 mm Elbow

Tie-in (E) 8" & (E) 6". Remove (E) Valves, Pipe, Fittings & Thrust Blocks as needed to make tie-ins.

DETAIL A - TIE-IN @ KENTUCKY



RECORD DRAWING
DATE: 11/7/2000 BY: SR

DESIGNED BY	B.F.	DATE	APRIL 1998
DRAWN BY	C.C.	SCALE	METRIC H1:400 V1:50
CHECKED BY	CHECKER		
APPROVED BY	UTILITIES DEPARTMENT		