

PUBLIC IMPROVEMENT PLANS FOR PARCEL MAP SLO 97 - 081 TERRACE HILL SAN LUIS OBISPO, CALIFORNIA

GENERAL NOTES

- ALL CONSTRUCTION WORK AND INSTALLATIONS SHALL CONFORM TO THE MAY 1995 EDITION OF THE CITY OF SAN LUIS OBISPO STANDARDS AND SPECIFICATIONS AND ALL WORK SHALL BE SUBJECT TO THE APPROVAL OF THE CITY BUILDING AND ENGINEERING DEPARTMENT, THE SOILS ENGINEER AND THE PROJECT ENGINEER.
- NO CONSTRUCTION SHALL BE STARTED WITHOUT PLANS APPROVED BY THE CITY PUBLIC WORKS DEPARTMENT. THE CITY PUBLIC WORKS DEPARTMENT SHALL BE ADVISED AT LEAST 24 HOURS PRIOR TO STARTING CONSTRUCTION. ANY CONSTRUCTION DONE WITHOUT APPROVED PLANS OR PRIOR NOTIFICATION TO THE CITY PUBLIC WORKS DEPARTMENT WILL BE REJECTED AND WILL BE DONE AT THE CONTRACTOR'S AND/OR OWNER'S RISK.
- SUBGRADE MATERIAL SHALL BE COMPACTED TO A RELATIVE COMPACTION OF 95% IN THE ZONE BETWEEN FINISHED SUBGRADE AND ONE FOOT BELOW. ALL MATERIAL IN TELL SECTIONS BELOW THE ZONE MENTIONED ABOVE SHALL BE COMPACTED TO 95% RELATIVE COMPACTION.
- CONSTRUCTION TESTS SHALL BE MADE ON SUBGRADE MATERIAL AND MATERIAL PLACED AS SPECIFIED BY THE ENGINEER AND AS OUTLINED IN THE SOILS REPORT.
- THE OWNER SHALL PROVIDE THE CITY OF SAN LUIS OBISPO WITH A SET OF REPRODUCIBLE AS-BUILT DRAWINGS OF THE COMPLETED PROJECT PRIOR TO FINAL ACCEPTANCE OF THE WORK BY THE CITY.
- THE CONTRACTOR SHALL PROVIDE DUST CONTROL DURING ALL PHASES OF CONSTRUCTION.
- THE CONTRACTOR SHALL FOLLOW ALL APPLICABLE INDUSTRIAL SAFETY REGULATIONS. THE CITY AND ITS OFFICIALS, THE ENGINEER AND THE OWNER SHALL NOT BE RESPONSIBLE FOR ENFORCING SAFETY REGULATIONS.
- IT SHALL BE THE RESPONSIBILITY OF THE CONTRACTOR TO CONDUCT UNDERGROUND SERVICE ALERT AT 1-800-842-2444 FOR LOCATION OF POWER, GAS, OIL AND TELEPHONE UNDERGROUND FACILITIES. THE CONTRACTOR WILL ALSO BE RESPONSIBLE FOR CONTACTING THE APPROPRIATE AGENCY FOR THE LOCATION OF ALL UNDERGROUND FACILITIES.
- THE CITY INSPECTOR, ACTING ON BEHALF OF THE CITY OF SAN LUIS OBISPO PUBLIC WORKS DEPARTMENT MAY REQUIRE REVISIONS IN THE PLANS TO SOLVE UNFORESEEN PROBLEMS THAT MAY ARISE IN THE FIELD. ALL REVISIONS SHALL BE SUBJECT TO THE APPROVAL OF THE DEVELOPER'S ENGINEER.
- AN INSPECTION OR SUBDIVISION AGREEMENT WITH THE CITY OF SAN LUIS OBISPO IS REQUIRED PRIOR TO THE START OF CONSTRUCTION.
- ANY ALTERATION OR RELOCATION OF EXISTING UTILITY FACILITIES WILL BE THE RESPONSIBILITY OF THE DEVELOPER.
- BENCHMARK: CITY BENCHMARK No. 5-364 BEING A LAT ON NORTHWESTLY CURB 2'-5" DOWNHILL FROM DRIVEWAY INTO WATERS TANK ON BISHOP ST. BETWEEN AUGUSTA & FLORENCE. EL = 109.204 M
- ALL FRESH CUT AND FILL SLOPES SHALL BE PROTECTED WITH EROSION CONTROL PLANTING. REQUIRED PLANTINGS SHALL BE ESTABLISHED AND GROWING PRIOR TO THE REQUEST FOR FINAL APPROVAL AND/OR AS REQUIRED BY THE CITY ENGINEER.
- THE PAVING STRUCTURAL SECTION SHALL BE BASED ON THE TRAFFIC INDEX NOTED ON THIS PLAN AND SOILS TESTS PERFORMED AT THE TIME OF CONSTRUCTION.
- THE CONTRACTOR SHALL LOCATE AND STAKE IN METRIC UNITS ALL EXISTING SEWER, WATER AND PUBLIC UTILITIES IN AREAS TO BE GRADED PRIOR TO THE START OF GRADING.
- ALL PLANTED GROUNDCOVER AREAS SHALL BE WATERED AND MAINTAINED UNTIL THE PLANT GROWTH HAS REACHED A STATE OF MATURITY THAT WILL PREVENT EROSION FROM OCCURRING AND TO ASSURE ESTABLISHMENT OF THE PLANTS. ALL OTHER PLANTINGS (TREES AND SHRUBS) SHALL BE WATERED AND MAINTAINED FOR THE SAME PERIOD. ALL PLANTS THAT DIE DURING THE MAINTENANCE PERIOD SHALL BE REPLACED AND MAINTAINED FOR A PERIOD OF TIME EQUAL TO THE ORIGINAL MAINTENANCE PERIOD.
- NO GRADING SHALL OCCUR WITHIN 0.5 METERS OF PROPERTY LINES EXCEPT AS NECESSARY TO IMPROVE EXISTING CONDITIONS AS APPROVED BY THE CITY ENGINEER.
- UPON COMPLETION OF THE GRADING OPERATION, A SOILS ENGINEER SHALL CERTIFY THAT ALL GRADING COMPLIES WITH THE RECOMMENDATIONS OF THE SOILS REPORT.
- A LICENSED LAND SURVEYOR OR CIVIL ENGINEER SHALL CERTIFY, IN WRITING, THE FINISH GRADES PRIOR TO FINAL ACCEPTANCE OF TRACT IMPROVEMENTS BY THE CITY OF SAN LUIS OBISPO. THE OWNER OR THE OWNER'S REPRESENTATIVE SHALL SUBMIT AN AS-BUILT GRADING PLAN UPON GRADING COMPLETION.
- INTERIM EROSION CONTROL MAY BE REQUIRED WHEN NEEDED BY THE BUILDING DIVISION OR THE PUBLIC WORKS DEPARTMENT.
- AN ENCROACHMENT PERMIT IS REQUIRED FOR ALL WORK DONE WITHIN THE EXISTING CITY RIGHT-OF-WAY.
- RELOCATION OF ANY EXISTING UNDERGROUND UTILITY FACILITIES WILL BE THE RESPONSIBILITY OF THE CONTRACTOR.
- A HEADER BOARD, WALL, BERM OR TWO FOOT LEVEL AREA SHALL BE PROVIDED BETWEEN THE BACK OF THE CITY SIDEWALK AND PLANTING AREAS TO PREVENT SOILS FROM WASHING ONTO SIDEWALKS.
- EXPORT MATERIAL (IF ANY) SHALL BE DISPOSED OF OUTSIDE THE CITY LIMITS IN AN ACCEPTABLE LOCATION.

THESE PLANS, SPECIFICATIONS, IDEAS AND DESIGNS INCORPORATED HEREIN ARE IN EXCHANGE OF SERVICE PREPARED FOR THE SPECIFIC CONSTRUCTION SHOWN HEREON. ANY UNAUTHORIZED USE OR REPRODUCTION FOR ANY OTHER PROJECT WITHOUT WRITTEN AUTHORITY BY ENGINEERING DEVELOPMENT ASSOCIATES IS PROHIBITED. COPYRIGHT © 1995, ENGINEERING DEVELOPMENT ASSOCIATES. ALL RIGHTS RESERVED.

SHEET INDEX

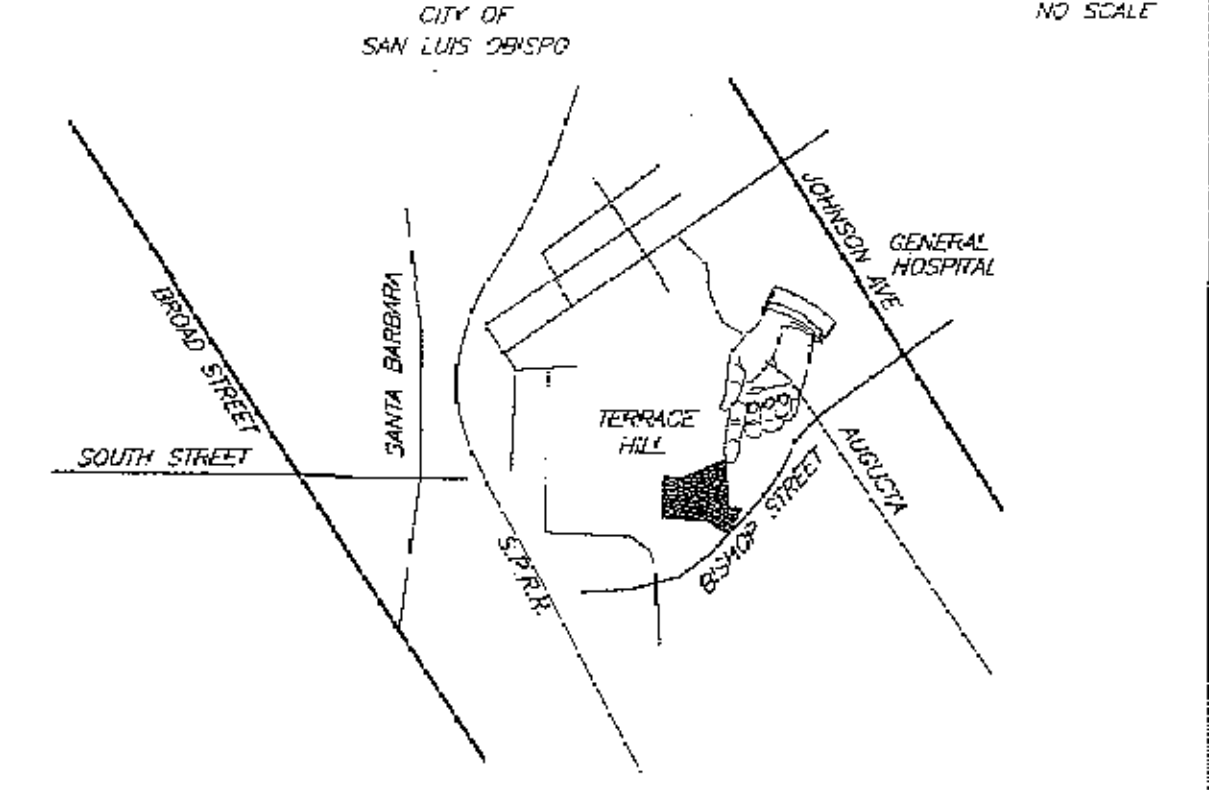
SHEET No.	SHEET TITLE
1	COVER SHEET
2	PLAN & PROFILE: PUBLIC SEWER
3	PLAN AND PROFILE: PRIVATE DRIVEWAY
4	GRADING PLAN
5	DETAIL SHEET

LEGEND

LINE/TYPE LEGEND:	
WATER	=====
EXISTING WATER	=====
SEWER	=====
EXISTING SEWER	=====
STEAM DRAIN	=====
EXISTING STEAM DRAIN	=====
GAS	=====
EXISTING GAS	=====
UTILITY	=====
EXISTING UTILITY	=====
EAST FENCE	=====
EASEMENT	=====
BOUNDARY	=====
LOT LINE	=====
WALL	=====

SYMBOLS:		ABBREVIATIONS:	
VALVE	⊙	MANHOLE	MH
METER BOX	⊕	CLEAN OUT	CO
ELECTRIC BOX	⊖	CATCH BASIN	CB
CLEAN OUT	⊙	FIRE HYDRANT	FH
MANHOLE	⊙	TYPICAL	TP
CATCH BASIN	⊕	WATER	W
FIRE HYDRANT	⊕	SANITARY SEWER	SS
UTILITY POLE	⊕	GAS	G
THRUST BLOCK	⊕	ELECTRIC	ELEC
CLEAN-OUT	⊕	SKIMM	S
PUMP	⊕	STORM DRAIN	SD
PROPOSED WELL	⊕	FINISHED FLOOR	FF
STREET LIGHT	⊕	FINISHED SURFACE	FS
TRANSFORMER	⊕	TOP OF WALL	TW
		ELECTRIC	ETC
		TELEPHONE	
		CABLE	

VICINITY MAP



RECORD DRAWING

JEFFREY J. EMBICK RICE 40897 EXP. DATE

THESE DRAWINGS ARE BASED ON INFORMATION SUPPLIED BY OTHERS WITHOUT VERIFICATION BY ENGINEERING DEVELOPMENT ASSOCIATES. NO RESPONSIBILITY IS ASSUMED BY ENGINEERING DEVELOPMENT ASSOCIATES FOR THE ACCURACY OR COMPLETENESS OF THIS INFORMATION.



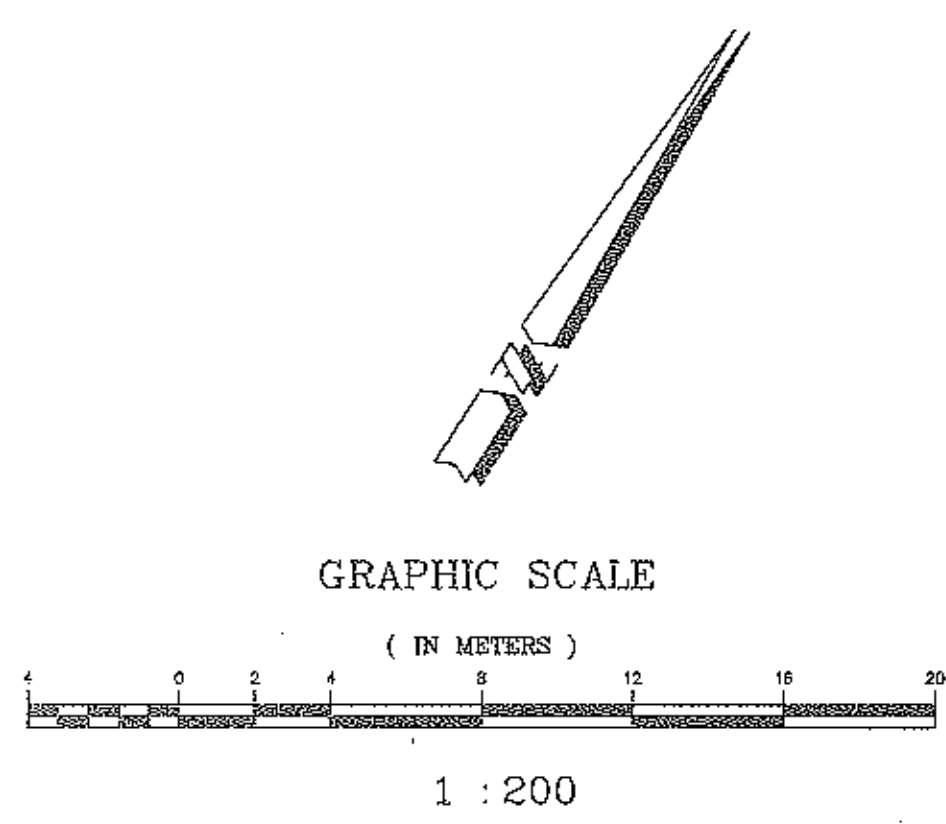
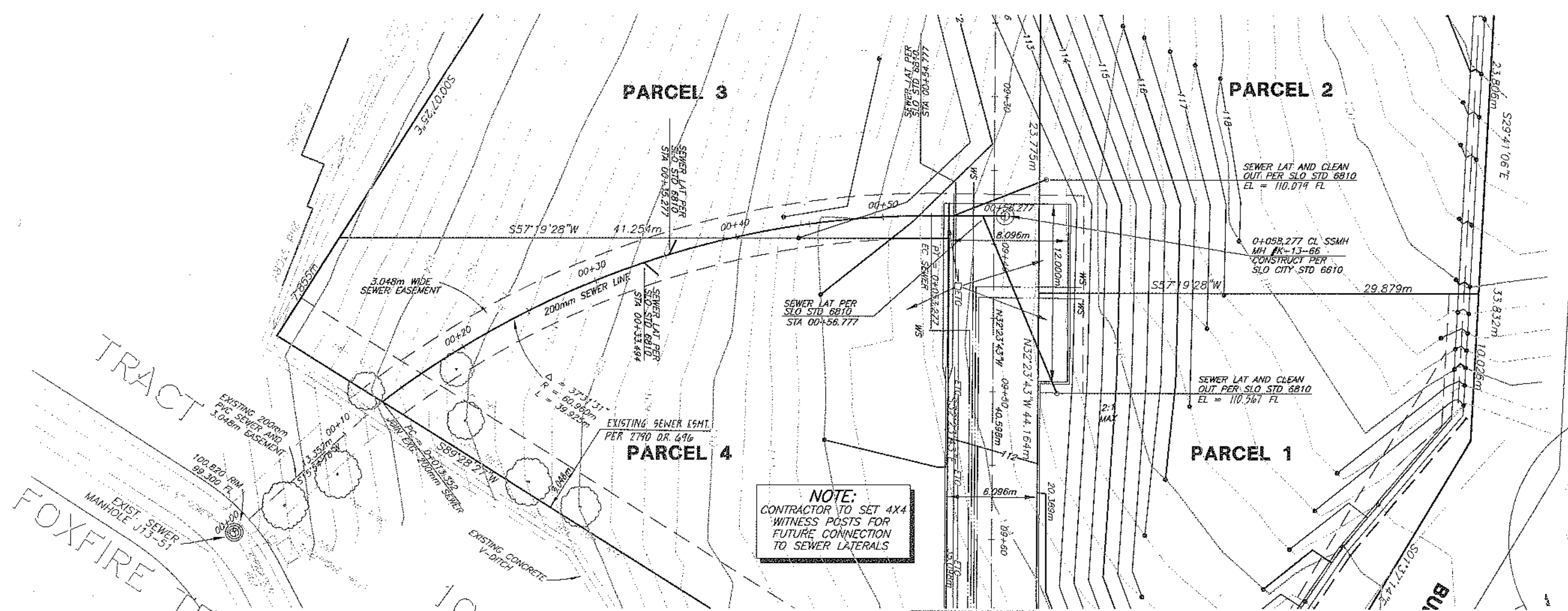
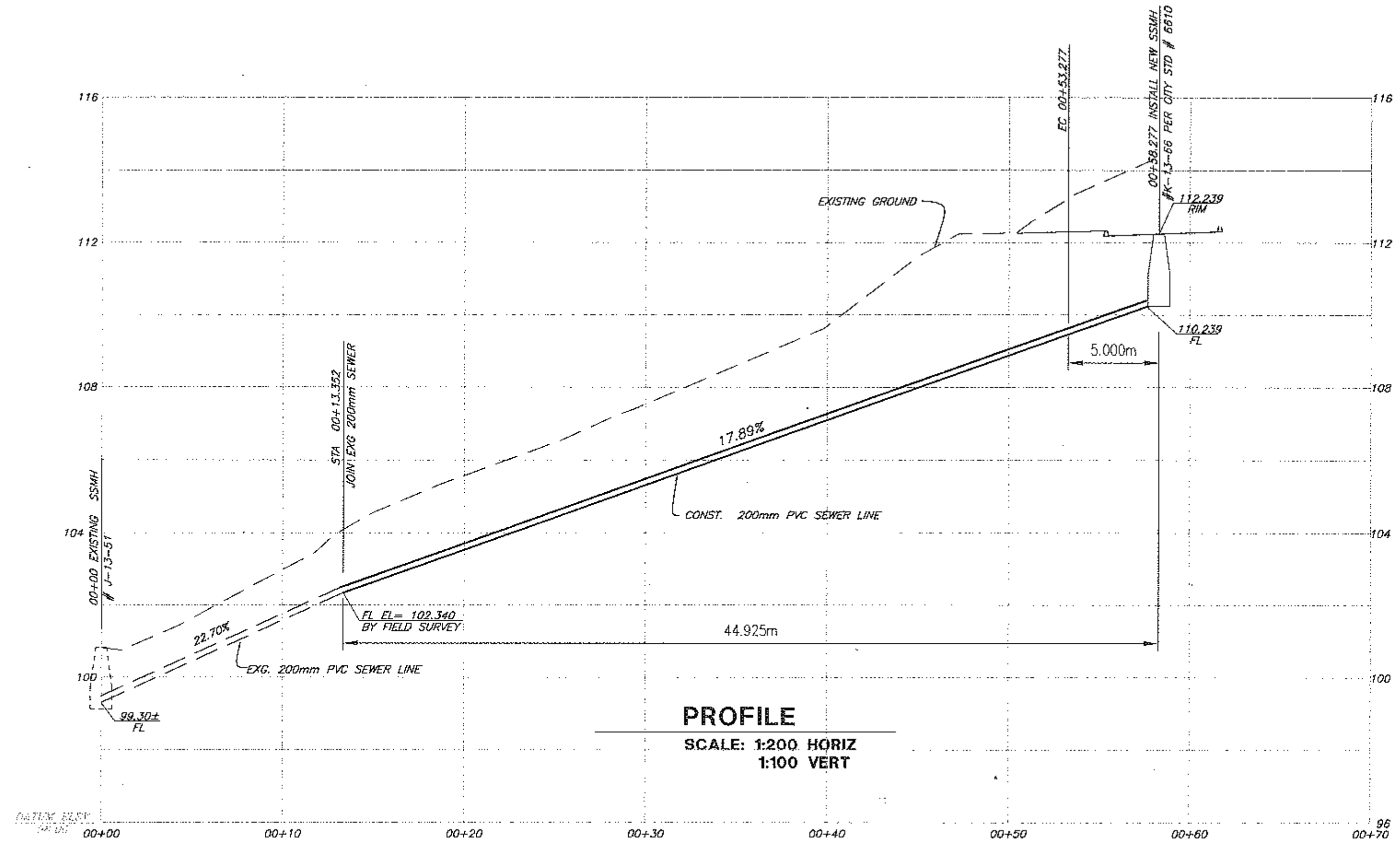
NOTICE

APPROVAL BY THE CITY DOES NOT GUARANTEE ACCURACY NOR COMPLETENESS OF THESE PLANS. IT DOES AUTHORIZE THE OWNER TO BUILD THE PROJECT HEREON. IT SHALL BE THE RESPONSIBILITY OF THE OWNER AND ENGINEER OF RECORD TO CORRECT ANY DEFICIENCIES THAT APPEAR AND ENGINEERING STANDARDS SHALL BE FOLLOWED UNLESS THEY ARE SPECIFICALLY NAMED OR WRITTEN BY NOTES ON THE PLANS. THE ENGINEER OF RECORD SHALL PROVIDE REPRODUCIBLE "AS-BUILT" PLANS AND 3 SETS OF MICROFORM PLANS TO THE CITY PRIOR TO THE PROJECT BEING ACCEPTED BY THE CITY.



ELECTRICAL SYSTEM REVIEWED BY:		ENGINEERING DEVELOPMENT ASSOCIATES	
<i>R. P. ...</i>	1-15-98	1920 NIPOMO STREET SAN LUIS OBISPO, CALIFORNIA 93401 PH: 805/548-6008 FAX: 805/549-0704	
GAS SYSTEM REVIEWED BY:		REVISIONS	
<i>R.C. Mantel</i>	1-15-98	DATE	APPROVED
<i>Larry ...</i>	1-6-98		
<i>e. b. a.</i>	1-15-98		

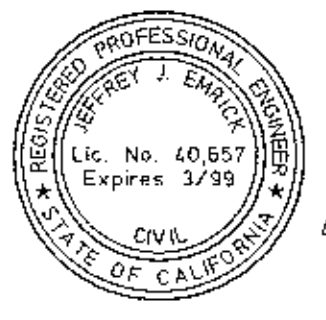
CITY OF SAN LUIS OBISPO		DESIGNER:
DEPARTMENT OF PUBLIC WORKS		M. STANTON
SCALE: AS SHOWN	APPROVED: <i>Donald McKernan</i> 2-9-98	DATE: DEC 1997
PUBLIC IMPROVEMENT PLANS FOR PARCEL MAP SLO 97 - 081 TITLE SHEET		SHEET 1 OF 6 SHEETS
		UTILITIES ENGINEER: <i>W. J. ...</i>



RECORD DRAWING
JEFFREY J. EMBICK RCE 40857 EXP. DATE
THESE DRAWINGS ARE BASED ON INFORMATION SUPPLIED BY OTHERS WITHOUT VERIFICATION BY ENGINEERING DEVELOPMENT ASSOCIATES. NO RESPONSIBILITY IS ASSUMED BY ENGINEERING DEVELOPMENT ASSOCIATES FOR THE ACCURACY OR COMPLETENESS OF THIS INFORMATION.



NOTICE
APPROVAL BY THE CITY DOES NOT GUARANTEE ACCURACY NOR COMPLETENESS OF THESE PLANS. IT DOES AUTHORIZE THE OWNER TO BUILD THE PROJECT HEREON. IT SHALL BE THE RESPONSIBILITY OF THE OWNER AND ENGINEER OF RECORD TO CORRECT ANY DEFICIENCIES THAT APPEAR AND ENGINEERING STANDARDS SHALL BE FOLLOWED UNLESS THEY ARE SPECIFICALLY WAIVED OR MODIFIED BY NOTES ON THE PLANS. THE ENGINEER OF RECORD SHALL PROVIDE REPRODUCIBLE "AS BUILT" PLANS AND 3 SETS OF MICROFICHE PLANS TO THE CITY PRIOR TO THE PROJECT BEING ACCEPTED BY THE CITY.



ELECTRICAL SYSTEM REVIEWED BY: <i>C. Rando J. DeSaena</i> 1-15-98	ENGINEERING DEVELOPMENT ASSOCIATES 1320 INPOMO STREET SAN LUIS OBISPO, CALIFORNIA 93401 PH. (805) 549-8658 FAX (805) 549-8704
GAS SYSTEM REVIEWED BY: <i>R. C. Mandel</i> 1-15-98	JEFFREY J. EMBICK RCE 40857 DATE 1-14-98
TELEPHONE SYSTEM REVIEWED BY: <i>Clayton Horn</i> 1-14-98	REVISIONS
CABLE TELEVISION SYSTEM REVIEWED BY: <i>C. But</i> 1-15-98	APPROVED RCE CITY

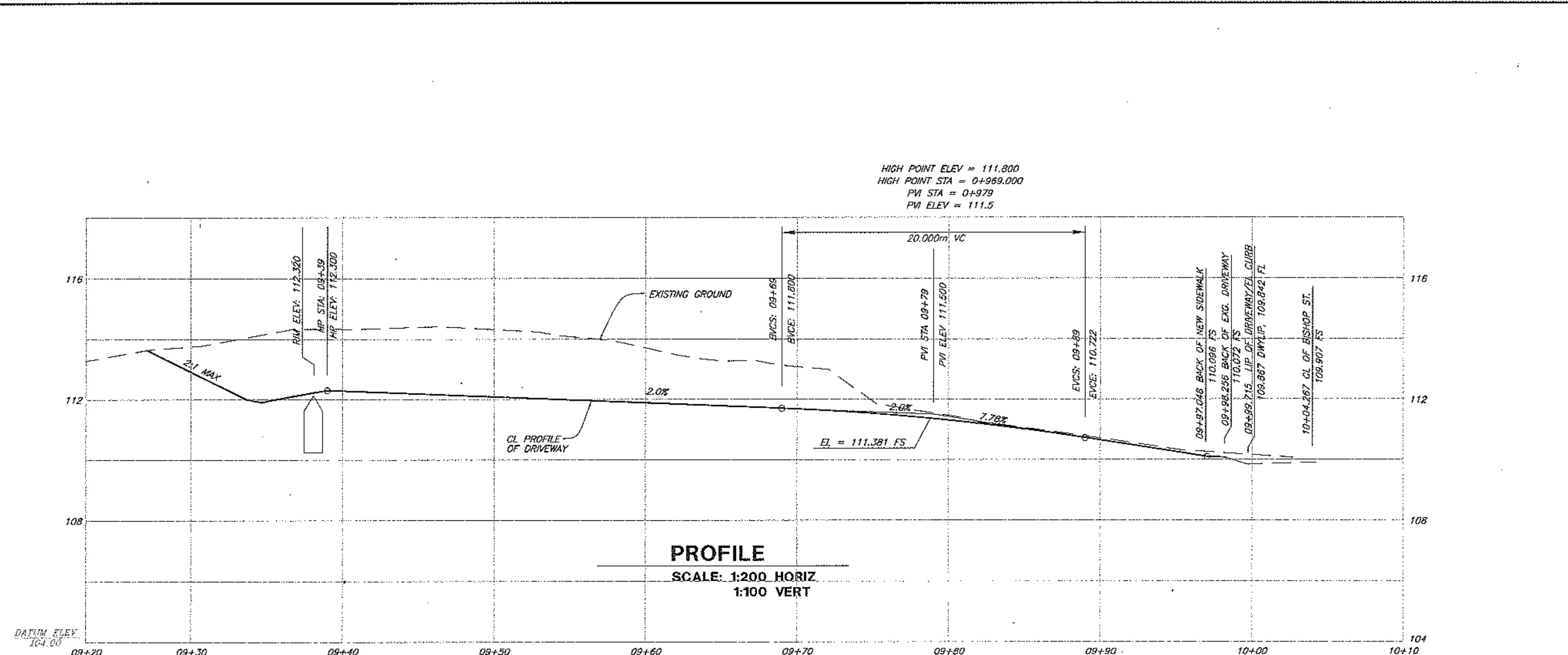
CITY OF SAN LUIS OBISPO
DEPARTMENT OF PUBLIC WORKS

SCALE: 1:200 HORIZ
1:100 VERT

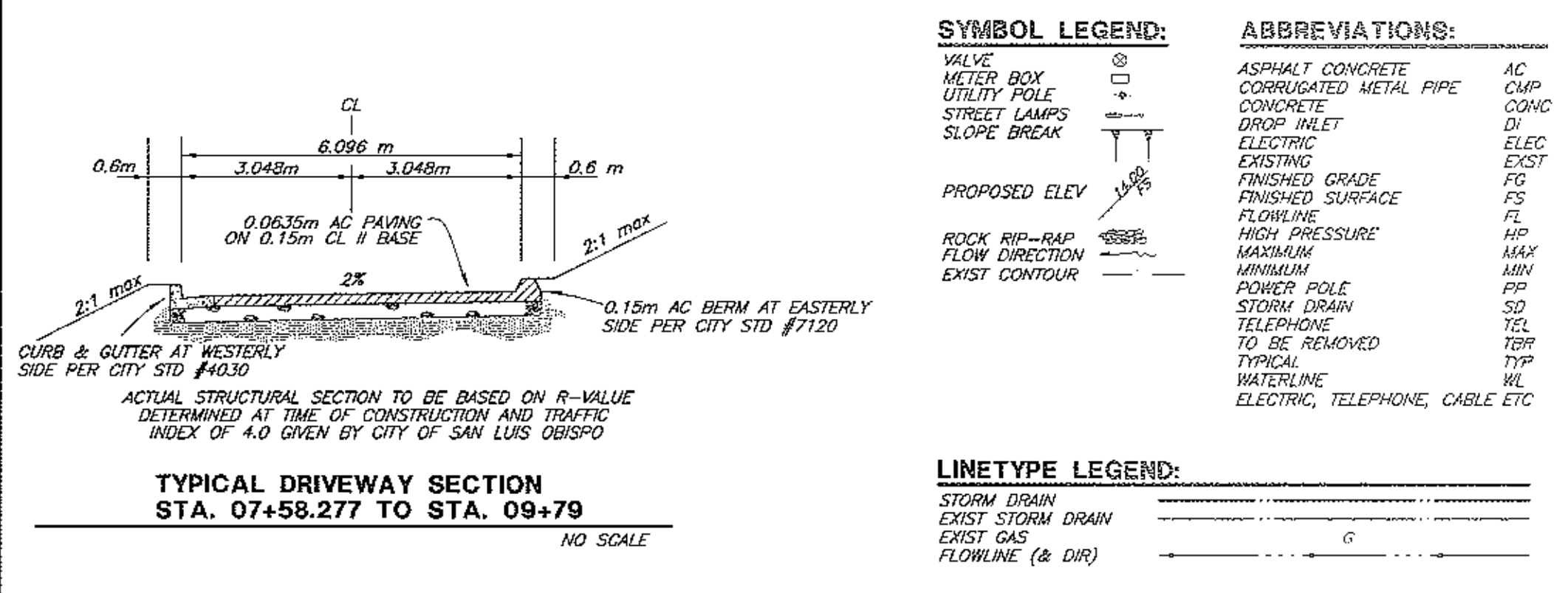
APPROVED: *Mauro McKeamy* 2/9/98
CITY ENGINEER

DESIGNER: _____
SURVEY: _____
DATE: JAN. 1998
SHEET: 2 OF 6 SHEETS
REFERENCES: _____
UTILITIES ENGINEER: *Whitaker*

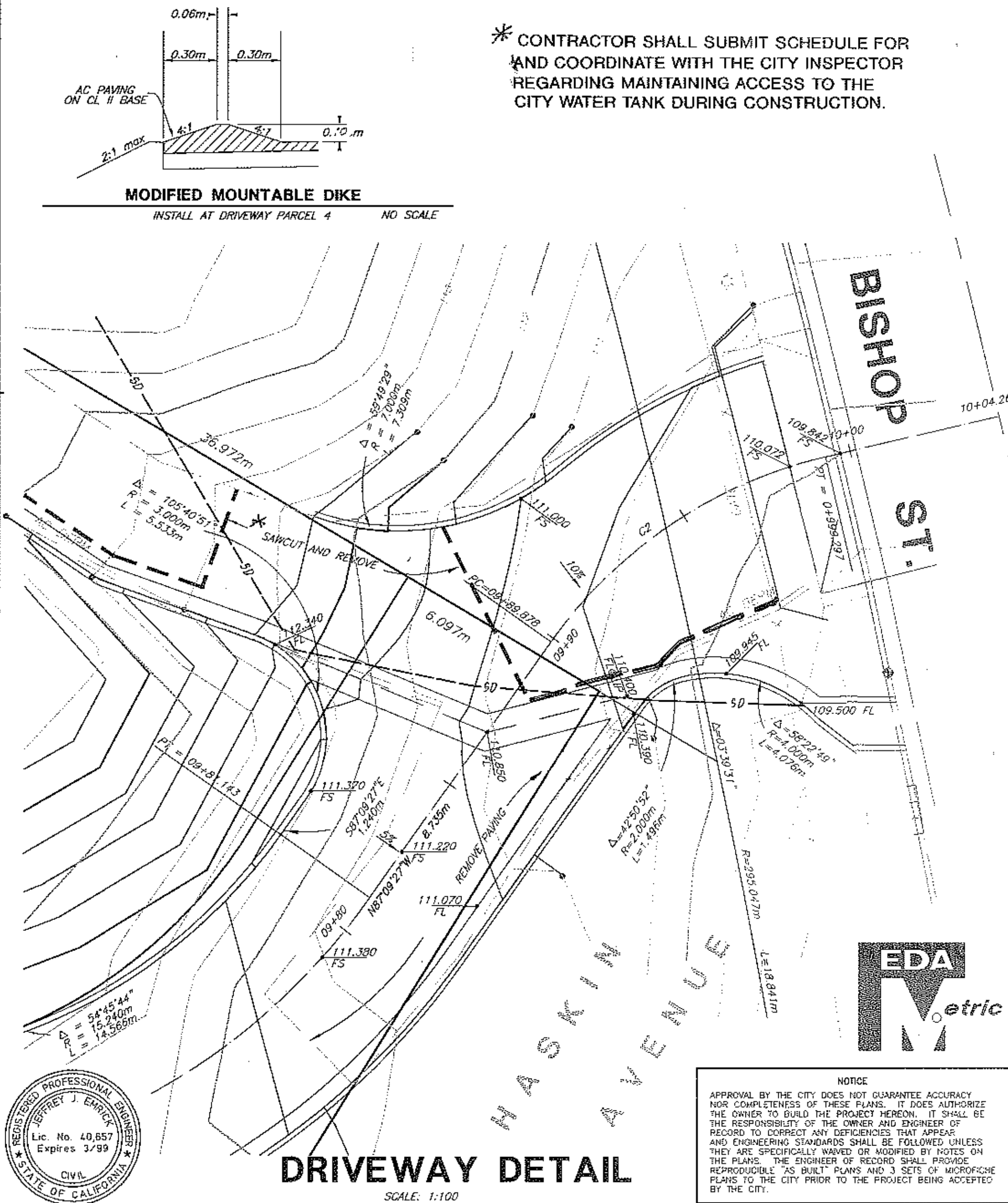
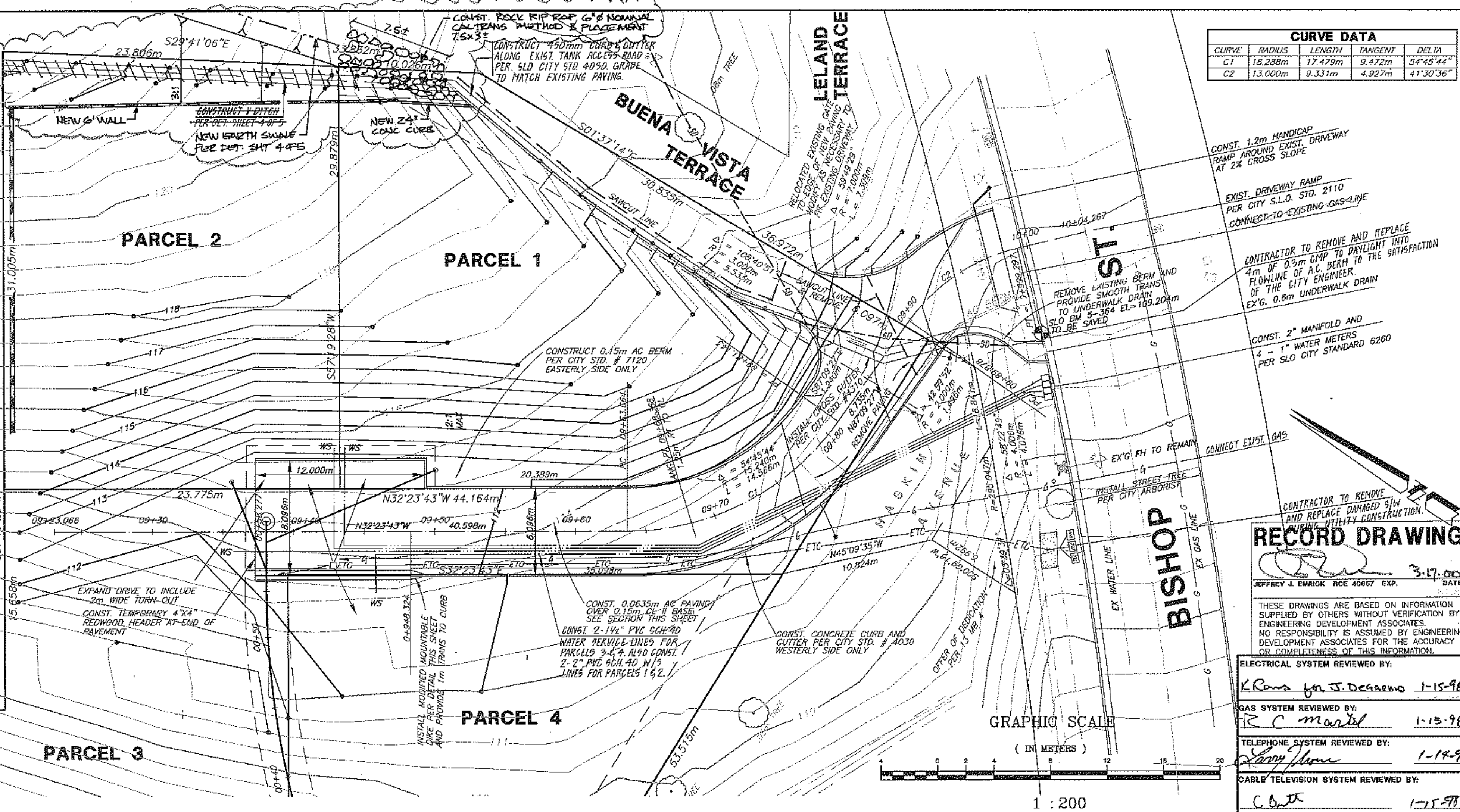
**PARCEL MAP SLO 97-081
PUBLIC SEWER LINE**



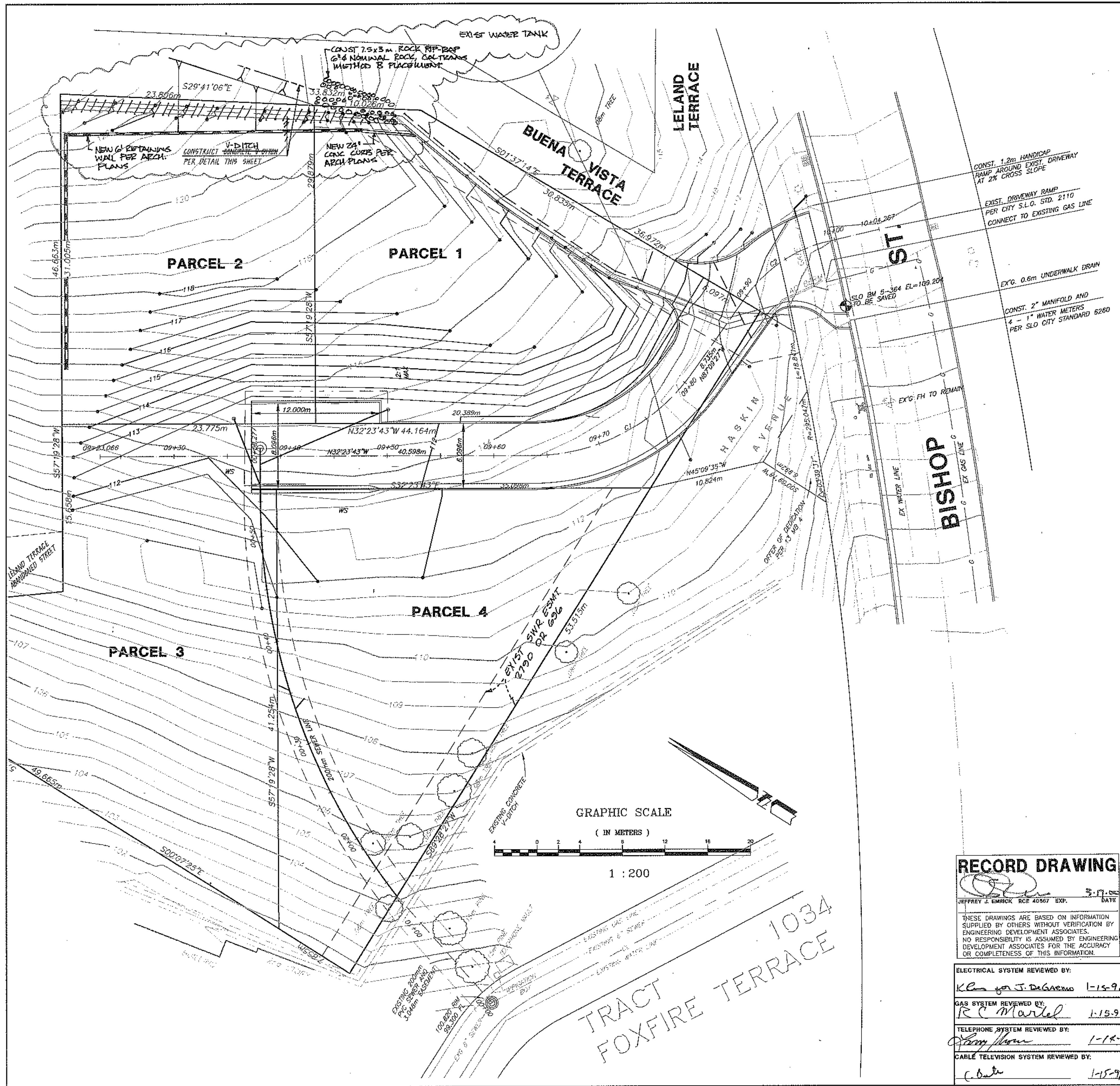
PROFILE
SCALE: 1:200 HORIZ
1:100 VERT



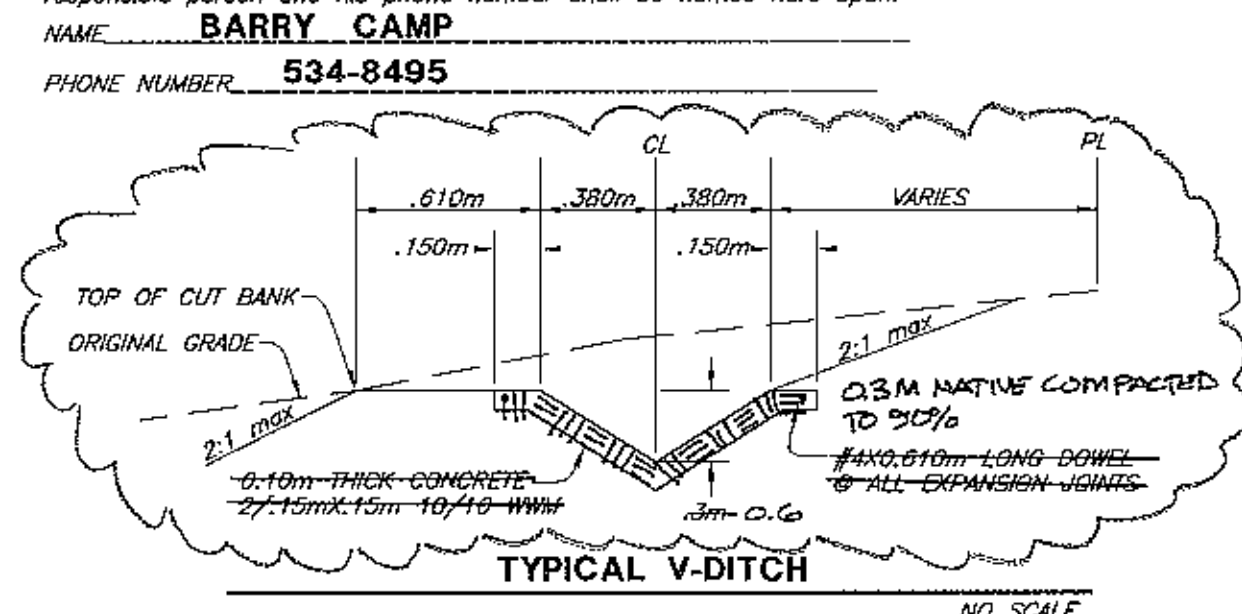
* CONTRACTOR SHALL SUBMIT SCHEDULE FOR AND COORDINATE WITH THE CITY INSPECTOR REGARDING MAINTAINING ACCESS TO THE CITY WATER TANK DURING CONSTRUCTION.



ELECTRICAL SYSTEM REVIEWED BY: K. Ross for J. DeGaetano 1-15-98	ENGINEERING DEVELOPMENT ASSOCIATES 1320 NIPOMO STREET SAN LUIS OBISPO, CALIFORNIA 93401 PH (805) 548-9858 FAX (805) 548-9704	CITY OF SAN LUIS OBISPO DEPARTMENT OF PUBLIC WORKS	DESIGNER: DATE: JAN. 1998
GAS SYSTEM REVIEWED BY: R. C. Mandel 1-13-98	JEFFREY J. EMBRICK RCE 40667 DATE 3-17-99	APPROVED: Gerald McKenny 2-9-98 CITY ENGINEER	SURVEY: DATE: JAN. 1998
TELEPHONE SYSTEM REVIEWED BY: C. D. [Signature] 1-17-98	REVISIONS	DATE DESCRIPTION	SHEET 3 OF 6 SHEETS
CABLE/TELEVISION SYSTEM REVIEWED BY: C. D. [Signature] 1-15-98	APPROVED RCE CITY	PARCEL MAP SLO 97-081	REFERENCES:
		DRIVEWAY PLAN AND PROFILE	UTILITIES ENGINEER: [Signature]



- GENERAL GRADING NOTES:**
1. Contractor shall be responsible for all items shown on all sheets of the plans.
 2. All construction work and installation shall conform to the latest version of the Standard Improvement Specifications and Drawings of San Luis Obispo City Engineering Department and all work shall be subject to the approval of the City Engineering Department and the Engineer of Record.
 3. No construction shall be started without plans approved by the City Engineering Department. The City Engineer shall be notified at least 24 hours prior to starting construction. Any construction done without approved plans or prior notification to the City Engineer will be rejected and will be done at the Contractor's and/or Owner's risk and expense.
 4. The City inspector, acting on behalf of the City Engineer, may require revisions in the plans to solve unforeseen problems that may arise in the field. All revisions shall be subject to the approval of the developer's engineer.
 5. An inspection agreement with the City of San Luis Obispo is required prior to the start of construction.
 6. The Contractor shall follow all applicable industrial safety regulations. The City of San Luis Obispo and its officials, the Engineer, and the Owner shall not be responsible for enforcing safety regulations.
 7. The Contractor is responsible for the protection or proper resetting of all existing monuments and other survey markers. Any survey monuments destroyed by the Contractor shall be replaced in accordance with the State Land Surveyor's Act at the Contractor's own expense.
 8. It shall be the responsibility of the Contractor to contact "Underground Service Alert" at 1-800-642-2444 for location of power, gas, oil, and telephone underground facilities. Contractor will also be responsible for contacting the appropriate agency for the location of all underground facilities.
 9. The contractor shall probe and verify all existing utility locations and elevations prior to commencement of work in that area. Notify Engineering Department of any discrepancies prior to work.
 10. These plans do not authorize site disturbance beyond the limits of grading shown. Obtain necessary permits to grade elsewhere.
 11. Obtain permission to enter upon adjoining property to construct improvements or to grade prior to construction. The City Engineer does not authorize entry per these approved plans.
 12. Any deviation from these plans without prior approval from the design engineer shall be at the Contractor's own risk and expense.
 13. All grading shall be conducted in accordance with Chapter 70 of the U.L.C. and City Grading Ordinance and the recommendations of the soils report prepared by GeoSolutions, LLC, August 1997.
 14. No grading shall occur within 0.6 meters of the property lines except as necessary to improve existing conditions.
 15. The Contractor shall provide dust control during all phases of the work.
 16. Owner shall contract with a certified soils engineer for inspection and compaction testing during rough and finish grading operations.
 17. Material to be used as back fill or embankment shall be approved by the soils engineer and be free of objectional material such as trees, stumps, roots, logs or otherwise deleterious material.
 18. Subgrade material shall be compacted to a relative compaction of 95% in the zone between finished subgrade elevation and one foot below. All material in fill sections below the zone mentioned above shall be compacted to 90% relative compaction.
 19. Soils tests shall be done in accordance with the County Standards and Specifications Section 11-351.1403 and 11-351.1404. All tests must be made within 15 days prior to placing material. The test results shall clearly indicate the location and source of the material.
 20. Provide erosion control planting for all fresh cut and fill slopes and on all disturbed surfaces other than paved or gravel surfaces. Permanent vegetation shall be established prior to final inspection.
 21. Grading plans for all lots will be prepared for each lot during permit process.
 22. Contractor shall be responsible for the placement and maintenance of all erosion control devices as specified by the Engineer of work. These devices shall be in place or be ready to place from October 15 to April 15. In the event that the devices are not permanently placed they shall be placed in the event a forecast for rain exceeds 30%. An emergency crew shall be available 24 hrs a day in the event an erosion problem should occur. A responsible person and his phone number shall be named here upon.



SYMBOL LEGEND:	ABBREVIATIONS:	LINETYPE LEGEND:
VALVE	ASPHALT CONCRETE	WATER LINE
METERS BOX	CORRUGATED METAL PIPE	STORM DRAIN
UTILITY POLE	CONCRETE	SEWER
STREET LAMPS	DROP INLET	EXG SEWER
SLOPE BREAK	ELECTRIC	EXIST STORM DRAIN
	EXISTING	EXIST GAS
	FINISHED GRADE	FLOWLINE (& DIR)
	FINISHED SURFACE	FS
	FLOWLINE	FL
	HIGH PRESSURE	HP
	MAXIMUM	MAX
	MINIMUM	MIN
	POWER POLE	PP
	STORM DRAIN	SD
	TELEPHONE	TEL
	TO BE REMOVED	TBR
	TYPICAL	TYP
	WATERLINE	WL
	ELECTRIC, TELEPHONE, CABLE	ETC
	EXIST CONTOUR	WS
		BOUNDARY
		LOT LINE

RECORD DRAWING

JEFFREY J. EMRICK RCE 40567 EXP. DATE

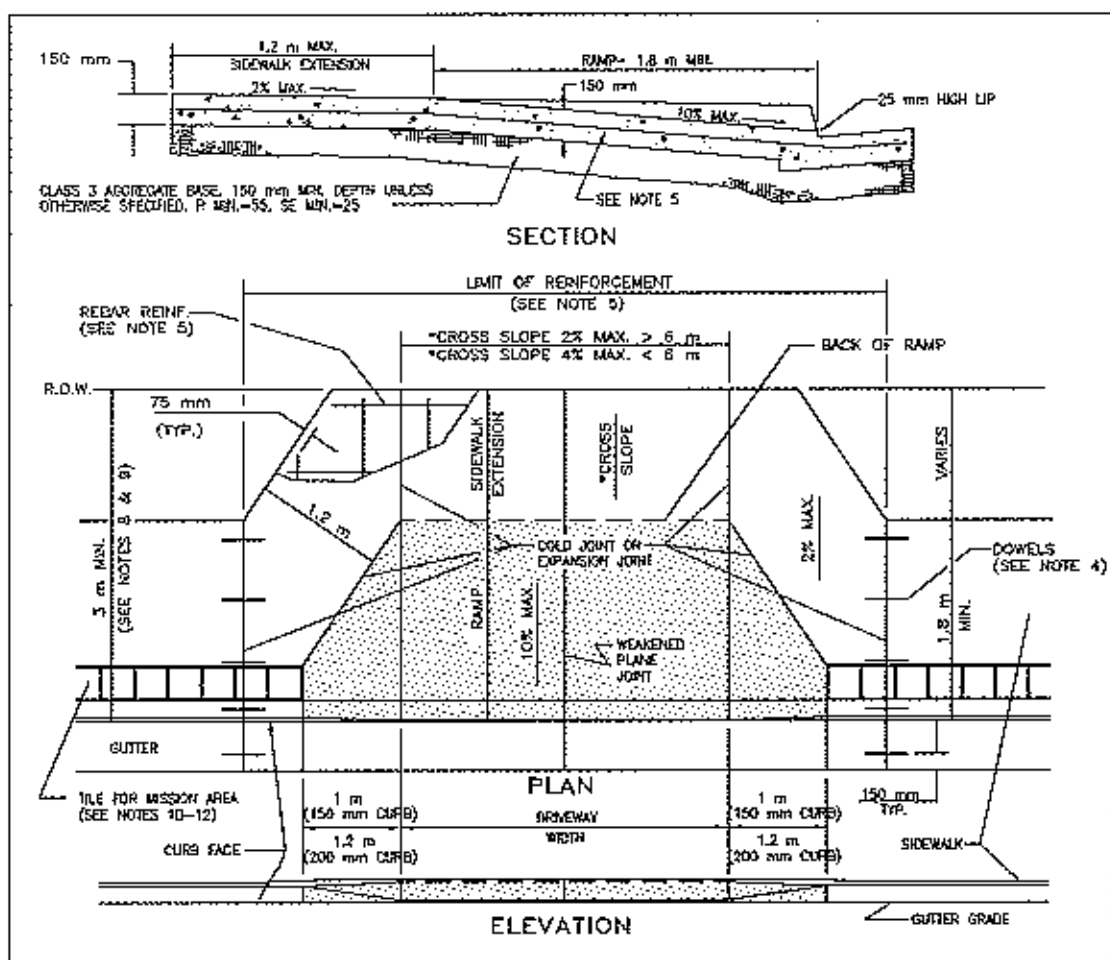
THESE DRAWINGS ARE BASED ON INFORMATION SUPPLIED BY OTHERS WITHOUT VERIFICATION BY ENGINEERING DEVELOPMENT ASSOCIATES. NO RESPONSIBILITY IS ASSUMED BY ENGINEERING DEVELOPMENT ASSOCIATES FOR THE ACCURACY OR COMPLETENESS OF THIS INFORMATION.



NOTICE

APPROVAL BY THE CITY DOES NOT GUARANTEE ACCURACY NOR COMPLETENESS OF THESE PLANS. IT DOES AUTHORIZE THE OWNER TO BUILD THE PROJECT HEREON. IT SHALL BE THE RESPONSIBILITY OF THE OWNER AND ENGINEER OF RECORD TO CORRECT ANY DEFICIENCIES THAT APPEAR AND ENGINEERING STANDARDS SHALL BE FOLLOWED UNLESS THEY ARE SPECIFICALLY WAIVED OR MODIFIED BY NOTES ON THE PLANS. THE ENGINEER OF RECORD SHALL PROVIDE REPRODUCIBLE "AS BUILT" PLANS AND 3 SETS OF MICROFORMS TO THE CITY PRIOR TO THE PROJECT BEING ACCEPTED BY THE CITY.

ELECTRICAL SYSTEM REVIEWED BY: <i>Kla for J. DeGaetano</i> 1-15-98	ENGINEERING DEVELOPMENT ASSOCIATES 1820 NIPOMO STREET SAN LUIS OBISPO, CALIFORNIA 93401 PH. (805) 548-8656 FAX (805) 549-8704	CITY OF SAN LUIS OBISPO DEPARTMENT OF PUBLIC WORKS	DESIGNER: SURVEY:
GAS SYSTEM REVIEWED BY: <i>R.C. Marcell</i> 1-15-98	<i>Jeffrey J. Emrick</i> 1-15-98 DATE	SCALE: 1:200 HORIZ APPROVED: <i>Donald McKeown</i> 2-9-98 CITY ENGINEER DATE	DATE: JAN. 1998 SHEET: 4 OF 6 SHEETS
TELEPHONE SYSTEM REVIEWED BY: <i>Darryl Brown</i> 1-15-98	REVISIONS DATE DESCRIPTION APPROVED RCE CITY	PARCEL MAP SLO 97 -081 GRADING PLAN	REFERENCES: UTILITIES ENGINEER: <i>Whelan</i>
CABLE TELEVISION SYSTEM REVIEWED BY: <i>C. Oude</i> 1-15-98	DATE DESCRIPTION APPROVED RCE CITY	Exp. 6-30-00	EDA JOB NUMBER: 22131000 DWG: R:\OPROJ\22131000\21310M.DWG PLOT DATE: 1/12/98

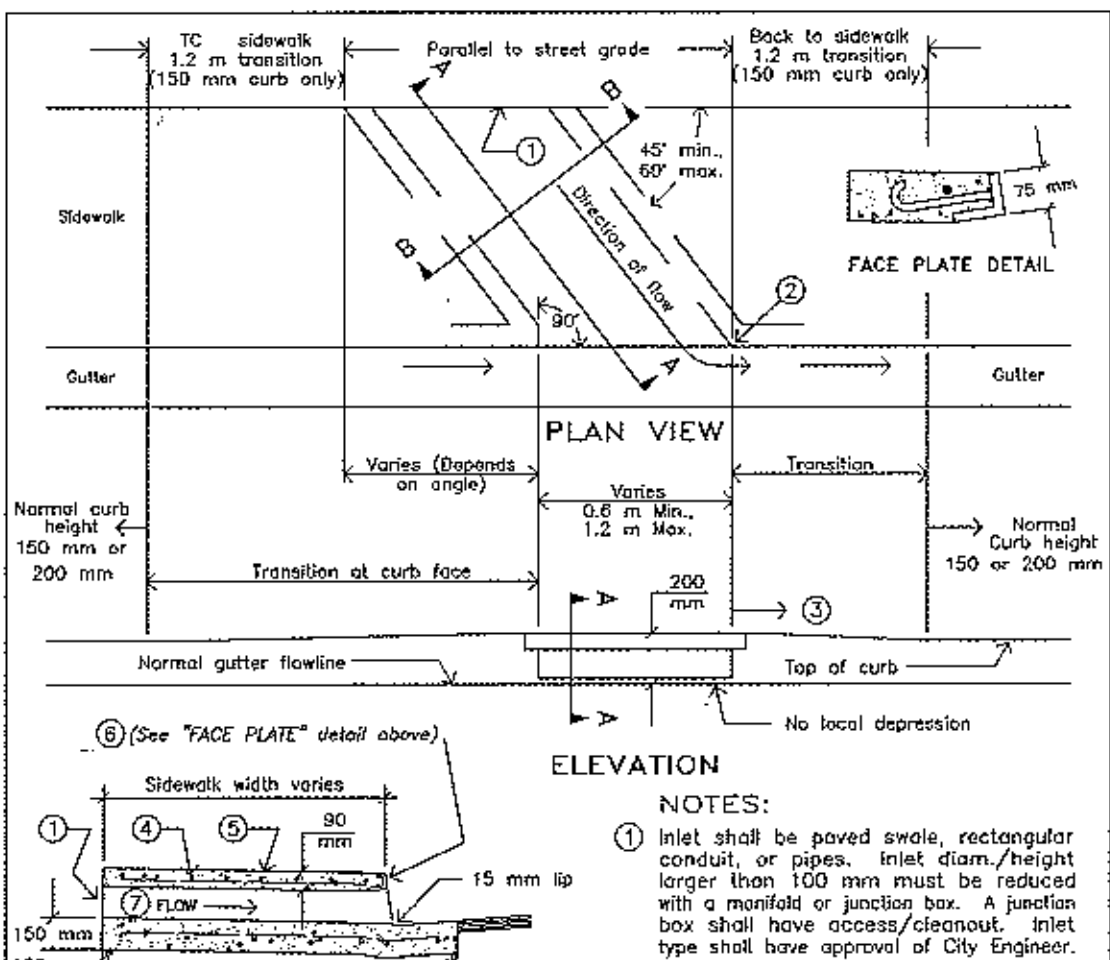


DRIVEWAY RAMP STANDARD

APPROVED BY CITY ENGINEER: [Signature] DATE: [Date]

REVISIONS	BY	APP	DATE
1	JDL	RAP	10-97
2	JDL	RAP	9-98

Change Note 7

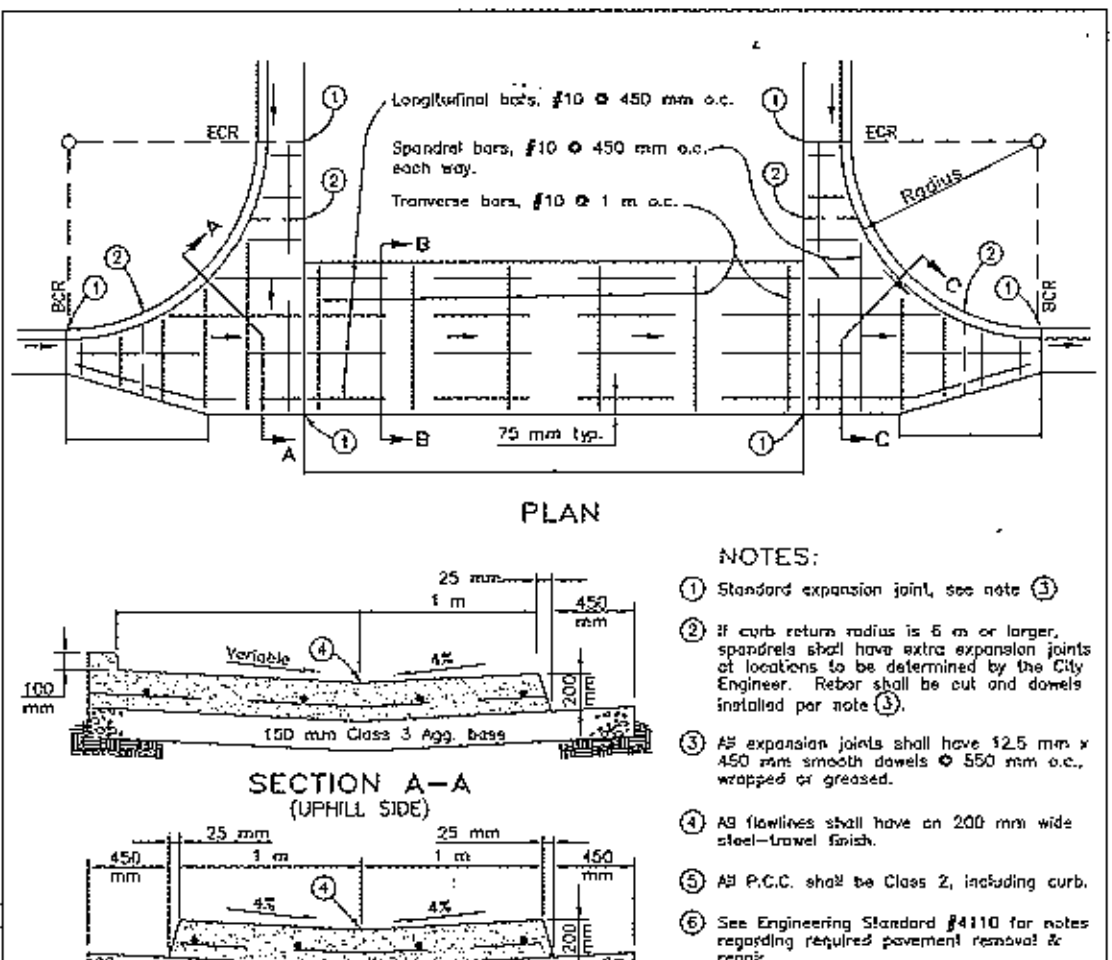


SIDEWALK UNDERDRAIN CONCRETE

APPROVED BY CITY ENGINEER: [Signature] DATE: [Date]

REVISIONS	BY	APP	DATE
1	JDL	RAP	12-96
2	JDL	RAP	9-98

Change Note 8

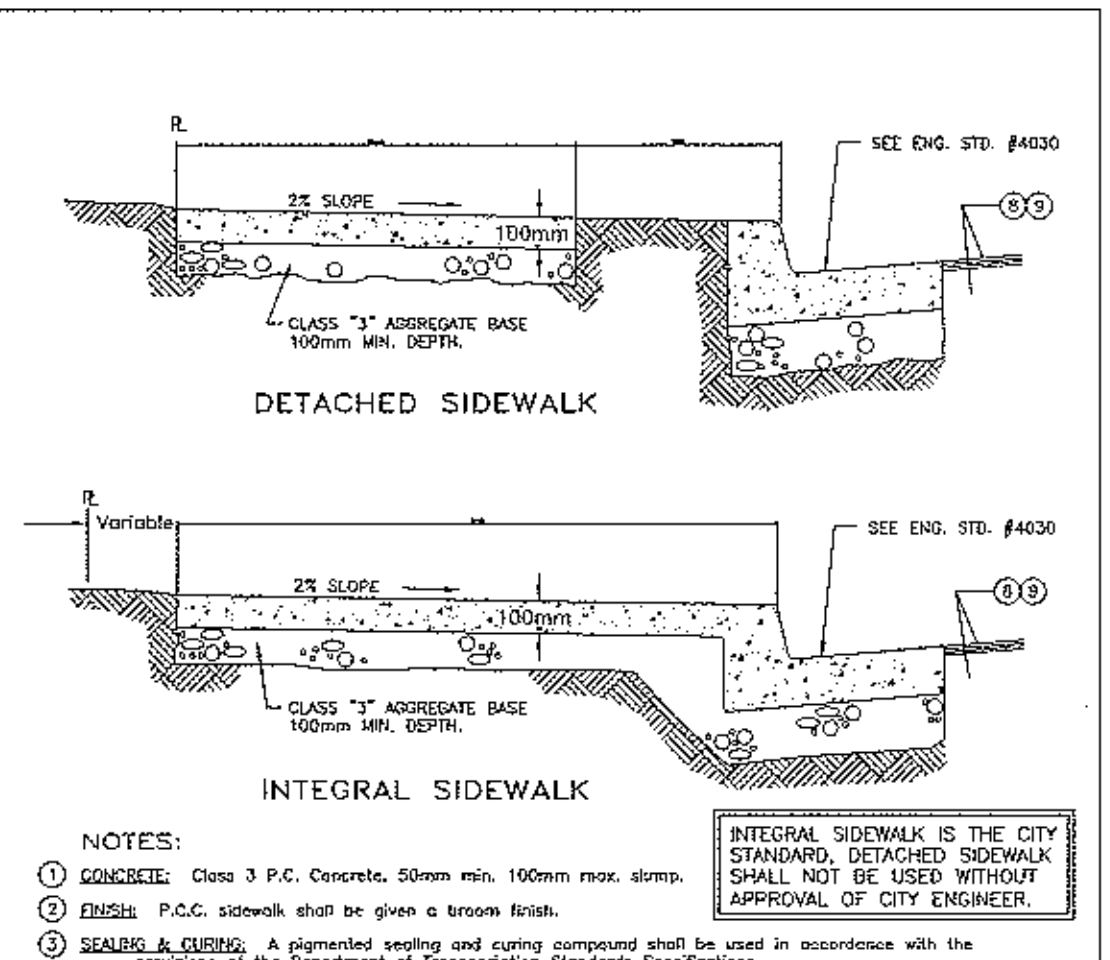


CROSS GUTTER

APPROVED BY CITY ENGINEER: [Signature] DATE: [Date]

REVISIONS	BY	APP	DATE
1	JDL	RAP	8-98
2	JDL	RAP	9-98

Change Note 6

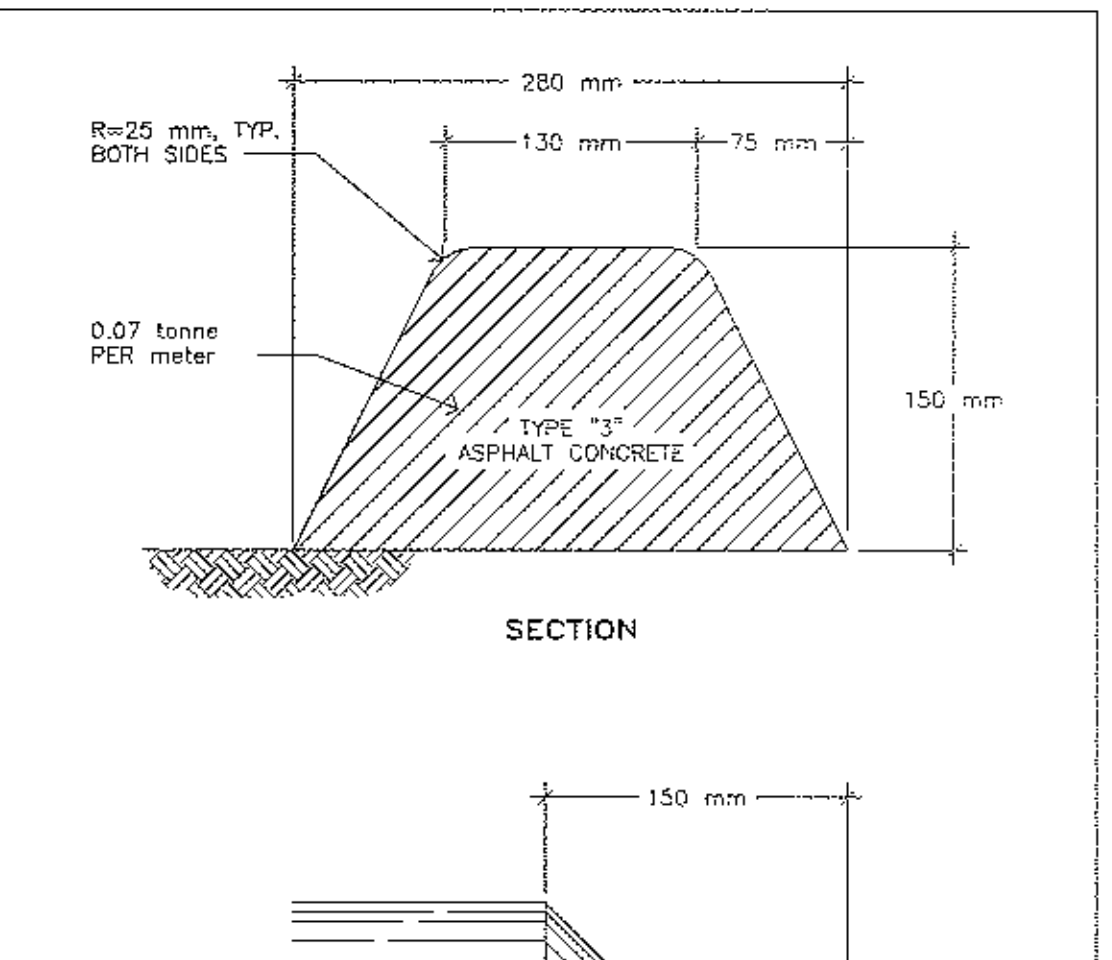


SIDEWALK INTEGRAL & DETACHED

APPROVED BY CITY ENGINEER: [Signature] DATE: [Date]

REVISIONS	BY	APP	DATE
1	JDL	RAP	7-98
2	JDL	RAP	9-98

Change Note 8

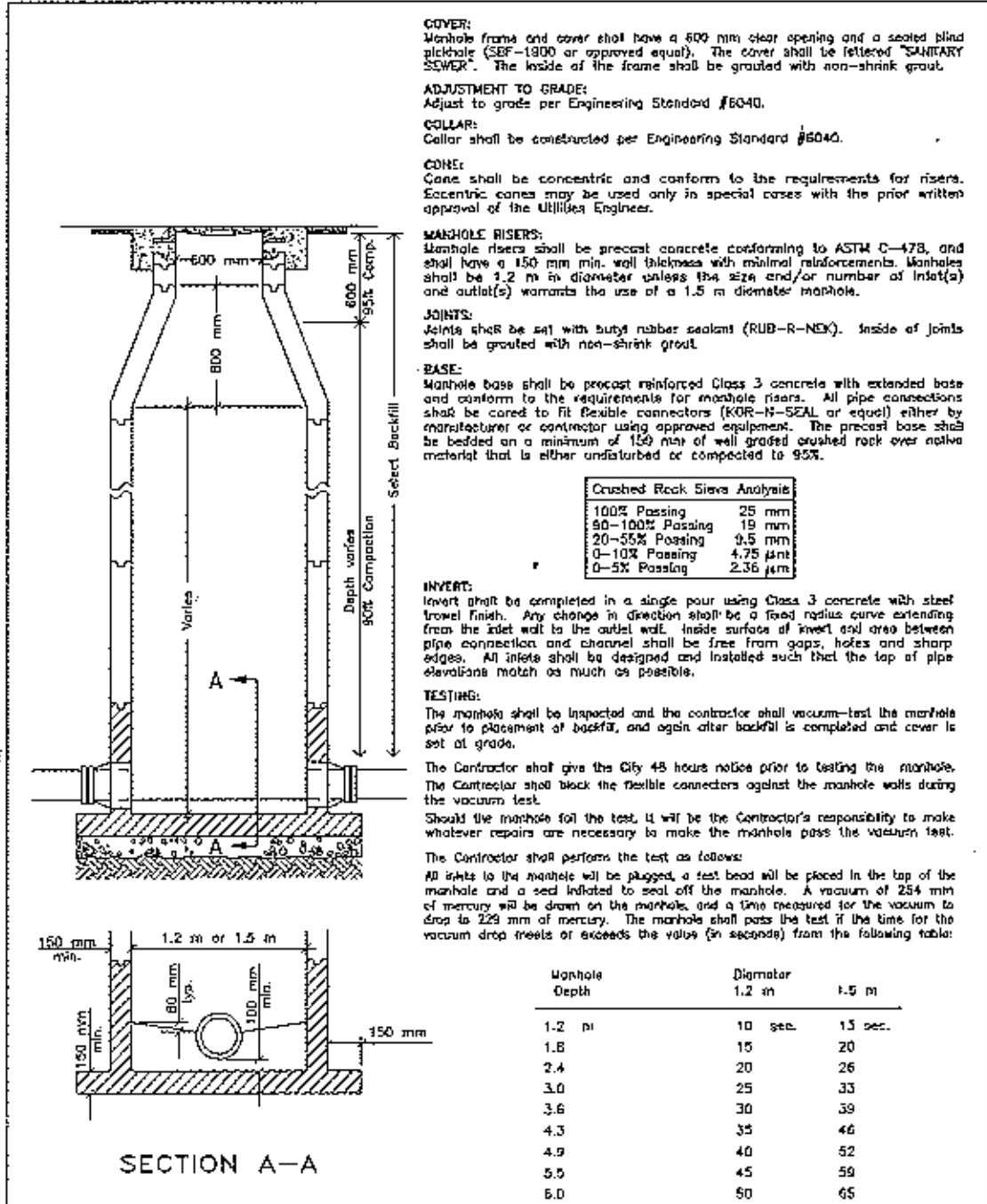


ASPHALT BERM 150 mm

APPROVED BY CITY ENGINEER: [Signature] DATE: [Date]

REVISIONS	BY	APP	DATE
1	JDL	RAP	10-98

Change Note 7

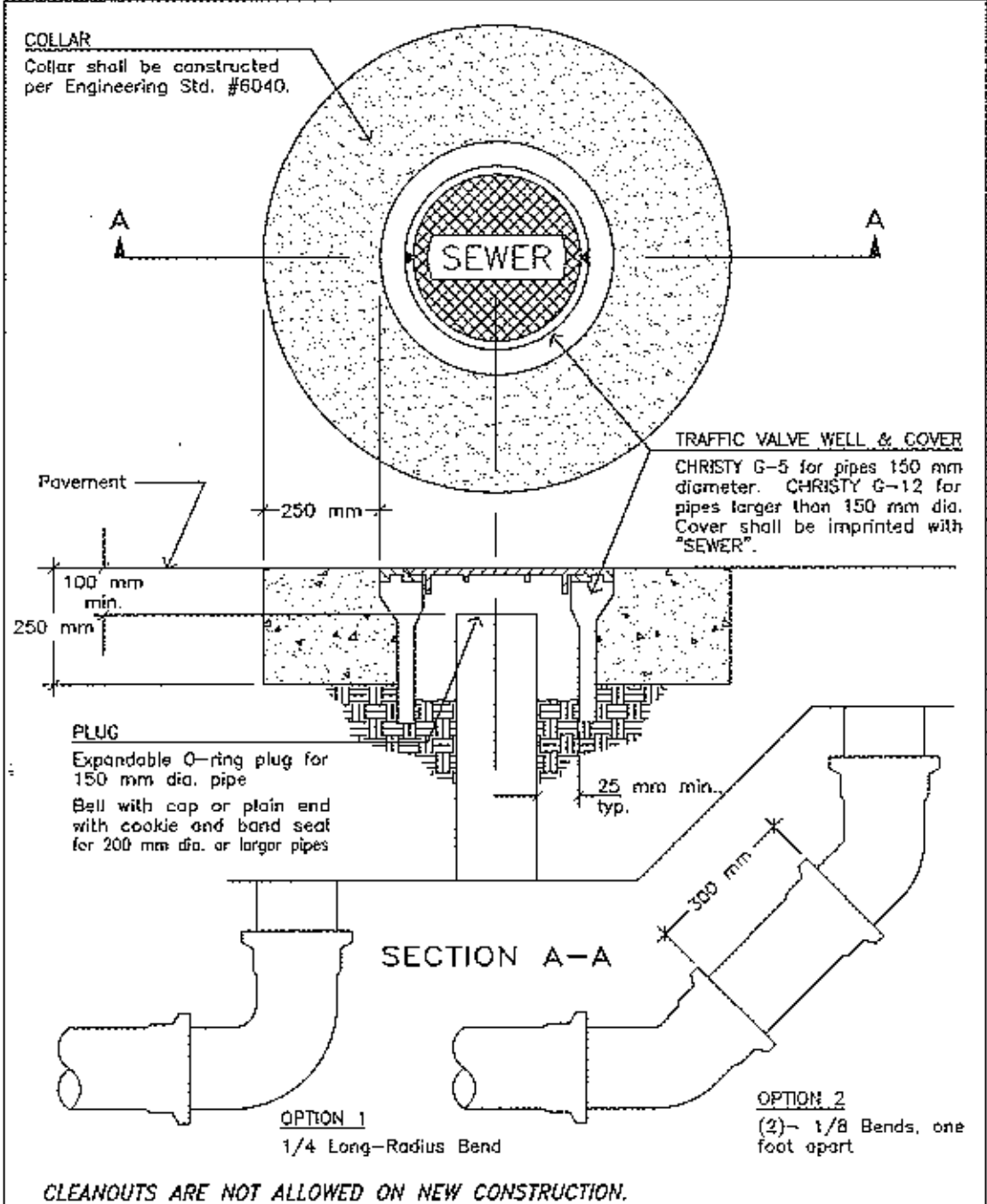


SEWER MANHOLE

APPROVED BY CITY ENGINEER: [Signature] DATE: [Date]

REVISIONS	BY	APP	DATE
1	JDL	RAP	10-98

Change Note 7

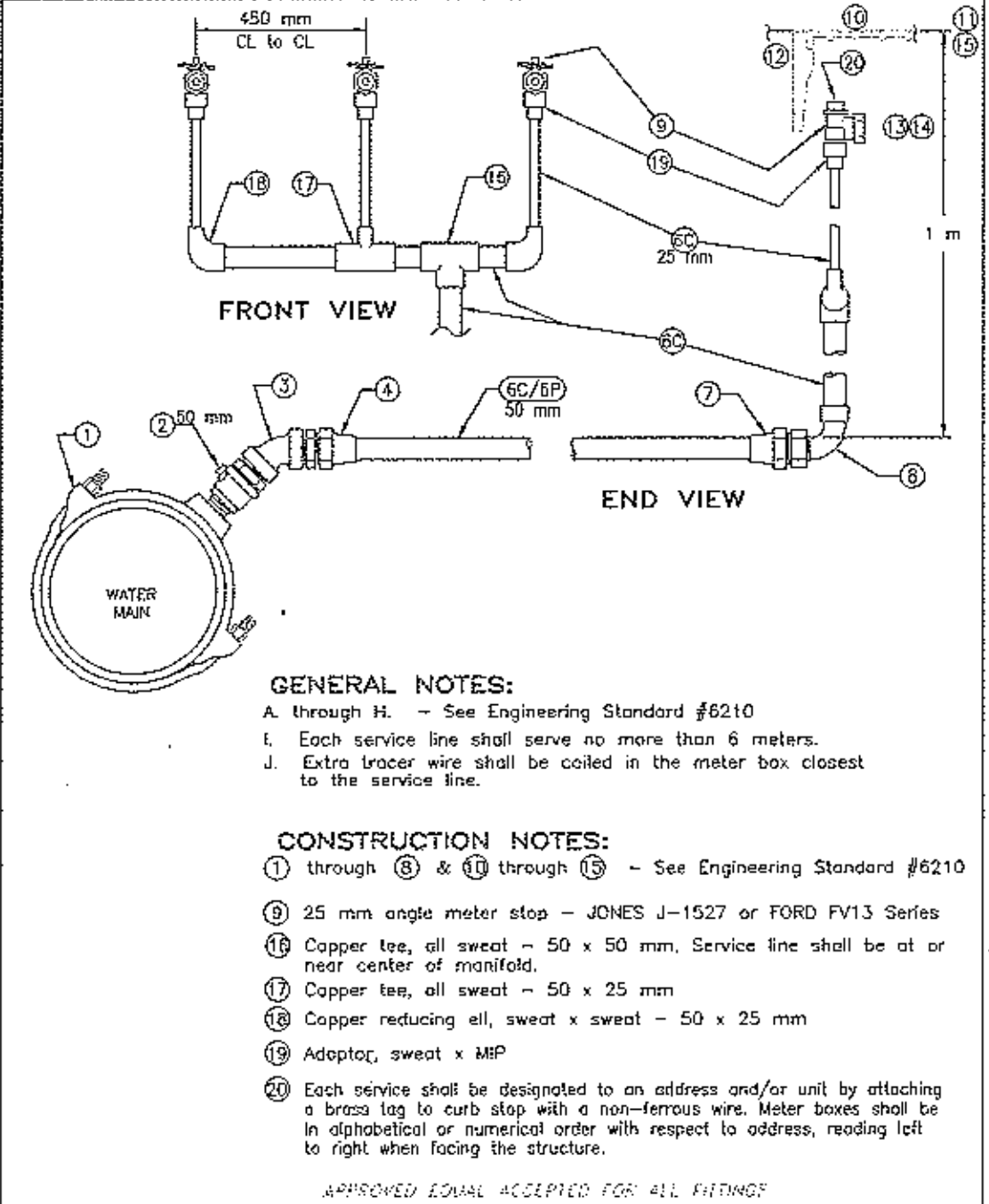


SEWER CLEANOUT & WELL

APPROVED BY CITY ENGINEER: [Signature] DATE: [Date]

REVISIONS	BY	APP	DATE
1	JDL	RAP	9-98

Change Note 7

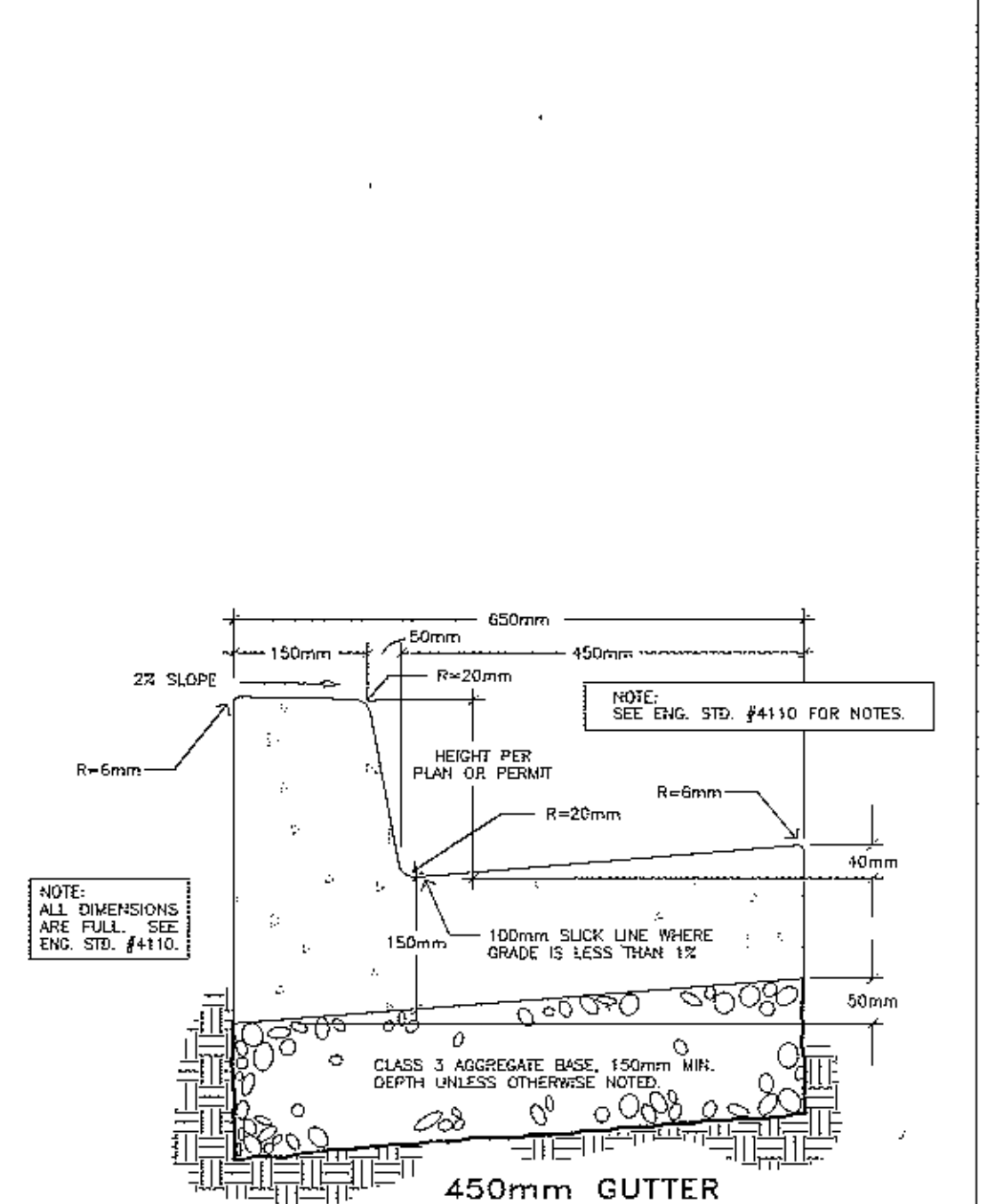


MANIFOLD MULTIPLE WATER SERVICES

APPROVED BY CITY ENGINEER: [Signature] DATE: [Date]

REVISIONS	BY	APP	DATE
1	JDL	RAP	10-98

Change Note 6

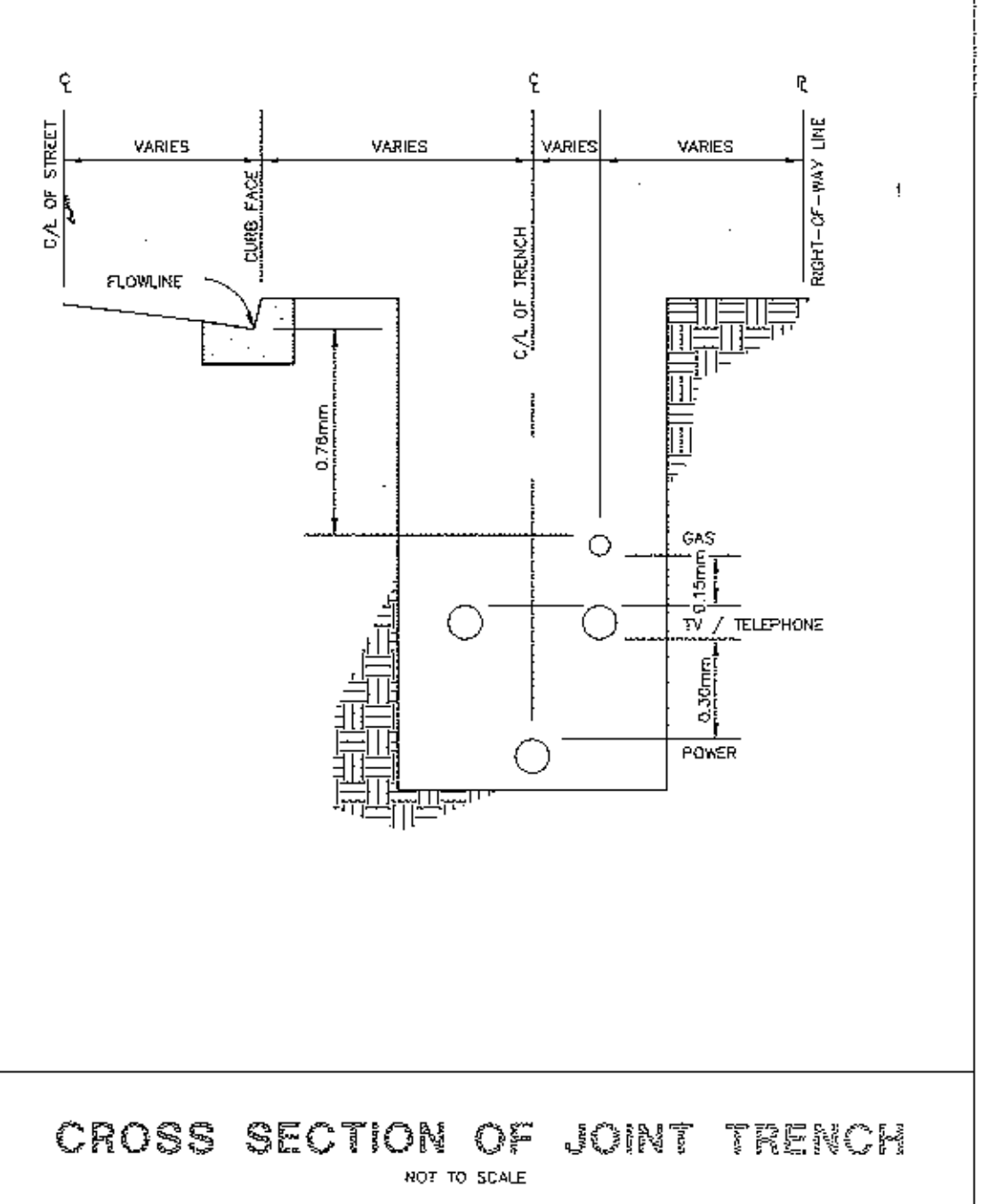


450mm GUTTER

APPROVED BY CITY ENGINEER: [Signature] DATE: [Date]

REVISIONS	BY	APP	DATE
1	JDL	RAP	7-98

Change Note 8



CROSS SECTION OF JOINT TRENCH

APPROVED BY CITY ENGINEER: [Signature] DATE: [Date]

REVISIONS	BY	APP	DATE
1	JDL	RAP	7-98

Change Note 8

RECORD DRAWING

JEFFREY J. EMRICK NCE 40857 EXP. 3-99 DATE

THESE DRAWINGS ARE BASED ON INFORMATION SUPPLIED BY OTHERS WITHOUT VERIFICATION BY ENGINEERING DEVELOPMENT ASSOCIATES. NO RESPONSIBILITY IS ASSUMED BY ENGINEERING DEVELOPMENT ASSOCIATES FOR THE ACCURACY OR COMPLETENESS OF THIS INFORMATION.

RECORD DRAWING

JEFFREY J. EMRICK NCE 40857 EXP. 3-99 DATE

THESE DRAWINGS ARE BASED ON INFORMATION SUPPLIED BY OTHERS WITHOUT VERIFICATION BY ENGINEERING DEVELOPMENT ASSOCIATES. NO RESPONSIBILITY IS ASSUMED BY ENGINEERING DEVELOPMENT ASSOCIATES FOR THE ACCURACY OR COMPLETENESS OF THIS INFORMATION.

RECORD DRAWING

JEFFREY J. EMRICK NCE 40857 EXP. 3-99 DATE

THESE DRAWINGS ARE BASED ON INFORMATION SUPPLIED BY OTHERS WITHOUT VERIFICATION BY ENGINEERING DEVELOPMENT ASSOCIATES. NO RESPONSIBILITY IS ASSUMED BY ENGINEERING DEVELOPMENT ASSOCIATES FOR THE ACCURACY OR COMPLETENESS OF THIS INFORMATION.

RECORD DRAWING

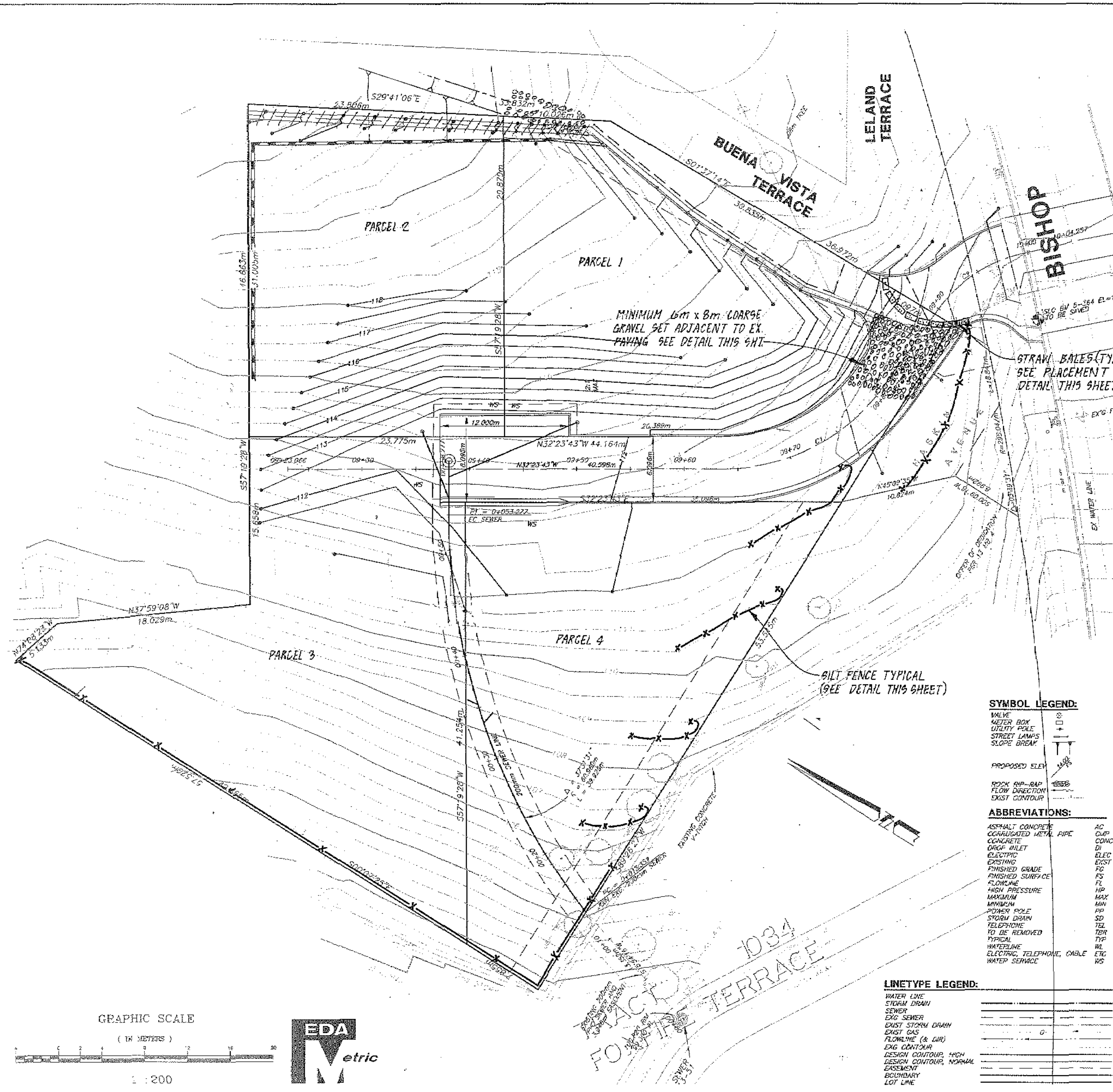
JEFFREY J. EMRICK NCE 40857 EXP. 3-99 DATE

THESE DRAWINGS ARE BASED ON INFORMATION SUPPLIED BY OTHERS WITHOUT VERIFICATION BY ENGINEERING DEVELOPMENT ASSOCIATES. NO RESPONSIBILITY IS ASSUMED BY ENGINEERING DEVELOPMENT ASSOCIATES FOR THE ACCURACY OR COMPLETENESS OF THIS INFORMATION.

RECORD DRAWING

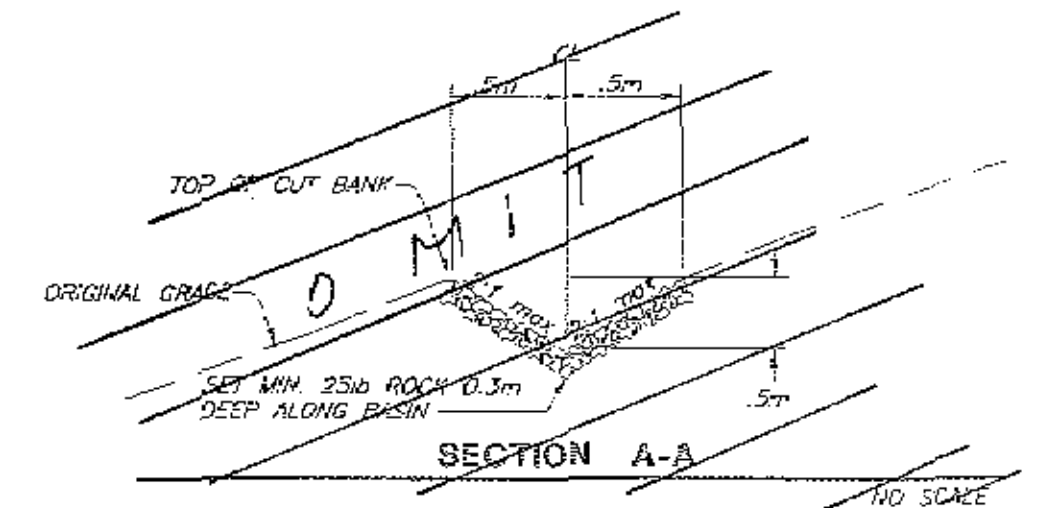
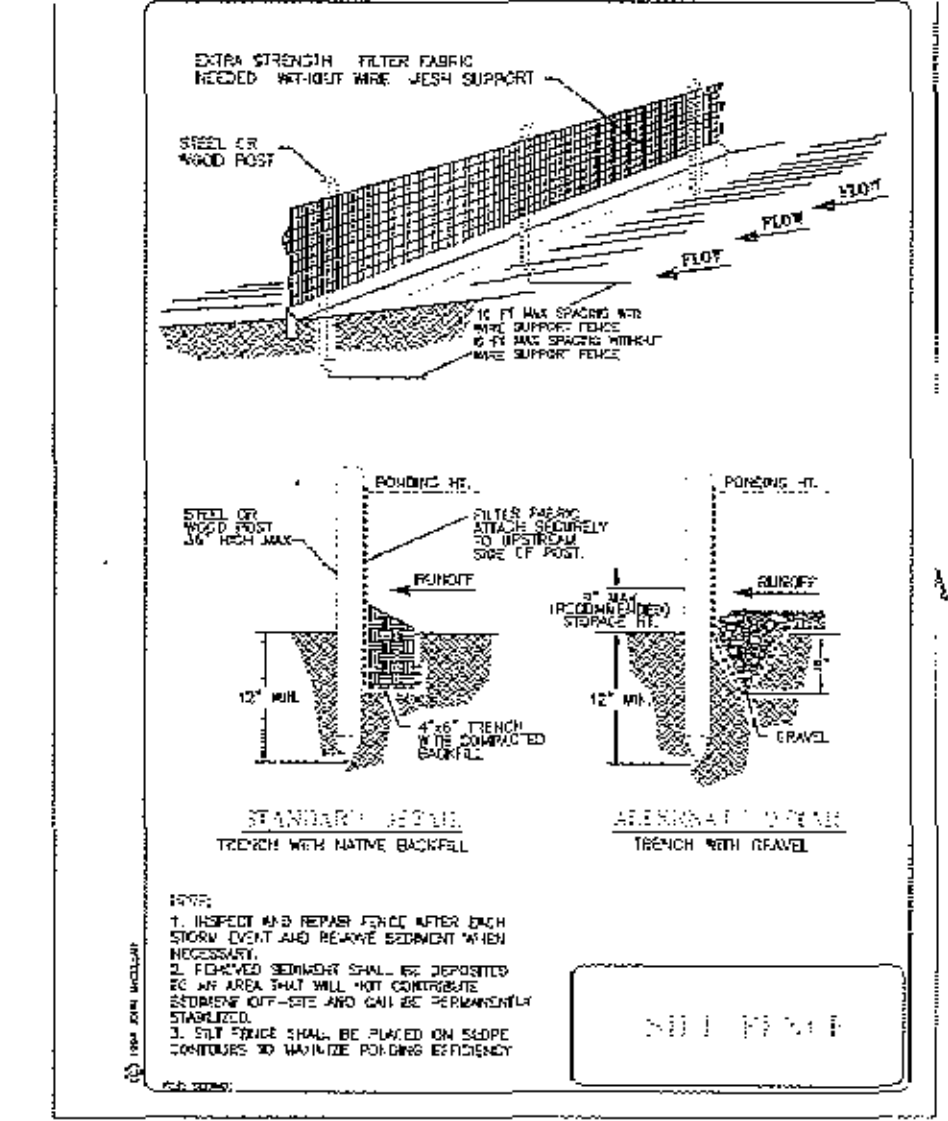
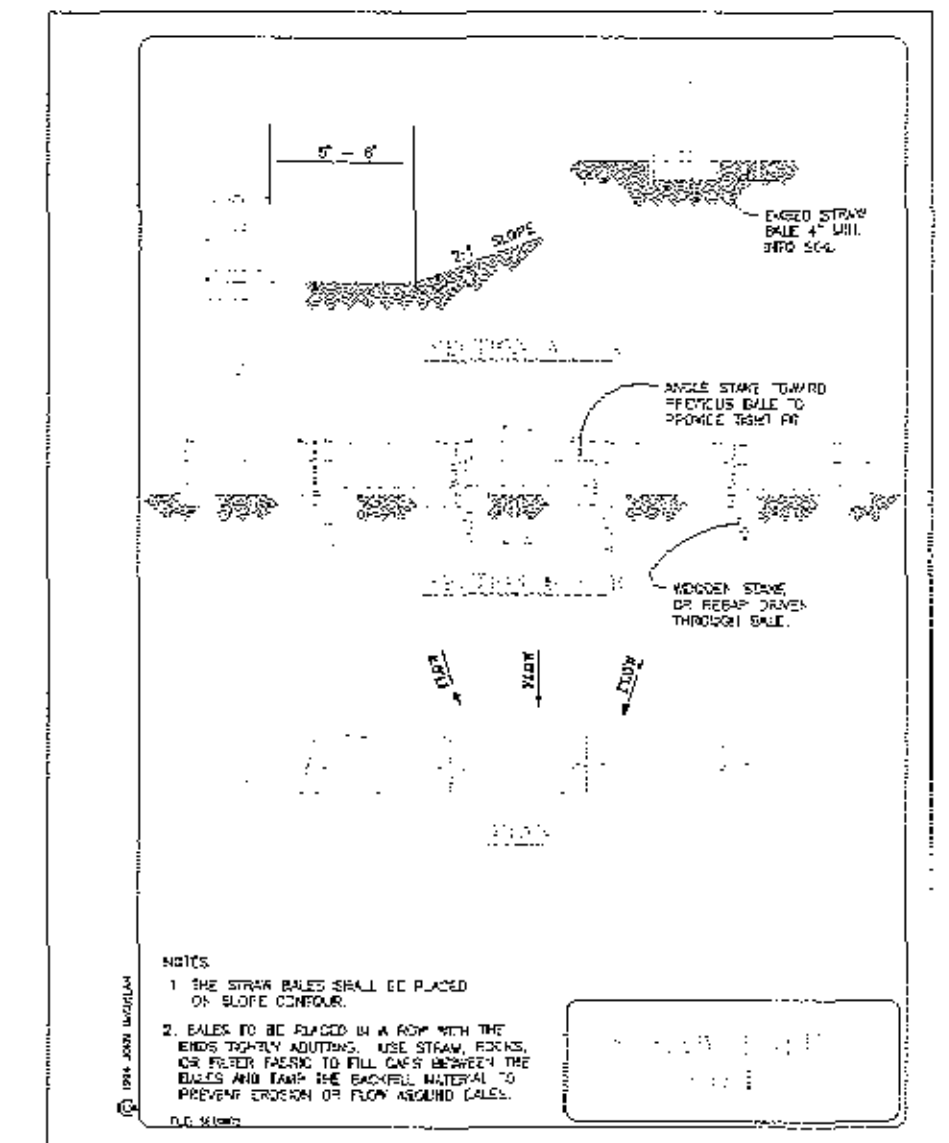
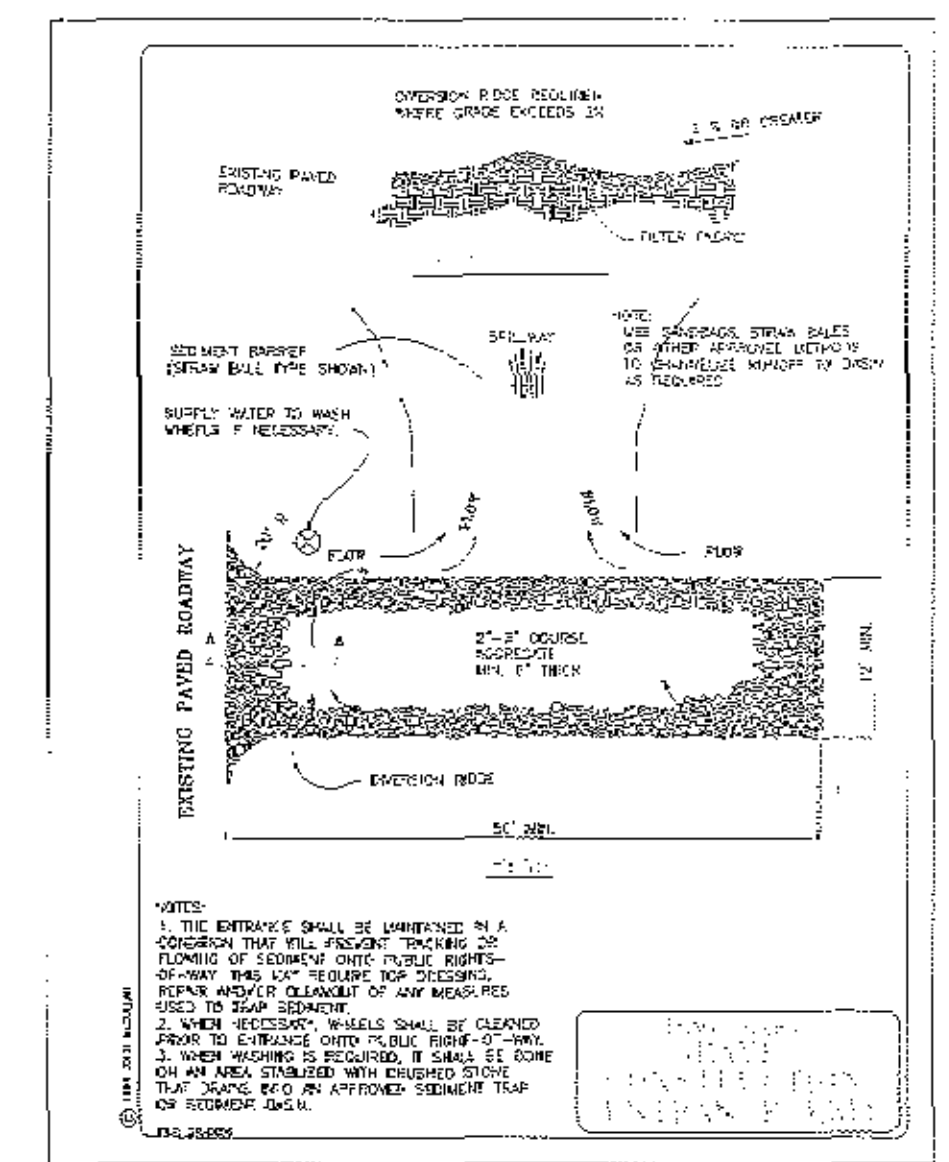
JEFFREY J. EMRICK NCE 40857 EXP. 3-99 DATE

THESE DRAWINGS ARE BASED ON INFORMATION SUPPLIED BY OTHERS WITHOUT VERIFICATION BY ENGINEERING DEVELOPMENT ASSOCIATES. NO RESPONSIBILITY IS ASSUMED BY ENGINEERING DEVELOPMENT ASSOCIATES FOR THE ACCURACY OR COMPLETENESS OF THIS INFORMATION.



EROSION CONTROL GENERAL NOTES:

- THIS STORM WATER POLLUTION PREVENTION PLAN (SWPPP) WAS DEVELOPED AT THE REQUEST OF THE CONTRACTOR, BARRY CAMP FOR HIS CONSTRUCTION SITE AT 1034 BISHOP STREET SAN LUIS OBISPO COUNTY OF SAN LUIS OBISPO, STATE OF CALIFORNIA.
- THIS PLAN IDENTIFIES POTENTIAL SOURCES OF POLLUTANTS OF STORM WATER PREVENTS POLLUTION CONTROL MEASURES AND ASSISTS IN ENSURING IMPLEMENTATION AND MAINTENANCE OF THE BEST MANAGEMENT PRACTICES (BMP'S) INDICATED HEREIN.
- EROSION AND STORMWATER POLLUTION CONTROL MEASURES SHOWN ON THIS PLAN SHALL BE IMPLEMENTED BY THE CONTRACTOR AS NEEDED TO PREVENT EROSION DEBRIS AND/OR POLLUTION FROM LEAVING THE CONSTRUCTION SITE. EROSION CONTROL REQUIREMENTS ARE IN EFFECT BETWEEN OCTOBER 1 AND APRIL 15.
- IN THE EVENT OF A CHANGE IN OWNERSHIP, A NEW NOTICE OF INTENT SHALL BE FILED WITH THE STATE WATER RESOURCES CONTROL BOARD.
- IN THE EVENT OF A RELEASE OF A REPORTABLE QUANTITY OF A POLLUTANT, THE CONTRACTOR SHALL ADVISE THE OWNER TO NOTIFY THE NATIONAL RESPONSE CENTER AND THE COUNTY OF SAN LUIS OBISPO. IF NECESSARY, THIS POLLUTION PREVENTION PLAN SHOULD BE REVISED TO REFLECT THE CHANGE IN CONDITIONS OF THE CONSTRUCTION ACTIVITY. A REPORTABLE QUANTITY IS ESTABLISHED BY 40 CODE OF FEDERAL REGULATIONS (CFR) 117.3 OR 40 CFR 302.4.
- ALL CONTRACTORS AND THEIR PERSONNEL WHOSE WORK CAN CONTRIBUTE TO OR CAUSE POLLUTION OF STORM WATER SHOULD BE MADE FAMILIAR WITH THIS POLLUTION PREVENTION PLAN. ADEQUATE TRAINING FOR IMPLEMENTATION OF THE MEASURES PRESENTED HEREIN SHALL BE PROVIDED TO THE CONTRACTOR AND THEIR PERSONNEL.
- CHANGES IN CONSTRUCTION OR IN CONDITIONS WHICH ARE NOT COVERED BY THIS PLAN SHOULD BE BROUGHT TO THE ATTENTION OF THE CONTRACTOR, BARRY CAMP, 233 SHERBURN, IF NECESSARY, THIS POLLUTION PREVENTION PLAN.
- ALL PREVENTION AND CLEAN UP MEASURES SHOULD BE CONDUCTED IN ACCORDANCE WITH COUNTY OF SAN LUIS OBISPO ORDINANCES, AS WELL AS STATE AND FEDERAL REGULATIONS. WASTE MATERIALS SHOULD BE DISPOSED OF IN A LEGAL MANNER.
- ALL DISCHARGES OF STORM WATER MUST COMPLY WITH THE LAWFUL REQUIREMENTS OF THE COUNTY OF SAN LUIS OBISPO AND OTHER LOCAL AGENCIES REGARDING THE DISCHARGES OF STORM WATER TO STORM DRAIN SYSTEMS.
- THIS PLAN DOES NOT COVER THE REMOVAL OF HAZARDOUS OR TOXIC WASTE. IN THE EVENT OF A DISCHARGE OR RELEASE OF A REPORTABLE QUANTITY OF TOXIC WASTE, WORK SHOULD BE STOPPED UNTIL THE SPILL CAN BE ASSESSED AND A WASTEWATER REPORT PREPARED BY A QUALIFIED ENVIRONMENTAL CONSULTANT AND IF NECESSARY REVIEWED BY THE COUNTY OF SAN LUIS OBISPO AND ANY OTHER AGENCY HAVING JURISDICTION.
- THIS SWPPP SHALL BE MADE AVAILABLE TO THE PUBLIC UNDER SECTION 308(B) OF THE CLEAN WATER ACT. UPON REQUEST BY MEMBERS OF THE PUBLIC, THE DISCHARGER SHALL MAKE AVAILABLE FOR REVIEW A COPY OF THIS SWPPP EITHER TO THE REGIONAL WATER QUALITY BOARD OR DIRECTLY TO THE REQUESTER.
- THIS SWPPP MUST BE KEPT ON-SITE DURING CONSTRUCTION ACTIVITY AND MADE AVAILABLE UPON REQUEST OF A REPRESENTATIVE OF THE REGIONAL WATER QUALITY BOARD AND/OR THE LOCAL AGENCY.
- CONTRACTOR SHALL OBTAIN AN EXTENDED WEATHER REPORT PRIOR TO START OF GRADING WHICH INDICATES AT LEAST 5 DAYS OF NO RAIN TO THE SATISFACTION OF THE CITY ENGINEER.



SYMBOL LEGEND:

- VALVE
- METER BOX
- UTILITY POLE
- STREET LAMPS
- SLOPE BREAK
- PROPOSED ELEV
- ROCK RIP-RAP
- FLOW DIRECTION
- EXIST CONTOUR

ABBREVIATIONS:

- ASPHALT CONCRETE
- CORRUGATED METAL PIPE
- CONCRETE
- DRAIN INLET
- ELECTRIC
- EXISTING
- FINISHED GRADE
- FINISHED SURFACE
- FLOWLINE
- HIGH PRESSURE
- MAXIMUM
- MINIMUM
- POWER POLE
- STORM DRAIN
- TELEPHONE
- TO BE REMOVED
- TYPICAL
- WATERLINE
- ELECTRIC, TELEPHONE, CABLE
- WATER SERVICE

LINETYPE LEGEND:

- WATER LINE
- STORM DRAIN
- SEWER
- EXIST SEWER
- EXIST STORM DRAIN
- EXIST GAS
- FLOWLINE (& DIR)
- EXIST CONTOUR
- DESIGN CONTOUR, HIGH
- DESIGN CONTOUR, NORMAL
- EASEMENT
- BOUNDARY
- LOT LINE



ENGINEERING DEVELOPMENT ASSOCIATES
1320 NIPOMO STREET
SAN LUIS OBISPO, CALIFORNIA 93401
TEL: 805-742-8050 FAX: 805-549-8704

DATE	DESCRIPTION	REVISIONS	DATE	APPROVED

CITY OF SAN LUIS OBISPO
DEPARTMENT OF PUBLIC WORKS

SCALE: 1:200 - HORIZ

APPROVED: *David T. Kearney* 2/6/98
CITY ENGINEER

DATE: FEB. 1998

DESIGNER: *Barick*

DATE: FEB. 1998

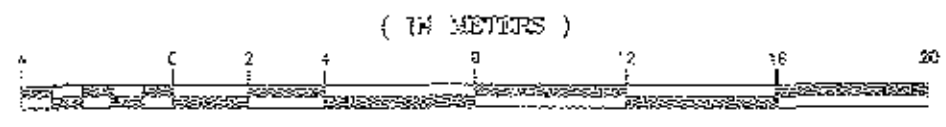
SHEET: 6 OF 6 SHEETS

REFERENCES:

DATE: 2/6/98

PROJECT: PARCEL MAP SLO 97-081
EROSION CONTROL PLAN

GRAPHIC SCALE



1:200

